

Technical Manual



JBL VT4880ADP-AN/CN/DA

SPECIFICATIONS

ACOUSTIC & ELECTRICAL SPECIFICATIONS:

- Nominal Impedance: 4 Ohms Each Transducer
- DP3 Internal Amplification Output (at load): 6900W Peak, 3500W Continuous
- DP3 Output Topology: 2-Channel Class-I
- Frequency Response: 29 Hz -120 Hz (± 3 dB)
- Frequency Range: 25 Hz -160 Hz (-10 dB)
- Maximum Peak Output¹: 143 dB SPL, 1m (2 π , half-space ground -based application)
137 dB SPL, 1m (4 π , free-field, suspended application)
- Signal Processing: dbx Type IV Conversion System, precision bandpass filters, limiting, pre-equalization filters and automatic self-test functions
- AC Power Operating Range: Auto Select 90-132VAC 50/60 Hz
- AC Input Connector: Neutrik PowerCon (NAC3MPA)
- AC Power Loop-thru: Neutrik PowerCon (NACMPB)
- AC Current Requirement: 15A per system at 120V, 7.5A per system at 240V
- Signal Input: F-XLR Active 20k Ohms Balanced, 10k Ohms Unbalanced

- Signal Loop-Through: M-XLR (passive pass-through)
- Controls: Precision 0.5 dB increment 16 dB input attenuator (DPIP only)

SYSTEM COMPONENTS:

- Cabinet: Enclosure Assembly C4880ADP
- Grille: 338792-001 (Foam Backed)
- Low Frequency Transducer: (2) 2269G, 457 mm (18 in) dia., 100 mm (4 in) Dual Coil, Differential Drive[®], Direct Cooled[™]
- DC Resistance: 2.7 ohms

AURAL SWEEP TEST SPECIFICATIONS:

- A. System Aural Sweep Test: .1V Input, 20 Hz to 400 Hz
- B. L.F. Aural Sweep Test: 10.0V Input, 10 Hz to 300 Hz

PHYSICAL SPECIFICATIONS:

- Enclosure Dimensions: 493mm x 1229mm x 1011mm D (19.4 x 48.4 x 39.8 in.D.)
- Shipping Weight: 257 lbs. (116.7 kg)

WARRANTY INFORMATION:

- Refer to Warranty Statement packed with each product.

PACKAGE

Warranty 59660
Users Guide 365427-001

Tray (2)
365146-001

Carton
365144-001

Filler, Top (2)
365145-001

Microfoam, PGK (8)
49790P

Operators Guide
360850-002
DBX Module, DP3

Protective Jackets (2)
(2 Drive Pack)
360849-001

Power Cord Assembly
355040-002
Edison/Shucko Pack

Includes:
355146-001 (120V) (1)
355147-001 (230V) (1)
Power Cords
NAC3FCB (Neutrik) (1)
Gray PowerCon

Amp Filler Long (2)
365348-001

Amp Filler Short (2)
365349-001

Front Filler
365426-001

JBL VT4889-AF
Carton
990-00233-00

Filler (2)
991-00258-00

Specification Sheet
336890-001

JBL VT4889-SF
Carton
990-00232-00

Filler (2)
337616-001

Specification Sheet
336890-001

VT4880ADP-ACC

Soft Cover
365109-001

Dolly Assembly
339150-002

Carton
365239-001

Filler, Lower
365240-001

Filler, Upper
365241-001

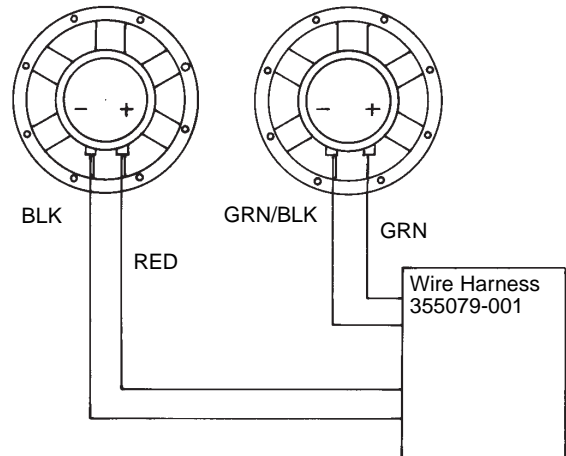
Installation Procedure
365242-001



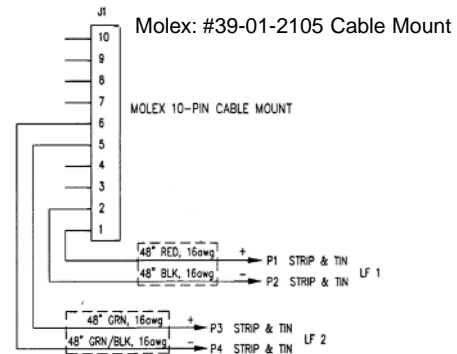
WIRING DIAGRAM

Driver, Low Freq (2)
2269G
(354096-003X)

Cone Repl
C4R2269

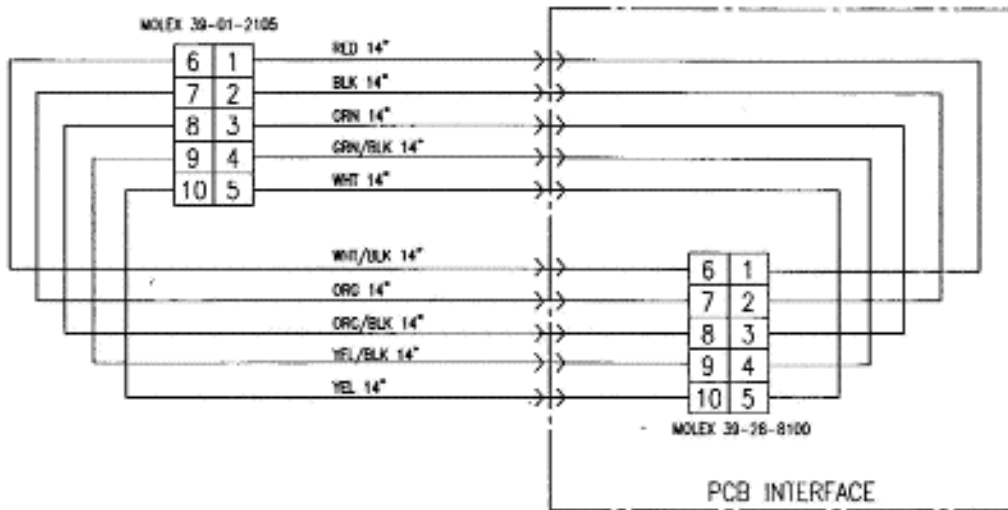


WIRE HARNESS SCHEMATIC 355079-001



JBL VT4880ADP-AN/CN/DA

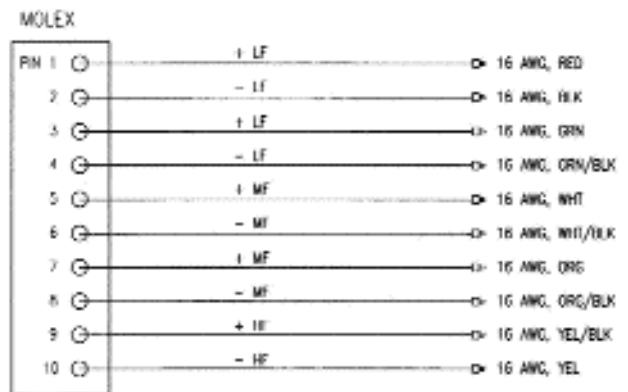
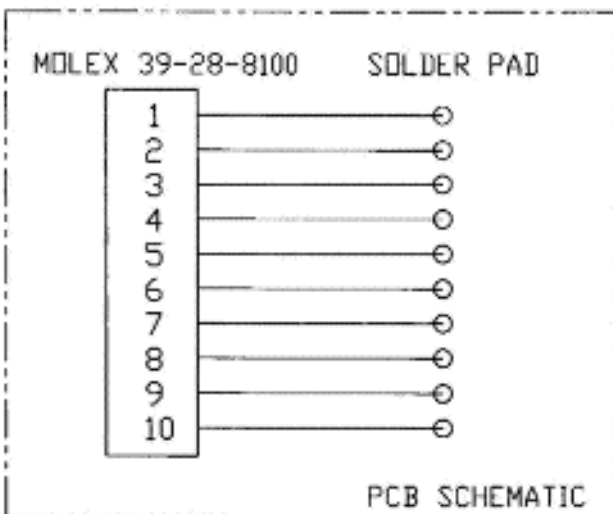
INPUT CUP ASSEMBLY SCHEMATIC



6	—————	SCREW MOUNT CABLE TIE*
5	-----	#6 X 3/8", TAP SCREW, PAN ,PH, BLK
4	352818-001	GASKET
3	352087-001	WIRE HARNESS (Ribbon Cable)
2	352270-001	PCB ASSY
1	352271-001	INPUT CUP

352270-001 Connector Assembly Diagram

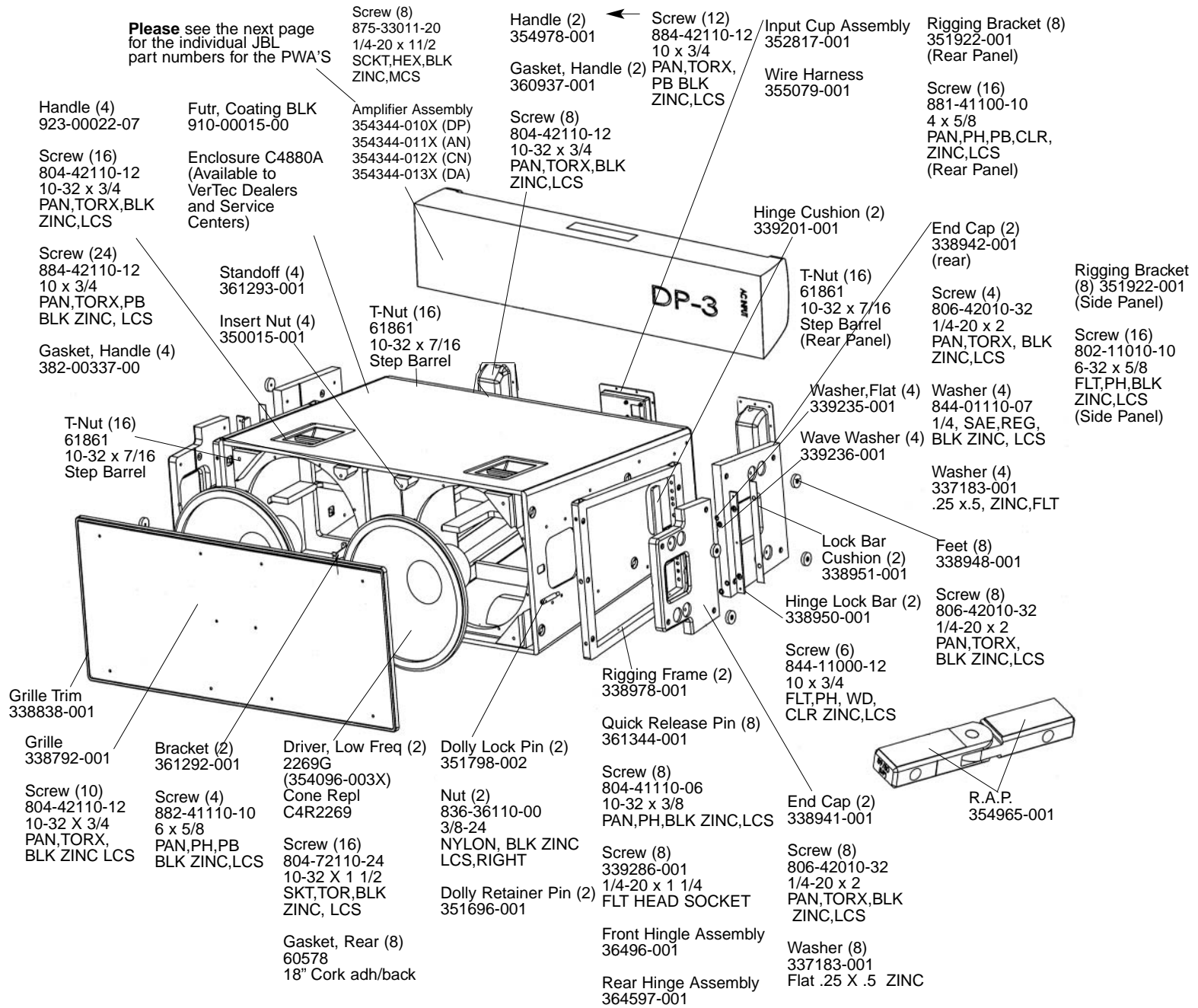
352087-001 Wire Harness Diagram



JBL VT4880ADP-AN/CN/DA

JBL VT4880ADP-AN/CN/DA

COMPONENT EXPLODED VIEW



JBL VT4880ADP-AN/CN/DA

DP3 AMPLIFIER ASSEMBLY REFERENCE

AMPLIFIER ASSEMBLY 354344-001

Amplifier Assemblies

DP3

Note: Amplifier assembly includes the input module.

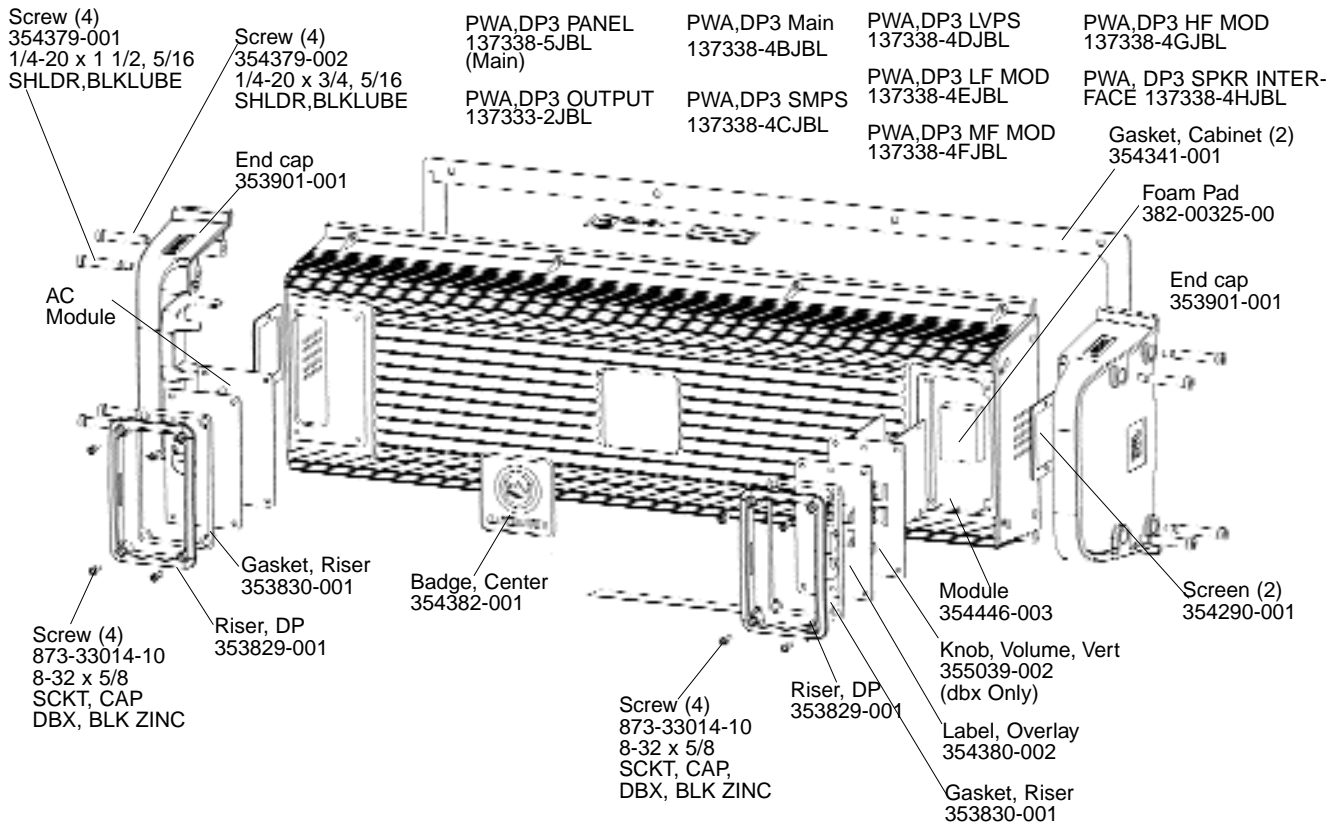
Part No.	Description
354344-001	Amplifier Assembly, Base Model, VT-Series
354344-002X	Amplifier Assembly, VT4888DP
354344-003X	Amplifier Assembly, VT4882DP
354344-004X	Amplifier Assembly, VT4882DP-AN
354344-005X	Amplifier Assembly, VT4882DP-CN
354344-007X	Amplifier Assembly, VT4888DP-AN
354344-008X	Amplifier Assembly, VT4888DP-CN
354344-010X	Amplifier Assembly, VT4880ADP
354344-011X	Amplifier Assembly, VT4880ADP-AN
354344-012X	Amplifier Assembly, VT4880ADP-CN
354344-014X	Amplifier Assembly, VT889ADP
354344-015X	Amplifier Assembly, VT4889ADP-AN
354344-016X	Amplifier Assembly, VT4889ADP-CN
354344-017X	Amplifier Assembly, VT4889ADP-DA
354344-006X	Amplifier Assembly, VT4882DP-DA
354344-009X	Amplifier Assembly, VT4888DP-DA
354344-013X	Amplifier Assembly, VT4880ADP-DA

Input Modules

Note: If ordering an input module you must order 1 of the tuning files below depending on the system model number.

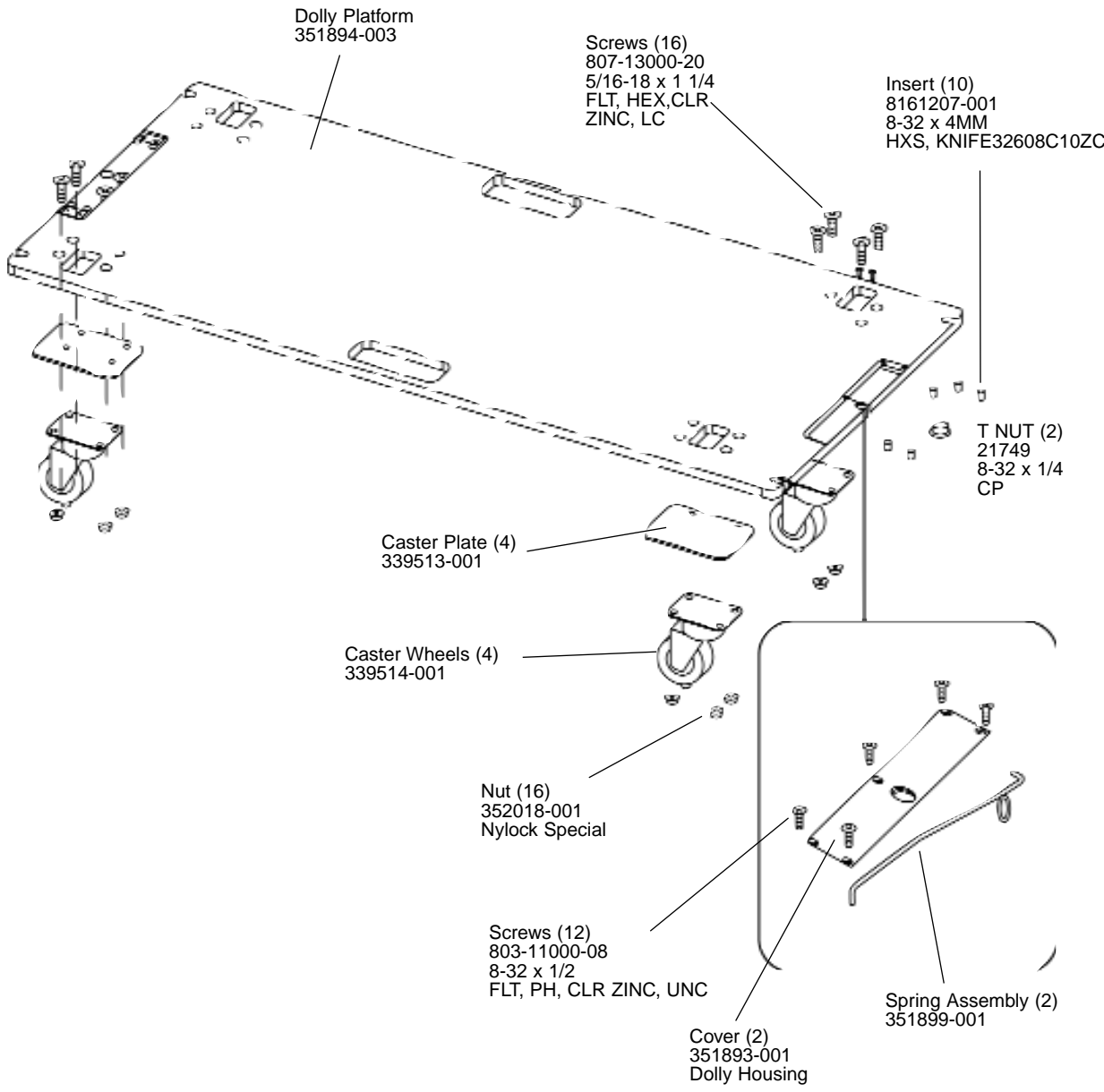
	DP-dbx 361541-001X	DP-AN 361092-001X	DP-CN 361093-001X	DP-DA 444668-001X
Model Numbers				
	Tuning File Part Numbers			
VT4888DP	355059-001	361885-001	361886-001	444729-001
VT4882DP	361282-001	361887-001	361888-001	444728-001
VT4889ADP	365137-001	365113-001	365136-001	444731-001
VT4880ADP	365139-001	365114-001	365138-001	444730-001

NOTE: These (7) individual PWA'S are out of the main panel:



JBL VT4880A-ACC

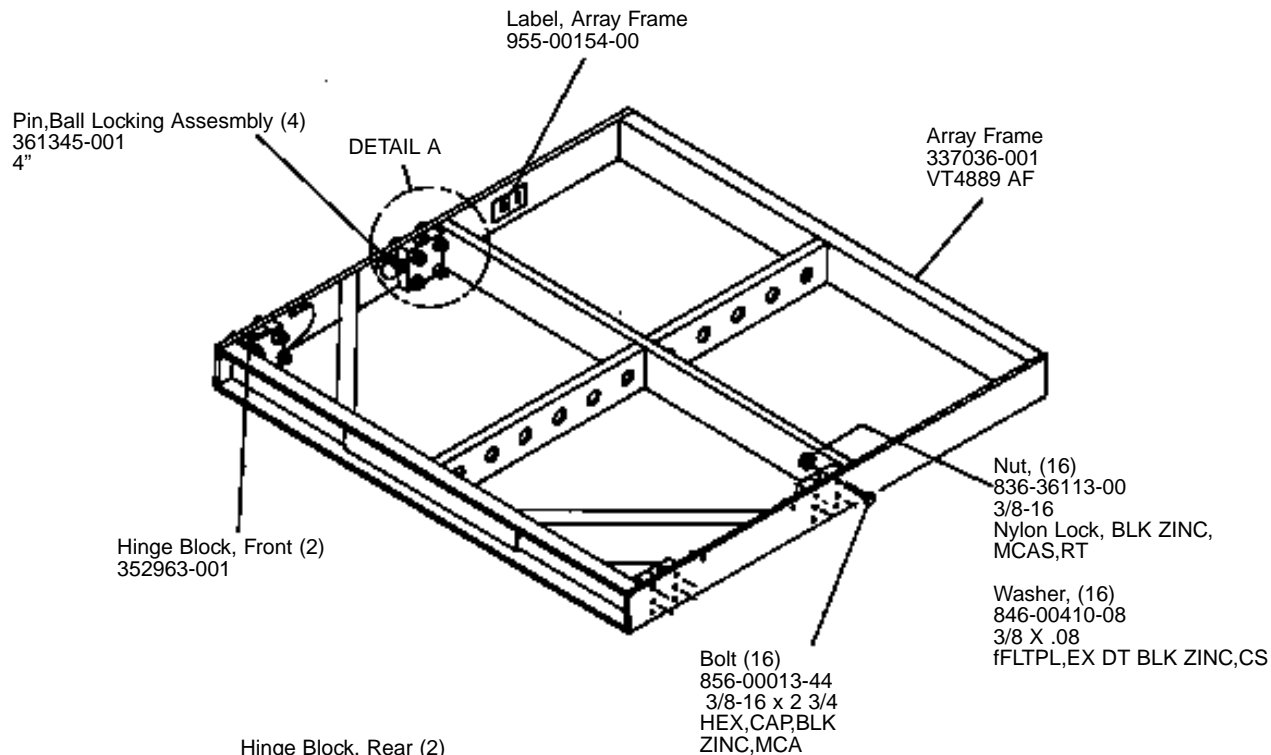
DOLLY ASSEMBLY 339510-002



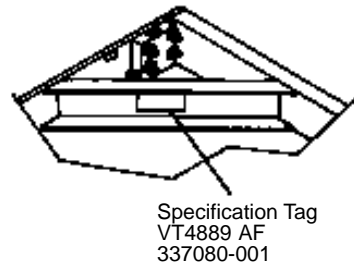
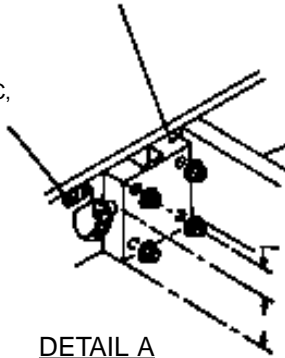
JBL VT4880A-ACC

JBL VT4889-AF

ARRAY FRAME



Screw (4)
804-3111-08
10-32 x 1/2,
TRUSS, PH, BLK ZINC,
LCS



VT4889-AF (Array Frame)

The VT4889-AF array suspension frame is crafted of 6061 Grade heat-treated aluminum. It includes 11 (eleven) attachment holes for fitting 6.5-ton shackles. Each of these holes is fitted with a bronze bushing for longer life. These holes are set on approximately 102mm (4") centers. Each hole has an I.D. (Inner Diameter) of 25.4mm (1").

The frame includes four receiver blocks, designed to attach Hinge Bars from the VT4889 enclosures. These blocks are made of 7075 Grade aluminum. They are coupled with Grade 8 bolts, and the attached steel quick release pins are secured with stainless steel restraining lanyards.

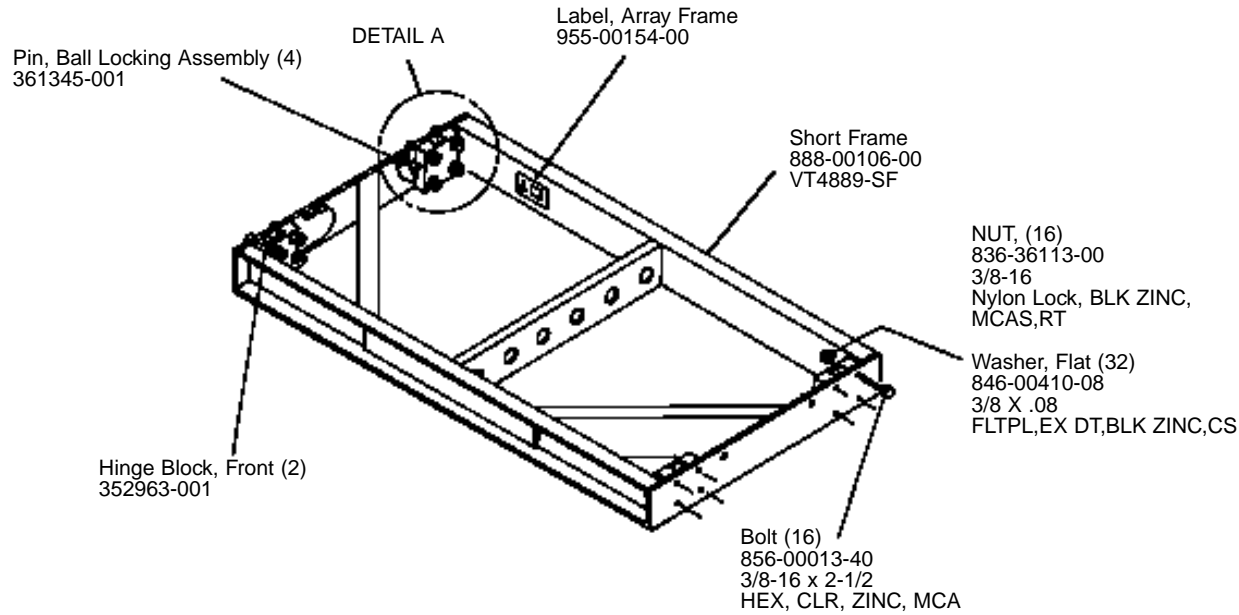
The VT4889-AF weighs 45 kilograms (100 lbs.) It measures approximately 1257mm x 1129mm x 102mm (49.5" x 44.45" x 4").

VT4889 Manual
336890-001

JBL VT4889-AF

JBL VT4889-SF

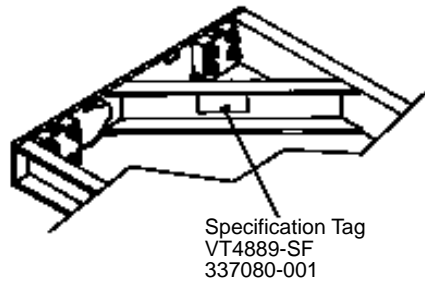
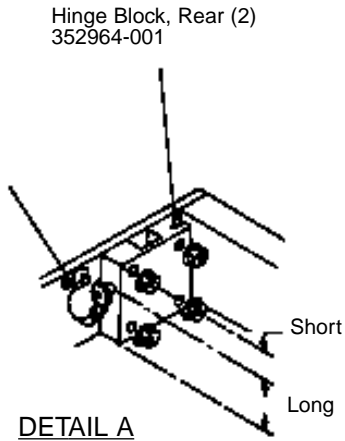
ARRAY FRAME (Short Frame)



Like the larger VT4889-AF, the Short Frame is crafted of 6061 Grade heat-treated aluminum. It includes 6 (six) attachment holes. Each hole is fitted with a bronze bushing for longer life. These holes are set on approximately 102mm (4") centers. Each hole has an I.D. (Inner Diameter of 25.4mm (1")). The frame includes four receiver blocks, designed to attach Hinge Bars from the VT4889 enclosures. These blocks are made of 7075 Grade aluminum. They are coupled with Grade 8 bolts, and the attached steel quick release pins are secured with stainless steel restraining lanyards.

The VT4889-SF weighs only 23.6 kilograms (52 lbs.). It measures approximately 1257mm x 660mm x 102mm (49.5" x 26" x 4").

Screw (4)
804-31110-08
10-32 x 1/2
TRUSS, PH, BLK,
ZINC, LCS



VT4889 Manual
336890-001

JBL VT4889-SF