

# Technical Manual

# VT4880 SPECIFICATIONS



### ACOUSTIC & ELECTRICAL SPECIFICATIONS:

- Nominal Impedance: 8 ohms Each Transducer
- Power Capacity: 4800W Peak (1200 –2400W Recommended Amplifier Power)
- Frequency Range: 26 Hz – 80 Hz (–10 dB)
- Sensitivity: 98 dB, 1 Watt @ 1 Meter (35–120 Hz)
- Crossover Frequencies: 100 Hz or Lower

### SYSTEM COMPONENTS:

- Cabinet: Enclosure Assembly C4880
- Grille: 338792-001 (Foam Backed)
- Low Frequency Transducer: (2) 2258HPL 457mm (18in.) 76.2mm (3 in.) Dual Coil Neodymium Differential Drive
- DC Resistance: 5.2 ohm ±10%

### SYSTEM COMPONENTS: (CONT'D)

- Input Conn. Assy. 338939-005

### AURAL SWEEP TEST SPECIFICATIONS:

- A. System Aural Sweep Test: 10.0V Input, 20 Hz to 200 Hz
- B. L.F. Aural Sweep Test: 10.0V Input, 20 Hz to 200 Hz

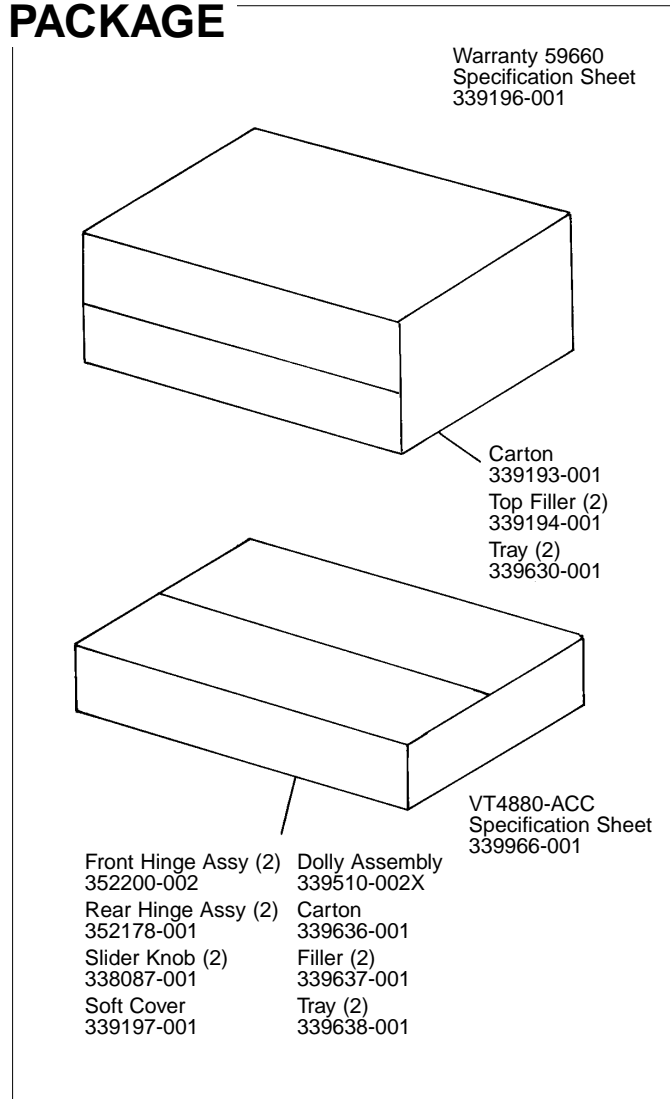
### PHYSICAL SPECIFICATIONS:

- Enclosure Dimensions: 493mm x 1229mm x 860mm D (19.42 x 48.38 x 33.85 in.D.)
- Shipping Weight: 151 lbs. (68.5 kg.)

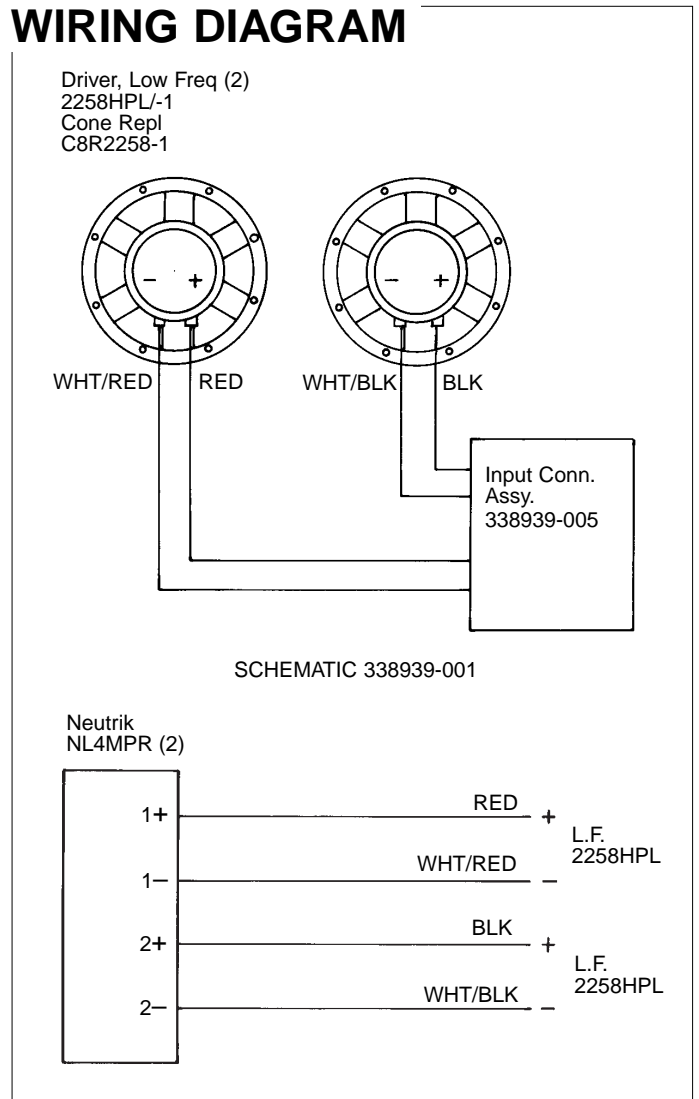
### WARRANTY INFORMATION:

- Refer to Warranty Statement packed with each product.

## PACKAGE

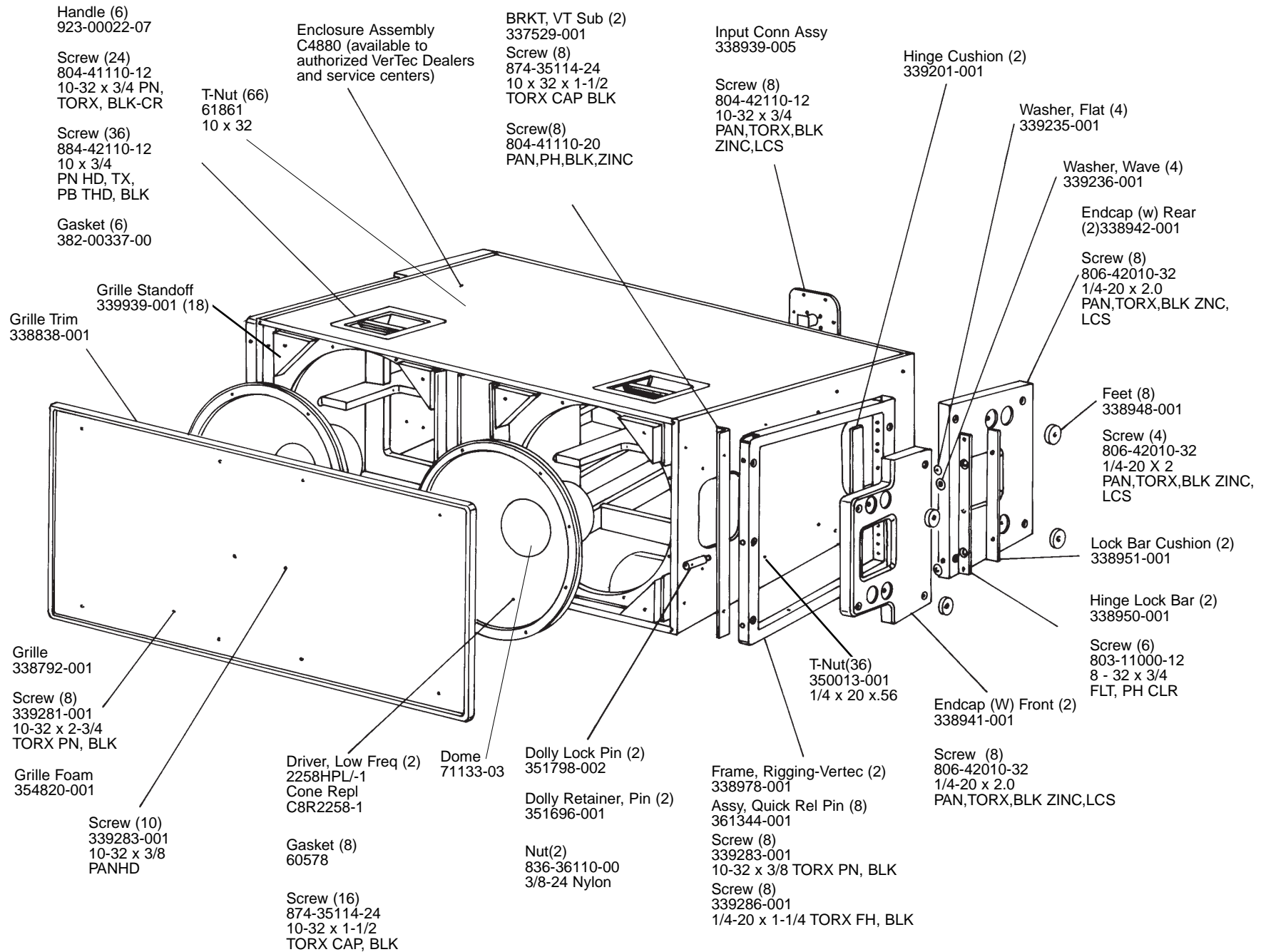


## WIRING DIAGRAM



# JBL VT4880

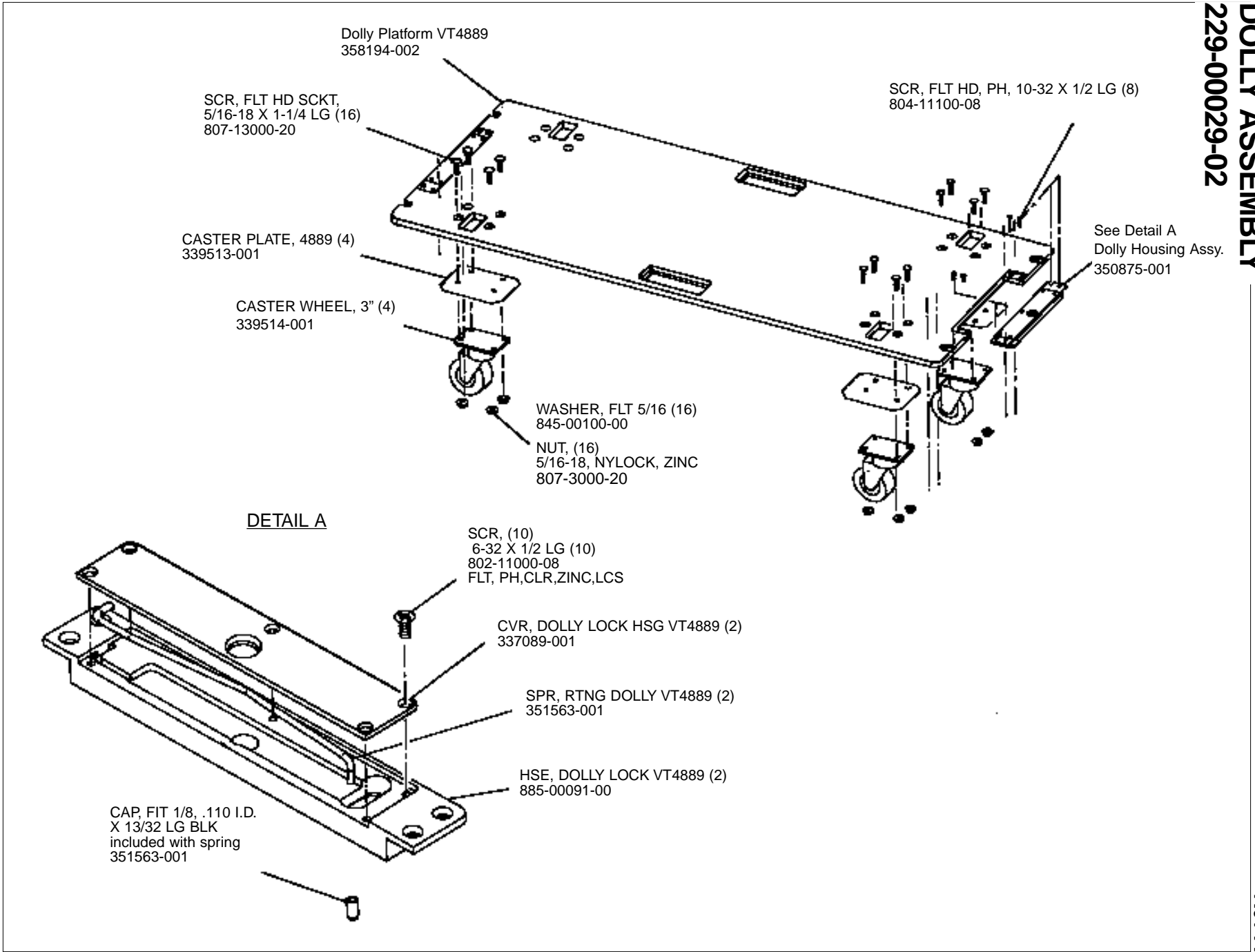
## COMPONENT EXPLODED VIEW



# JBL VT4880/ACC

**DOLLY ASSEMBLY**  
**229-00029-02**

**VT4880/ACC**  
**Rev A**

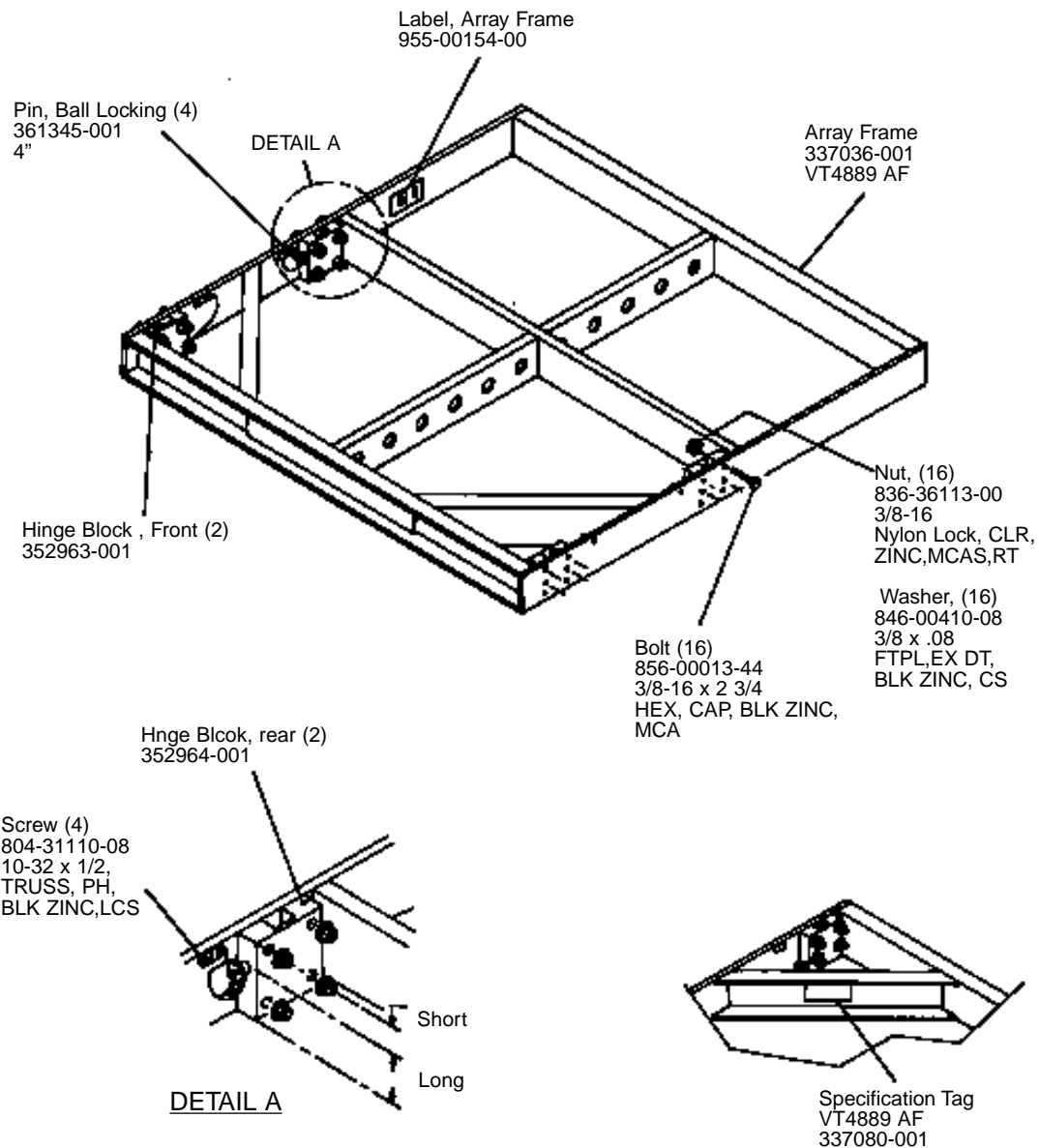




# JBL VT4889-AF

ARRAY FRAME

JBL VT4889-AF



## VT4889-AF (Array Frame)

The VT4889-AF array suspension frame is crafted of 6061 Grade heat-treated aluminum. It includes 11 (eleven) attachment holes for fitting 6.5-ton shackles. Each of these holes is fitted with a bronze bushing for longer life. These holes are set on approximately 102mm (4") centers. Each hole has an I.D. (Inner Diameter) of 25.4mm (1").

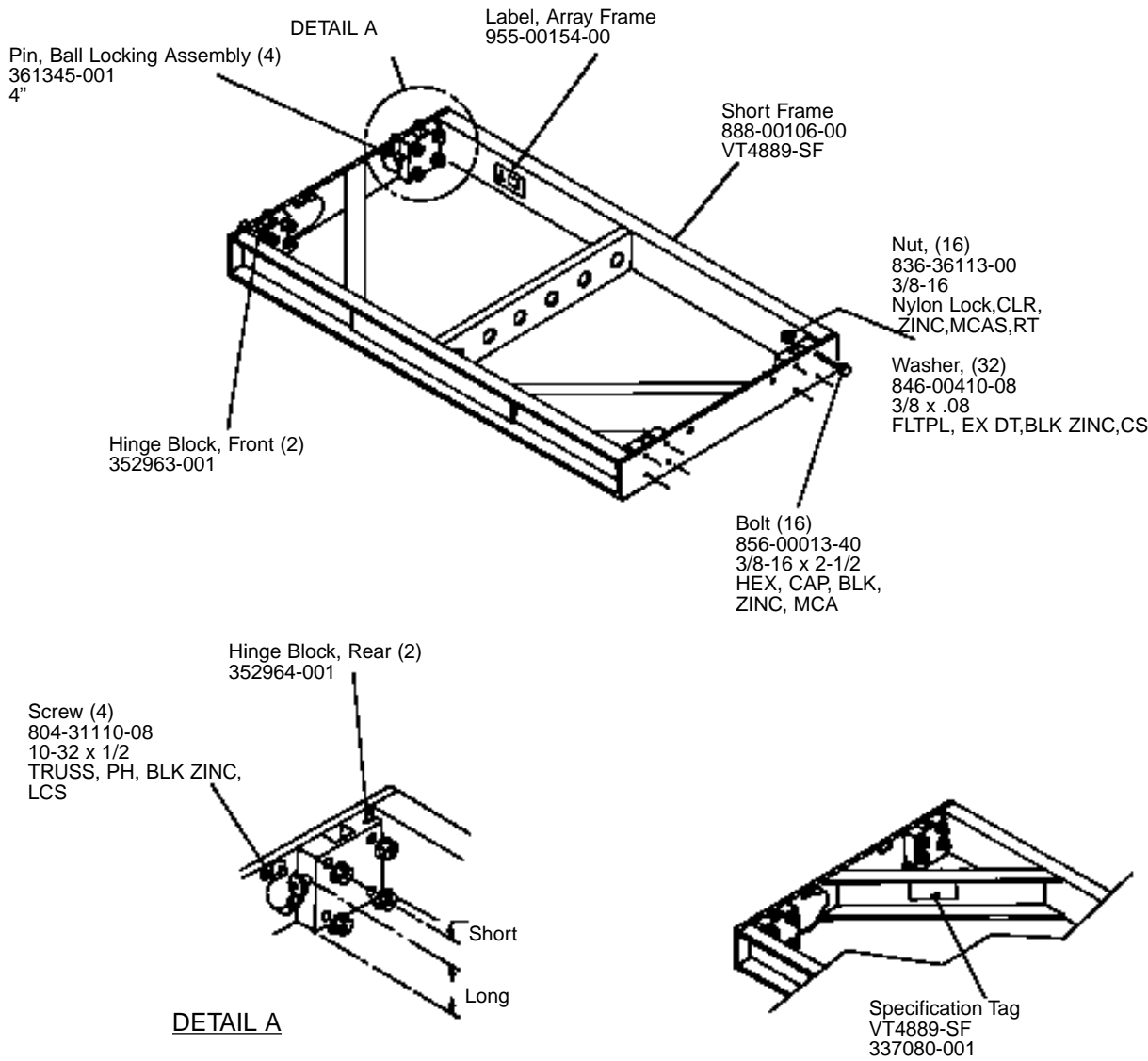
The frame includes four receiver blocks, designed to attach Hinge Bars from the VT4889 enclosures. These blocks are made of 7075 Grade aluminum. They are coupled with Grade 8 bolts, and the attached steel quick release pins are secured with stainless steel restraining lanyards.

The VT4889-AF weighs 45 kilograms (100 lbs.) It measures approximately 1257mm x 1129mm x 102mm (49.5" x 44.45" x 4").

VT4889 Manual  
336890-001

# JBL VT4889-SF

ARRAY FRAME (Short Frame)



## VT4889-SF (Short Frame)

Like the larger VT4889-AF, the Short Frame is crafted of 6061 Grade heat-treated aluminum. It includes 6 (six) attachment holes. Each hole is fitted with a bronze bushing for longer life. These holes are set on approximately 102mm (4") centers. Each hole has an I.D. (Inner Diameter of 25.4mm (1")). The frame includes four receiver blocks, designed to attach Hinge Bars from the VT4889 enclosures. These blocks are made of 7075 Grade aluminum. They are coupled with Grade 8 bolts, and the attached steel quick release pins are secured with stainless steel restraining lanyards.

The VT4889-SF weighs only 23.6 kilograms (52 lbs.). It measures approximately 1257mm x 660mm x 102mm (49.5" x 26" x 4").

VT4889 Manual  
336890-001

# JBL VT4889-SF