

Technical Manual



JBL VRX932LAP/230

SPECIFICATIONS

ACOUSTIC & ELECTRICAL SPECIFICATIONS:

- DPC-2 Internal Amplification Output (at normal load): 1750 Watts Peak, 875 Watts Continuous
- Frequency Response: 75 Hz - 20 kHz (±3 dB)
- Frequency Range: 57 Hz - 20 kHz (-10 dB)
- Maximum Peak Output: 136 dB SPL at 1m
- Signal Processing: DSP based, resident in Input Module
- AC Power Operating Range: 90-132 VAC or 216-264 VAC, 50/60Hz
- AC Input Connector: Neutrik PowerCon (NAC 3MPA)
- AC Loop Through Connector: Neutrik PowerCon (NAC 3MPB)
- Audio Input Connector: XLR with loop through
- AC Current Requirements: 6A per system at 120V, 3A per system at 240V
- AC Line Voltage: User selectable: 120V/240V (-15%, +10%)
- System Management: DSP based limiters for mechanical and thermal protection
- User Controls: Input Attenuator (0-16 dB), ACS Array Configuration Selector, HF level adjustment (+3 dB, 0 dB, -3 dB)
- DPC-2 Output as (Continuous impedance): IEC shaped pink noise into rated load LF: 750 Watts, HF: 125 Watts
- DPC-2 Output section: LF: Dual-Bridged Technology™, Class D HF: Bridged Class D

- Cabinet: Enclosure (Not For Sale)
- Grille: 352282-001
- Low Frequency Transducer: 2262FF, 305 mm (12 in) dual voice coil Differential Drive® woofer with neodymium-magnet
- Bandpass Nominal Impedance: 2 x 2 ohms
- DC Resistance: 5.1 ohms ± 10%
- High Frequency Transducer: (3) 2408J, 38 mm (1.5 in) voice coil, neodymium compression driver
- Bandpass Nominal Impedance: 4 ohms
- DC Resistance: 8.9 ohms ± 0.2%

AURAL SWEEP TEST SPECIFICATIONS:

- A. System Aural Sweep Test: 0.8V (Gain fully CCW)
- B. L.F. Aural Sweep Test: 7V Input, 10 Hz to 1 kHz
- C. H.F. Aural Sweep Test: 1.0V Input, 200 Hz to 1.5 kHz

PHYSICAL SPECIFICATIONS:

- Enclosure Dimensions: 349 x 597 x 444 mm D (13.75 x 23.5 x 17.5 in. D)
- Net Weight: 52 lb (24 kg.)

WARRANTY INFORMATION:

- Refer to Warranty Statement packed with each product.

SYSTEM COMPONENTS:

PACKAGE

Warranty 59660

Power Cord Assembly Pack / Edison, Shucko 355040-002

Contents:
355146-001 (120V) (1) Power Cord

355147-001 (230V) (1) Power Cord

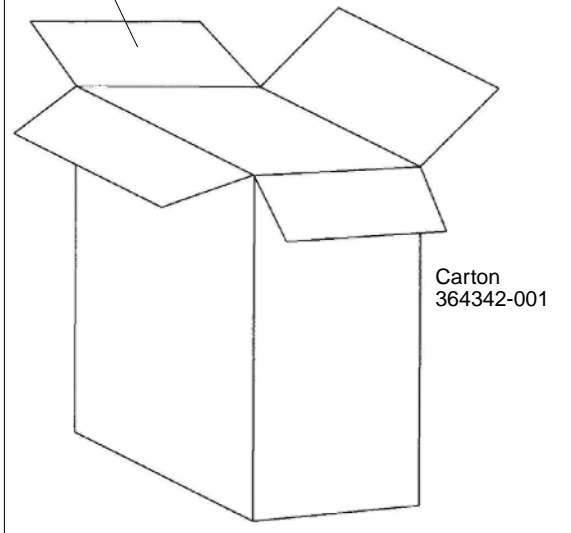
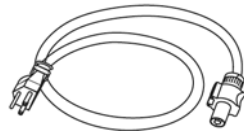
NAC3FCB (1)
Neutrik
Gray PowerCon

Manual
364536-001

Pad, Filler (2)
364343-001

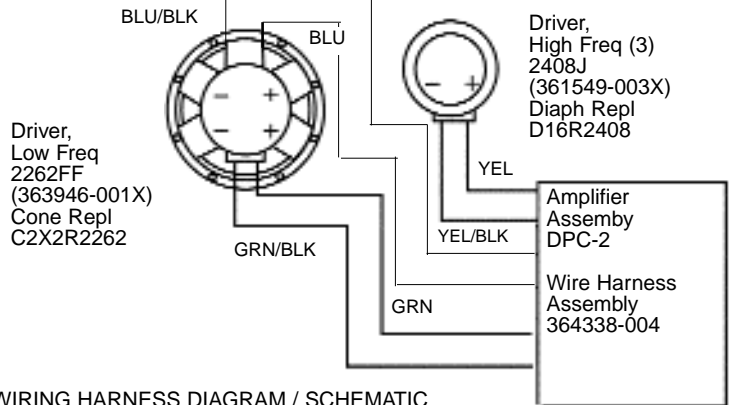
Filler, Grille
364344-001

Pkg, Microfoam
49790P

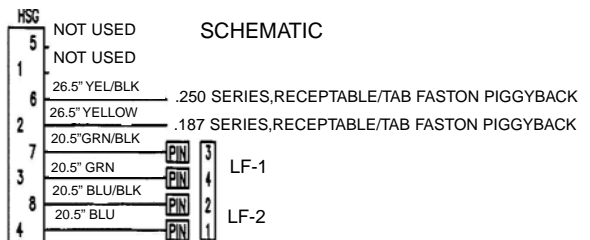
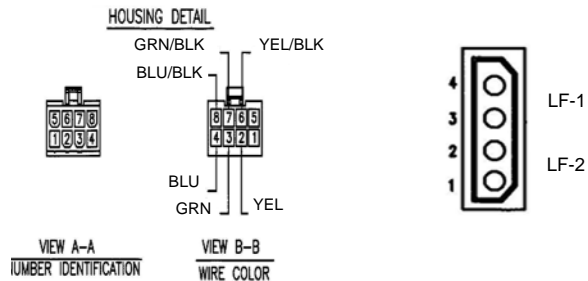


Carton
364342-001

WIRING DIAGRAM



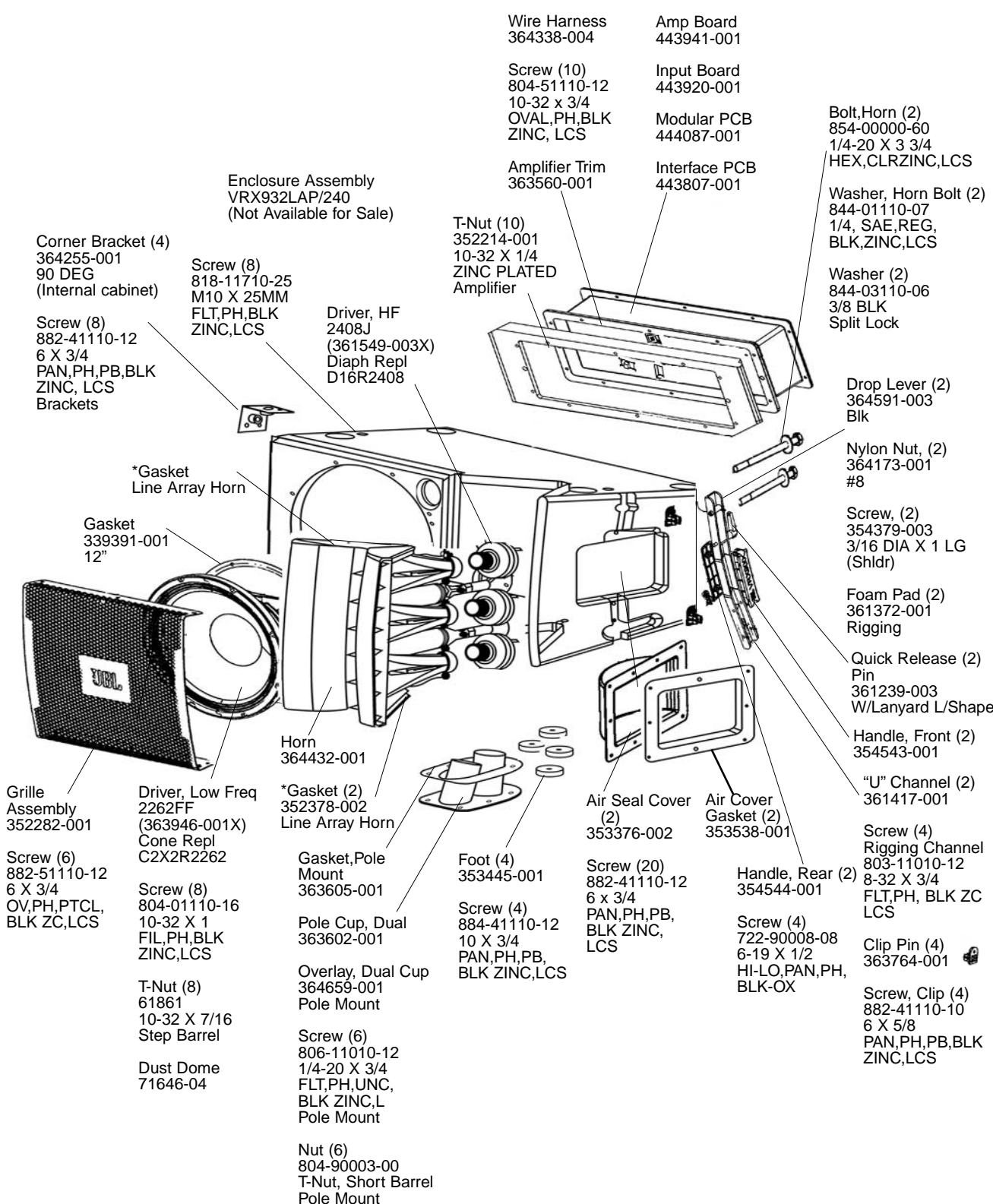
WIRING HARNESS DIAGRAM / SCHEMATIC
354338-004



JBL VRX932LAP/230 REV L

JBL VRX932LAP/230

COMPONENT EXPLODED VIEW



Wire Harness
364338-004

Amp Board
443941-001

Screw (10)
804-51110-12
10-32 x 3/4
OVAL,PH,BLK
ZINC, LCS

Input Board
443920-001

Modular PCB
444087-001

Amplifier Trim
363560-001

Interface PCB
443807-001

Bolt,Horn (2)
854-00000-60
1/4-20 X 3 3/4
HEX,CLRZINC,LCS

Washer, Horn Bolt (2)
844-01110-07
1/4, SAE,REG,
BLK,ZINC,LCS

Washer (2)
844-03110-06
3/8 BLK
Split Lock

Drop Lever (2)
364591-003
Blk

Nylon Nut, (2)
364173-001
#8

Screw, (2)
354379-003
3/16 DIA X 1 LG
(Shldr)

Foam Pad (2)
361372-001
Rigging

Quick Release (2)
Pin
361239-003
W/Lanyard L/Shape

Handle, Front (2)
354543-001

"U" Channel (2)
361417-001

Screw (4)
Rigging Channel
803-11010-12
8-32 X 3/4
FLT,PH, BLK ZC
LCS

Clip Pin (4)
363764-001

Screw, Clip (4)
882-41110-10
6 X 5/8
PAN,PH,PB,BLK
ZINC,LCS

Enclosure Assembly
VRX932LAP/240
(Not Available for Sale)

T-Nut (10)
352214-001
10-32 X 1/4
ZINC PLATED
Amplifier

Corner Bracket (4)
364255-001
90 DEG
(Internal cabinet)

Screw (8)
882-41110-12
6 X 3/4
PAN,PH,PB,BLK
ZINC, LCS
Brackets

Screw (8)
818-11710-25
M10 X 25MM
FLT,PH,BLK
ZINC,LCS

Driver, HF
2408J
(361549-003X)
Diaph Repl
D16R2408

*Gasket
Line Array Horn

Gasket
339391-001
12"

Horn
364432-001

Grille
Assembly
352282-001

Driver, Low Freq
2262FF
(363946-001X)
Cone Repl
C2X2R2262

*Gasket (2)
352378-002
Line Array Horn

Screw (6)
882-51110-12
6 X 3/4
OV,PH,PTCL,
BLK ZC,LCS

Screw (8)
804-01110-16
10-32 X 1
FIL,PH,BLK
ZINC,LCS

Gasket,Pole
Mount
363605-001

Foot (4)
353445-001

Screw (4)
884-41110-12
10 X 3/4
PAN,PH,PB,
BLK ZINC,LCS

Screw (20)
882-41110-12
6 x 3/4
PAN,PH,PB,
BLK ZINC,
LCS

Handle, Rear (2)
354544-001

Screw (4)
722-90008-08
6-19 X 1/2
HI-LO,PAN,PH,
BLK-OX

Pole Cup, Dual
363602-001

Overlay, Dual Cup
364659-001
Pole Mount

Screw (6)
806-11010-12
1/4-20 X 3/4
FLT,PH,UNC,
BLK ZINC,L
Pole Mount

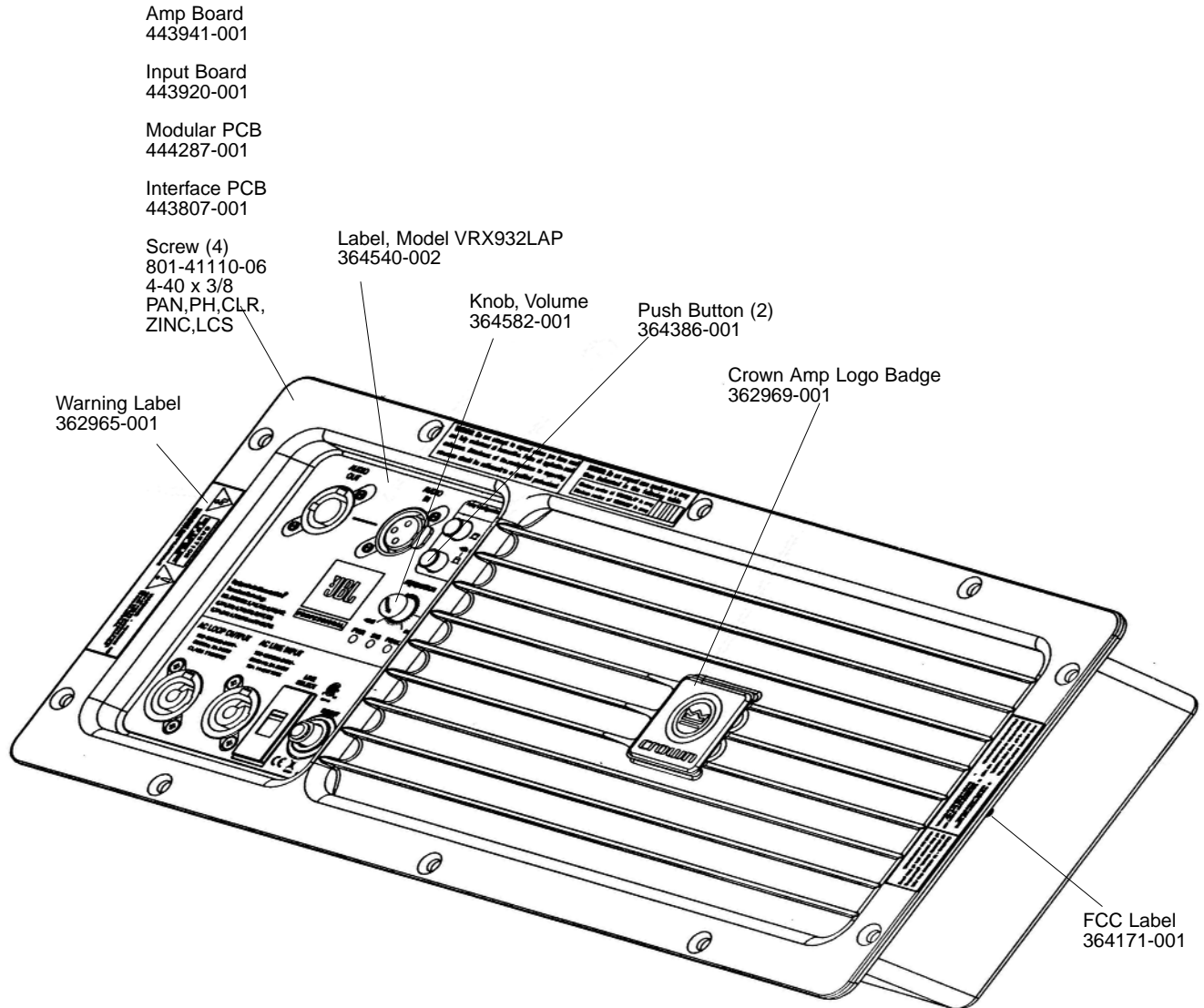
Nut (6)
804-90003-00
T-Nut, Short Barrel
Pole Mount

Dust Dome
71646-04

JBL VRX932LAP/230

AMPLIFIER ASSEMBLY

363679-004

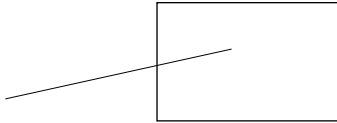


JBL VRX932LAP/230

JBL VRX-AF

ARRAY FRAME ASSEMBLY

Manual
353551-007



- 4" 1/4-20 bolts to horn — 5" — caution! You can break the horn at 60"/lbs, which is pretty easy with a ratchet (pull on the end of a 1' handle with 5 pounds). 35"/lbs = 2.9 ft/lbs.
- Screws to handle cup from outside of rigging frame — 16"/lbs. Current production is getting machine screw and keps nut on deviation (which could take much more torque), but when we switch to sheetmetal screw (which can be serviced without removing horn/grille), it will be sensitive (likely failure torque <30"/lbs)
- Woofer screws, typical 22"/lbs.
- M10 rigging screws — 40"/lbs minimum; don't forget the threadlock! Ditto the 1/4-20's on the pole mount (except no threadlock)

*VRX Service Kit (includes):

Drop Level Black VRX932LA
361319-001

Nut, Keps (2)
832-30010-00
Steel BLK ZINC
and EM LUBE

Screw (shldr) (2)
354379-001
3/16 DIA X 1 LG

