

# Technical Manual

# JBL P724P



## SPECIFICATIONS

### ACOUSTIC & ELECTRICAL SPECIFICATIONS:

- Nominal Impedance: 8 ohms
- Power Rating: 300W IEC
- Frequency Response: 60 Hz - 16 KHz
- Sensitivity: 100 dB(1m, 2.83V)
- Crossover Frequency: Passiv: 1200 Hz

### SYSTEM COMPONENTS:

- Cabinets: CP724
- Grille: GP724
- Low Frequency Transducer: 300 mm (12 in) Cone Transducer (2020H)
- DC Resistance: 4.8 ohms  $\pm$  10% Aluminium Wire

### SYSTEM COMPONENTS: (cont'd)

- High Frequency Transducer: 25 mm (1 in) Pure Titanium Diaphragm Compression Driver (2426H)
- DC Resistance: 3.2 ohms  $\pm$  8% Aluminium Wire
- Crossover Network: HF Network: 270639 LF Network: 270674

### PHYSICAL SPECIFICATIONS:

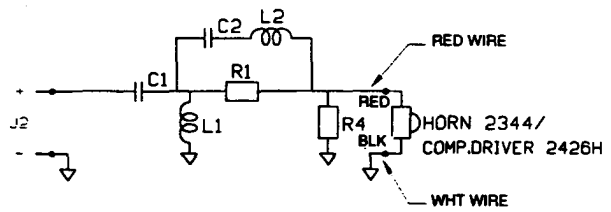
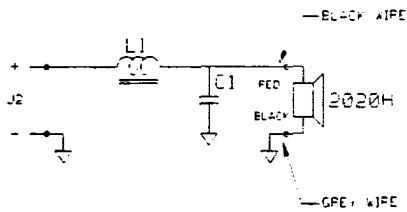
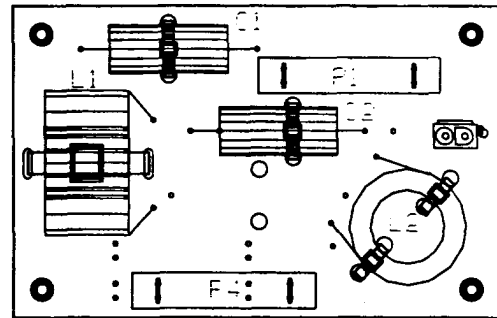
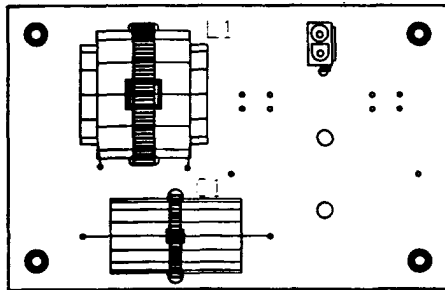
- Enclosure Dimensions: 646 x 362 x 356 mm  
25 3/8 x 14 1/4 x 14 in
- Shipping Weight: 28.5 kg (62.7 IBS)

### NEUTRIK CONNECTOR

- Pins 1  $\pm$  = Loopthrough
- Pins 2  $\pm$  = Input
- Pins 3  $\pm$  = Loopthrough
- Pins 4  $\pm$  = Loopthrough

⊕ Denotes outward cone movement with positive voltage to pin 2 + .

## WIRING DIAGRAM



- |    |                            |        |
|----|----------------------------|--------|
| C1 | Capacitor 4.7 uF / 250 V   | 963608 |
| L1 | Inductor 2.5 mH 01.2 SP-FL | 965526 |

- |    |                           |        |
|----|---------------------------|--------|
| C1 | Capacitor 8.0 uF / 250 V  | 963605 |
| C2 | Capacitor 8.0 uF / 250 V  | 963605 |
| L1 | Inductor 0.85 mH 01,0 air | 965126 |
| L2 | Inductor 0.1 mH 01,2 air  | 965172 |
| R1 | Resistor 20 ohm / 20 W    | 964507 |
| R2 | Resistor 6.8 ohm / 20 W   | 964503 |

## PACKAGE

CARTON  
INCLUDING ENDPADS  
898640

JBL P724P