

Technical Manual

JBL P724



SPECIFICATIONS

ACOUSTIC & ELECTRICAL SPECIFICATIONS:

- Nominal Impedance: LF 8 ohms, HF 8 ohms
- Power Rating: HF 100 W continuous program above 1.2 kHz
LF 300W AES
- Frequency Response: 60 Hz - 20 kHz
- Sensitivity: LF 100 dB (2.83 V, 1 m)
HF 105 dB (2.83 V, 1 m)
- Crossover Frequency: 1000 Hz - 1500 Hz
Low cut 45 Hz

SYSTEM COMPONENTS:

- Cabinets: CP724
- Grille: GP724 (240640)
- Low Frequency Transducer: 300 mm (12 in)
Cone Transducer (2020H)
- DC Resistance: 4.8 ohms \pm 10% Aluminium Wire

SYSTEM COMPONENTS: (cont'd)

- High Frequency Transducer: 25 mm (1 in)
Pure Titanium Diaphragm
Compression Driver (2426H)
- DC Resistance: 3.2 ohms \pm 8% Aluminium Wire
- Crossover Network: C236

PHYSICAL SPECIFICATIONS:

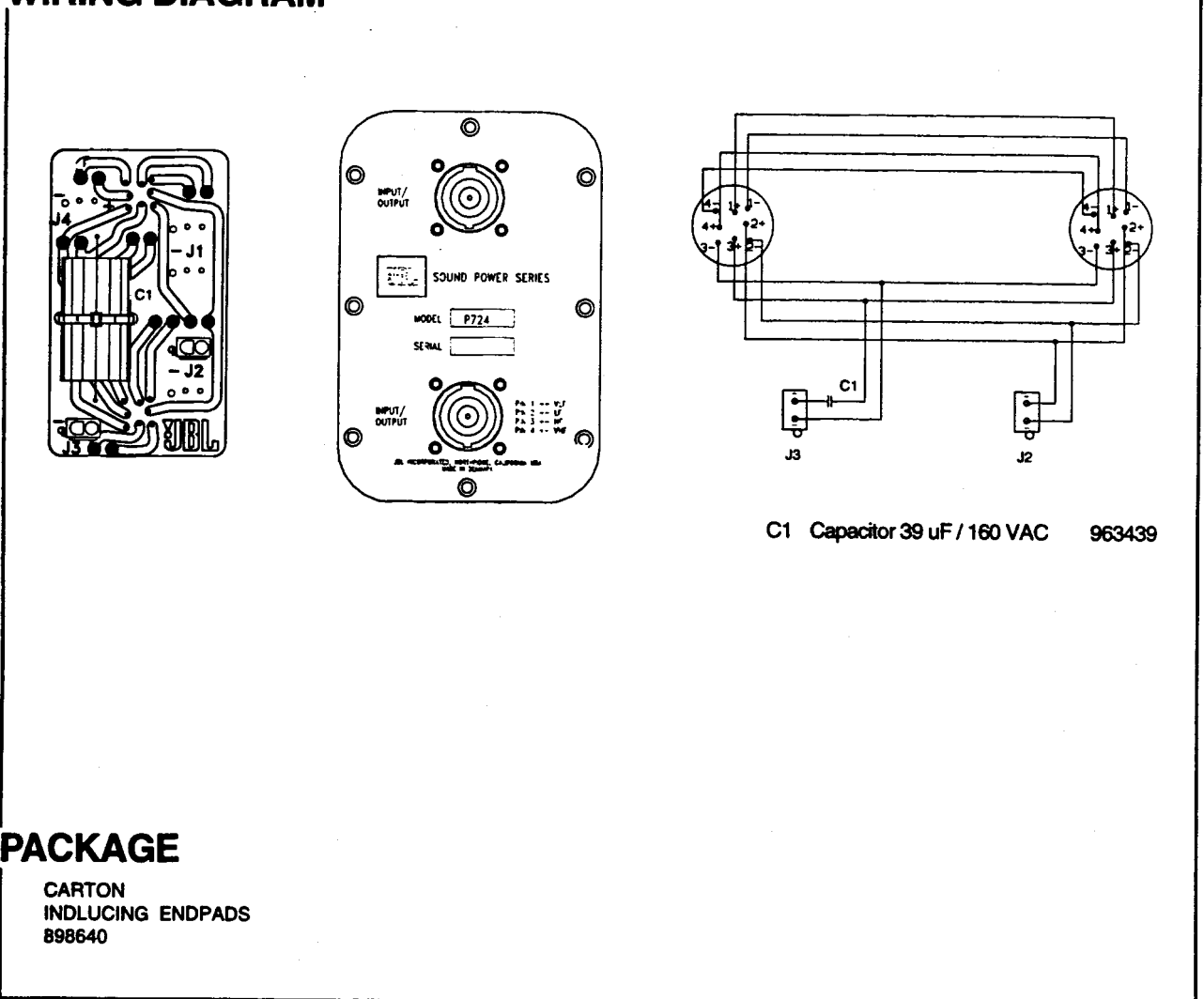
- Enclosure Dimensions: 646 x 362 x 356 mm
25 3/8 x 14 1/4 x 14 in
- Shipping Weight: 28.5 kg (62.7 IBS)

NEUTRIK CONNECTOR

- Pins 1 \pm = Loopthrough
- Pins 2 \pm = Input LF
- Pins 3 \pm = Input HF
- Pins 4 \pm = Loopthrough

⊕ Denotes outward cone movement with positive voltage to pin 2 +, pin 3 +.

WIRING DIAGRAM



PACKAGE

CARTON
INCLUDING ENDPADS
898640

JBL P724

Technical Manual

JBL P724P



SPECIFICATIONS

ACOUSTIC & ELECTRICAL SPECIFICATIONS:

- Nominal Impedance: 8 ohms
- Power Rating: 300W IEC
- Frequency Response: 60 Hz - 16 KHz
- Sensitivity: 100 dB(1m, 2.83V)
- Crossover Frequency: Passiv: 1200 Hz

SYSTEM COMPONENTS:

- Cabinets: CP724
- Grille: GP724
- Low Frequency Transducer: 300 mm (12 in) Cone Transducer (2020H)
- DC Resistance: 4.8 ohms \pm 10% Aluminium Wire

SYSTEM COMPONENTS: (cont'd)

- High Frequency Transducer: 25 mm (1 in) Pure Titanium Diaphragm Compression Driver (2426H)
- DC Resistance: 3.2 ohms \pm 8% Aluminium Wire
- Crossover Network: HF Network: 270639 LF Network: 270674

PHYSICAL SPECIFICATIONS:

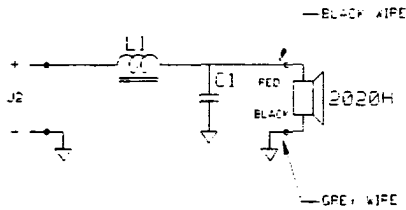
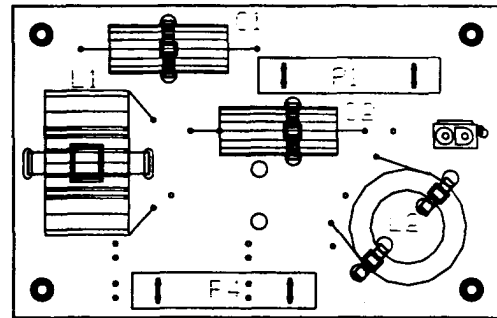
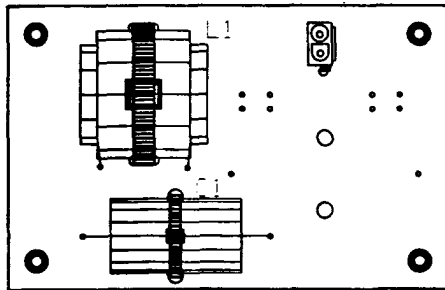
- Enclosure Dimensions: 646 x 362 x 356 mm
25 3/8 x 14 1/4 x 14 in
- Shipping Weight: 28.5 kg (62.7 IBS)

NEUTRIK CONNECTOR

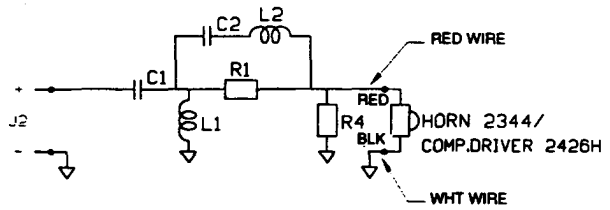
- Pins 1 \pm = Loopthrough
- Pins 2 \pm = Input
- Pins 3 \pm = Loopthrough
- Pins 4 \pm = Loopthrough

⊕ Denotes outward cone movement with positive voltage to pin 2 + .

WIRING DIAGRAM



- C1 Capacitor 4.7 uF / 250 V 963608
- L1 Inductor 2.5 mH 01.2 SP-FL 965526



- C1 Capacitor 8.0 uF / 250 V 963605
- C2 Capacitor 8.0 uF / 250 V 963605
- L1 Inductor 0.85 mH 01,0 air 965126
- L2 Inductor 0.1 mH 01,2 air 965172
- R1 Resistor 20 ohm / 20 W 964507
- R2 Resistor 6.8 ohm / 20 W 964503

PACKAGE

CARTON
INCLUDING ENDPADS
898640

JBL P724P