

Technical Manual

JBL I750



SPECIFICATIONS

ACOUSTIC & ELECTRICAL SPECIFICATIONS:

- Nominal Impedance: LF: 4 ohm
HF: 8 ohm
- Power Rating LF: 600 W AES
50 Hz - 16 kHz
HF: 150 W Continuous Program above 1 kHz
LF: 102 dB (1m, 2V)
HF: 111 dB (1m, 2.83V)
- Frequency Response: 50 Hz - 16 kHz
- Sensitivity: LF: 102 dB (1m, 2V)
HF: 111 dB (1m, 2.83V)
- Crossover Frequency: Active C236

SYSTEM COMPONENTS:

- Cabinet: CI750
- Grill: GI750
- Low Frequency Transducer: 300 mm (12 in)
Cone Transducer (2020H)
- DC Resistance: 4.8 ohm \pm 10% Aluminium Wire

SYSTEM COMPONENTS:

- High Frequency Transducer: 100 mm (4 in)
Pure Titanium Diaphragm
Compression Driver (2447H)
- DC Resistance: 4.10 ohm \pm 8% Aluminium Wire

PHYSICAL SPECIFICATIONS:

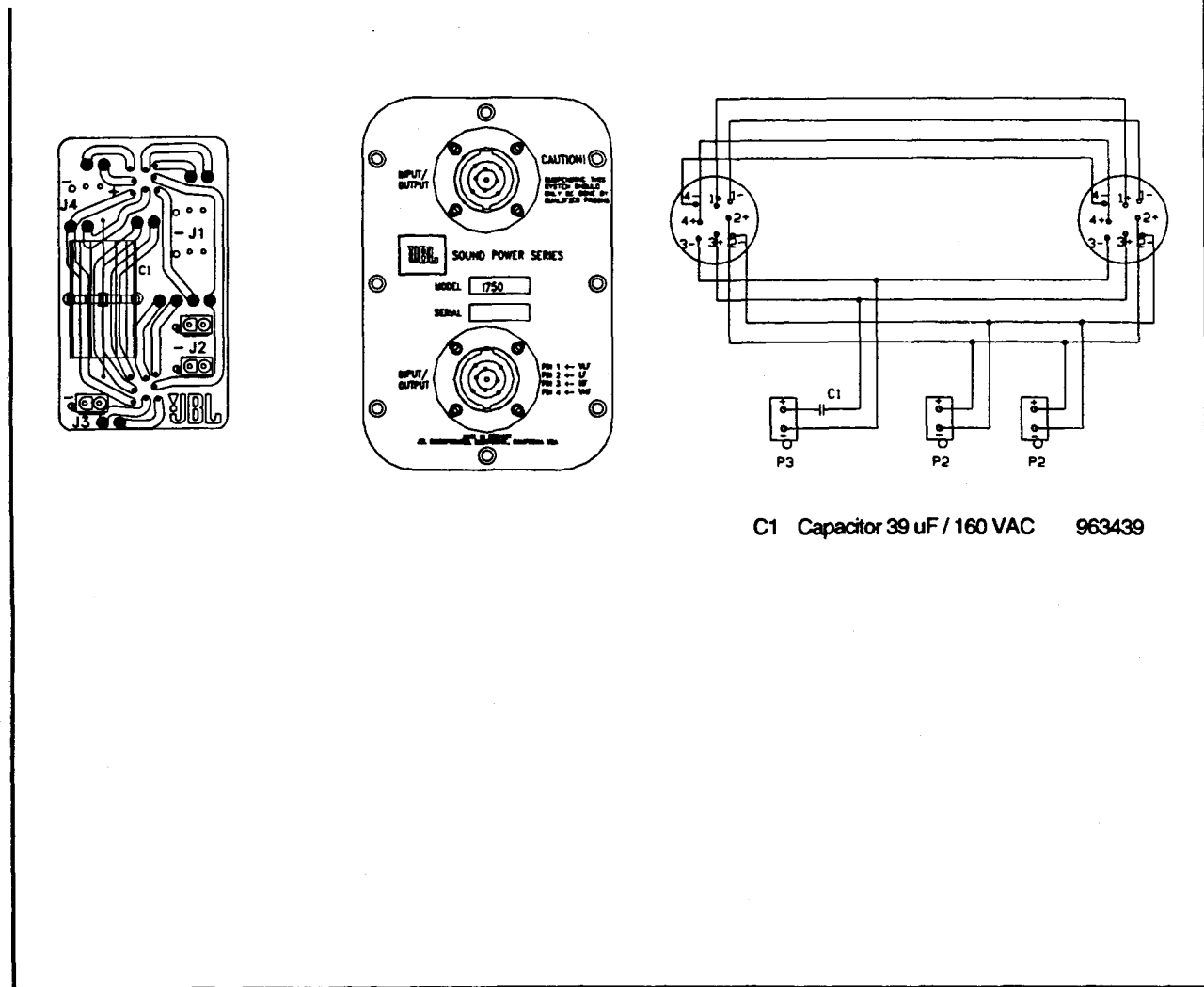
- Enclosure Dimensions: 1140 x 503 x 480 mm
44.88 x 19.78 x 18.88 in)
- Shipping Weight: 74.5 kg (163.9 lb)

NEUTRIK CONNECTOR

- Pins 1 \pm = Loophthrough
- Pins 2 \pm = Input LF
- Pins 3 \pm = Input HF
- Pins 4 \pm = Loophthrough

⊕ Denotes outward cone movement with positive voltage applied to LF pin 2 + and HF pin 3 +.

WIRING DIAGRAM



JBL I750

JBL I750

COMPONENT EXPLODED VIEW

TO CHANGE DIAPHRAGM:
Unscrew the 4 screws holding
the horn, and turn anti-clockwise.

NOTE!
A complete horn consists
of 2 part numbers.

