

Technical Manual

JBL I724P



SPECIFICATIONS

ACOUSTIC & ELECTRICAL SPECIFICATIONS:

- Nominal Impedance: 8 ohm
- Power Rating: 300W IEC
- Frequency Responce: 60 Hz - 16 kHz
- Sensitivity: 100 dB(1m, 2.83V)
- Crossover Frequency: Passiv: 1200 Hz

SYSTEM COMPONENTS:

- Cabinets: CP724
- Grille: GP724
- Low Frequency Transducer: 300 mm (12 in)
Cone Transducer (2020H)
- DC Resistance: 4,8 ohm ± 10% Aluminium Wire

SYSTEM COMPONENTS: (cont'd)

- High Frequency Transducer: 25 mm (1 in)
Pure Titanium Diaphragm
Compression Driver (2426H)
- DC Resistance: 3,2 ohm ± 8% Aluminium Wire
- Crossover Network:
HF Network: 270639
LF Network: 270674

PHYSICAL SPECIFICATIONS:

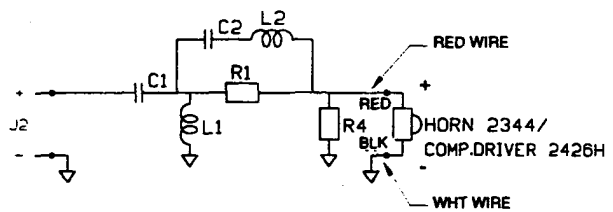
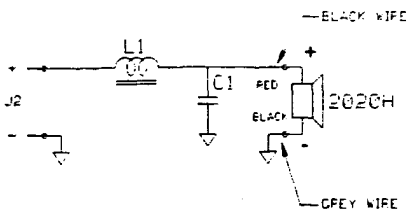
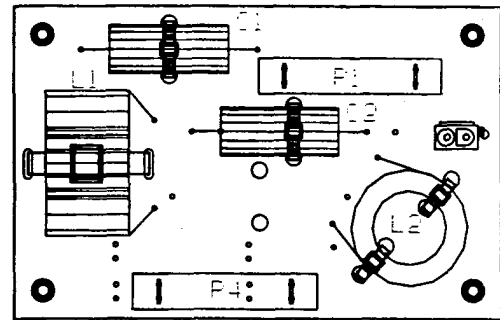
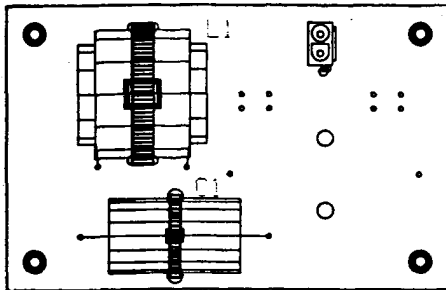
- Enclosure Dimensions: 646 x 362 x 356 mm
25 3/8 x 14 1/4 x 14 in
- Shipping Weight: 28,5 kg (62,7 IBS)

NEUTRIK CONNECTOR

- Pins 1 ± = Loopthrough
- Pins 2 ± = Input LF
- Pins 3 ± = Input HF
- Pins 4 ± = Loopthrough

⊕ Denotes outward cone movement with positive voltage to pin 2 +.

WIRING DIAGRAM



- | | | |
|----|----------------------------|--------|
| C1 | Capacitor 4,7 uF / 250 V | 963608 |
| L1 | Inductor 2,5 mH 01,2 SP-FL | 965526 |

- | | | |
|----|---------------------------|--------|
| C1 | Capacitor 8,0 uF / 250 V | 963605 |
| C2 | Capacitor 8,0 uF / 250 V | 963605 |
| L1 | Inductor 0,85 mH 01,0 air | 965126 |
| L2 | Inductor 0,1 mH 01,2 air | 965172 |
| R1 | Resistor 20 ohm / 20 W | 964507 |
| R4 | Resistor 6,8 ohm / 20 W | 964503 |

PACKAGE

CARTON
INCLUDING ENDPADS
898640

JBL I724P

JBL I724P

COMPONENT EXPLODED VIEW

