

# Technical Manual

# JBL I330P



## SPECIFICATIONS

### ACOUSTIC & ELECTRICAL SPECIFICATIONS:

- Nominal Impedance: 8 ohm
- Power Rating: 350W IEC
- Frequency Response: 60 Hz - 20 kHz
- Sensitivity: 98 dB(1m, 2.83V)
- Crossover Frequency: 1300 Hz

### SYSTEM COMPONENTS:

- Cabinets: CI330P
- Low Frequency Transducer: (12 in) Cone M222-8
- DC Resistance: 4,8 ohm  $\pm$  10% Aluminium Wire

### SYSTEM COMPONENTS:

- High Frequency Transducer: 19 mm (0,75 in) Pure Titanium Diaphragm Driver (2417H)
- DC Resistance: 3,2 ohm  $\pm$  8% Aluminium Wire
- Crossover Network: 270631

### PHYSICAL SPECIFICATIONS:

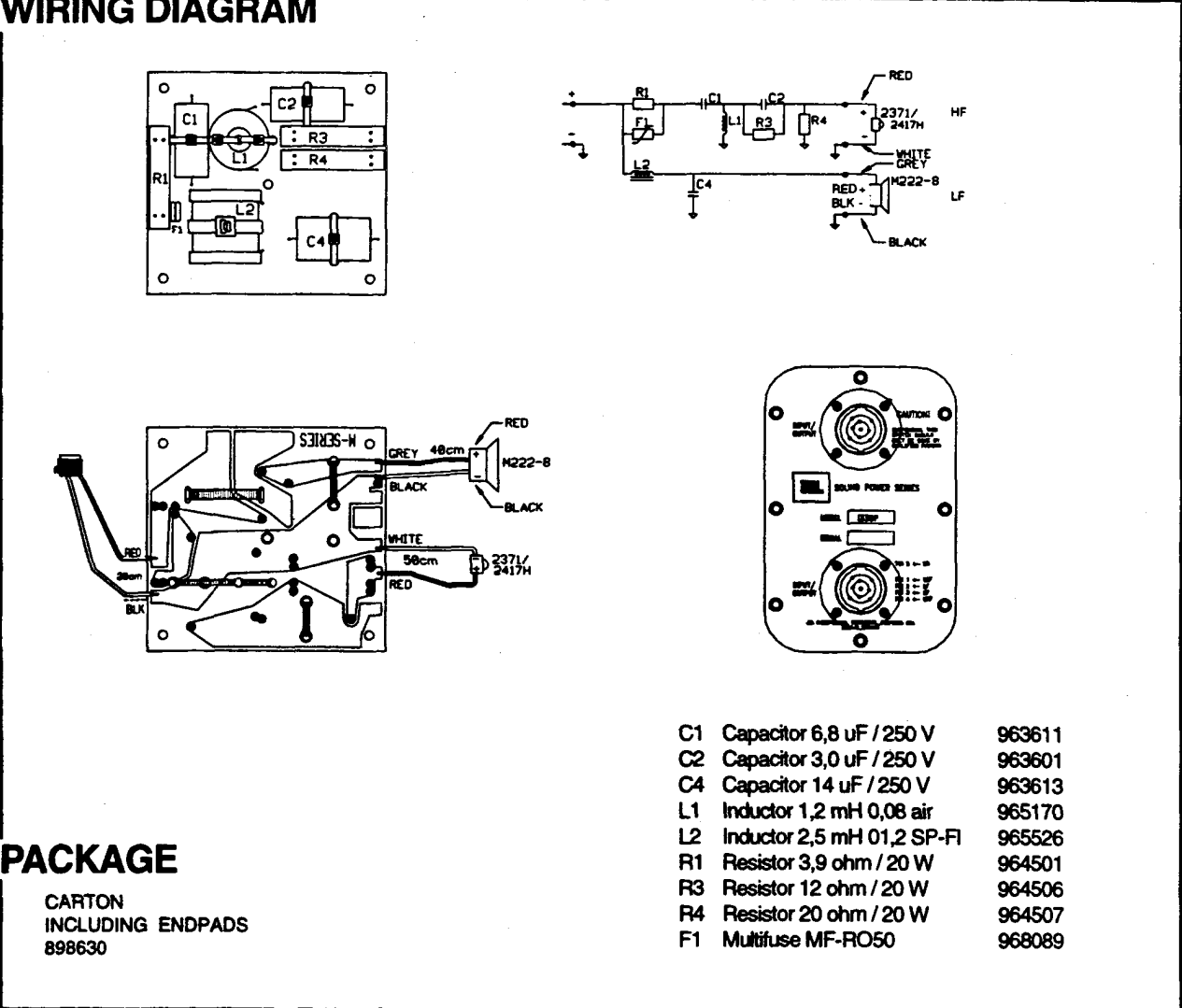
- Enclosure Dimensions: 720 x 440 x 332 mm
- Shipping Weight: 36,5 kg (80,3 lb)

### NEUTRIK CONNECTOR

- Pins 1  $\pm$  = Loopthrough
- Pins 2  $\pm$  = Input
- Pins 3  $\pm$  = Loopthrough
- Pins 4  $\pm$  = Loopthrough

⊕ Denotes outward cone movement with positive voltage applied to pin 2 +.

## WIRING DIAGRAM



- |    |                            |        |
|----|----------------------------|--------|
| C1 | Capacitor 6,8 uF / 250 V   | 963611 |
| C2 | Capacitor 3,0 uF / 250 V   | 963601 |
| C4 | Capacitor 14 uF / 250 V    | 963613 |
| L1 | Inductor 1,2 mH 0,08 air   | 965170 |
| L2 | Inductor 2,5 mH 01,2 SP-FI | 965526 |
| R1 | Resistor 3,9 ohm / 20 W    | 964501 |
| R3 | Resistor 12 ohm / 20 W     | 964506 |
| R4 | Resistor 20 ohm / 20 W     | 964507 |
| F1 | Multifuse MF-RO50          | 968089 |

## PACKAGE

CARTON  
INCLUDING ENDPADS  
898630

JBL I330P

# JBL I330P

## COMPONENT EXPLODED VIEW

