

# Technical Manual

# JBL PD5200/43-WH



## SPECIFICATIONS

### ACOUSTIC & ELECTRICAL SPECIFICATIONS:

- Nominal Impedance: 8 ohms
- Power Capacity: M.F. 350 W (1400 W peak), 100 Hrs  
P.M. 300 W (1200 W peak), 100 Hrs.  
H.F. 75 W (300 W peak), 2 Hrs
- Frequency Range: 200 Hz – 18 kHz (-10 dB)
- Sensitivity: M.F. 112 dB SPL (1W @ 1m)  
H.F. 116 dB SPL (1W @ 1m)
- System Sensitivity: Passive Mode 111 dB SPL (1W @ 1m)
- Passive Crossover: 6th Order (36 dB/oct) Linkwitz-Riley  
HP and LP, 1.7 kHz

### SYSTEM COMPONENTS:

- Cabinet: (Not For Sale)
- Grille: 352235-001, 352235-003 (Wh)
- Mid Frequency Transducer: 200mm (8 in.) driver with dual voice coil (2169H)
- DC Resistance: 5.1 ohms

### SYSTEM COMPONENTS: (cont'd)

- High Frequency Transducer: 38mm (1.5 in.) exit compression driver with 75mm (3 in.) voice coil (2431H)
- DC Resistance: 4.0 ± 0.4 ohms
- Crossover Network: 353027-001

### AURAL SWEEP TEST SPECIFICATIONS:

- A. System Aural Sweep Test: 7.0V Input, 40 Hz to 20 kHz
- B. M.F. Aural Sweep Test: 7.0V Input, 20 Hz to 1.2 kHz
- C. H.F. Aural Sweep Test: 2.83V Input, 100 Hz to 1.0 kHz

### PHYSICAL SPECIFICATIONS:

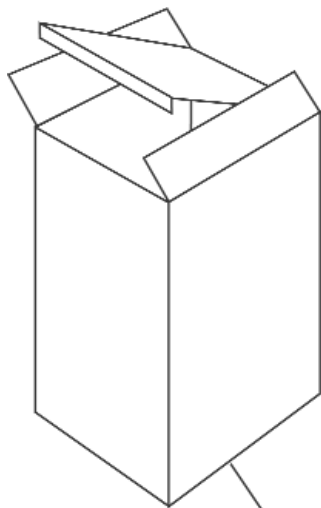
- Enclosure Dimensions: 991mm x 673mm x 897mm D  
(39.0 x 26.5 x 35.3 in. D)
- Net Weight: 152 lbs. (69.0 kg.)

### WARRANTY INFORMATION:

- Refer to Warranty Statement packed with each product.

## PACKAGE

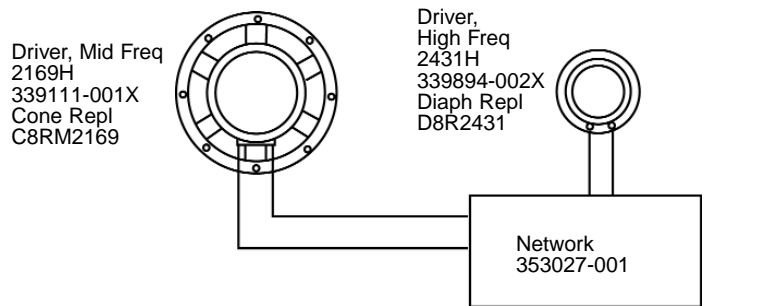
Warranty 59660



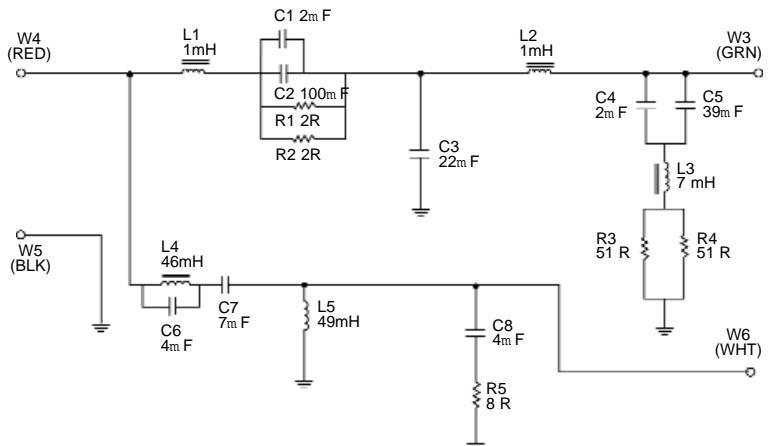
Carton  
352163-001

Top and Bottom Filler  
352164-001  
Poly Bag  
350691-001

## WIRING DIAGRAM

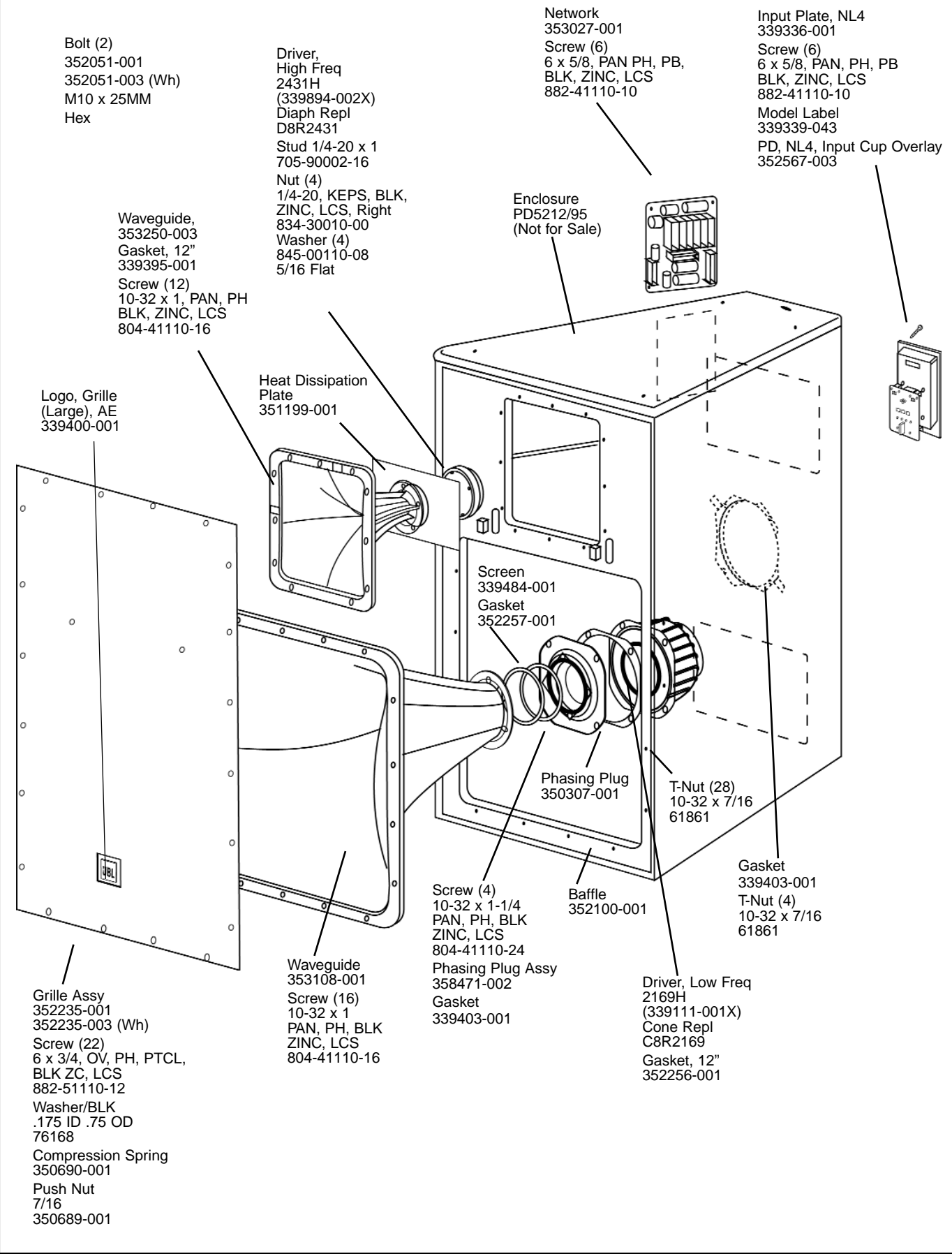


SCHEMATIC (353027-001)



# JBL PD5200/43-WH

## COMPONENT EXPLODED VIEW



Bolt (2)  
352051-001  
352051-003 (Wh)  
M10 x 25MM  
Hex

Driver,  
High Freq  
2431H  
(339894-002X)  
Diaph Repl  
D8R2431  
Stud 1/4-20 x 1  
705-90002-16  
Nut (4)  
1/4-20, KEPS, BLK,  
ZINC, LCS, Right  
834-30010-00  
Washer (4)  
845-00110-08  
5/16 Flat

Network  
353027-001  
Screw (6)  
6 x 5/8, PAN PH, PB,  
BLK, ZINC, LCS  
882-41110-10

Input Plate, NL4  
339336-001  
Screw (6)  
6 x 5/8, PAN, PH, PB  
BLK, ZINC, LCS  
882-41110-10  
Model Label  
339339-043  
PD, NL4, Input Cup Overlay  
352567-003

Waveguide,  
353250-003  
Gasket, 12"  
339395-001  
Screw (12)  
10-32 x 1, PAN, PH  
BLK, ZINC, LCS  
804-41110-16

Enclosure  
PD5212/95  
(Not for Sale)

Logo, Grille  
(Large), AE  
339400-001

Heat Dissipation  
Plate  
351199-001

Screen  
339484-001  
Gasket  
352257-001

Phasing Plug  
350307-001

T-Nut (28)  
10-32 x 7/16  
61861

Screw (4)  
10-32 x 1-1/4  
PAN, PH, BLK  
ZINC, LCS  
804-41110-24

Baffle  
352100-001

Gasket  
339403-001  
T-Nut (4)  
10-32 x 7/16  
61861

Grille Assy  
352235-001  
352235-003 (Wh)  
Screw (22)  
6 x 3/4, OV, PH, PTCL,  
BLK ZC, LCS  
882-51110-12  
Washer/BLK  
.175 ID .75 OD  
76168  
Compression Spring  
350690-001  
Push Nut  
7/16  
350689-001

Waveguide  
353108-001  
Screw (16)  
10-32 x 1  
PAN, PH, BLK  
ZINC, LCS  
804-41110-16

Phasing Plug Assy  
358471-002  
Gasket  
339403-001

Driver, Low Freq  
2169H  
(339111-001X)  
Cone Repl  
C8R2169  
Gasket, 12"  
352256-001

JBL JBL PD5200/43-WH