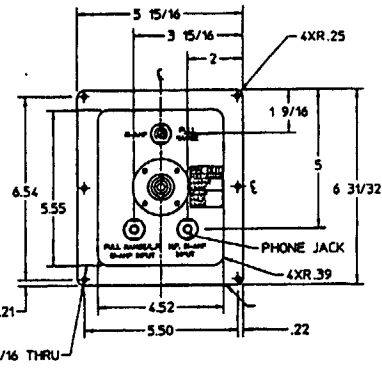
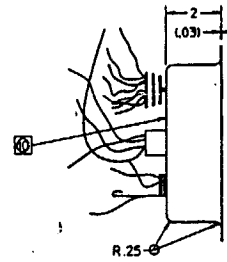
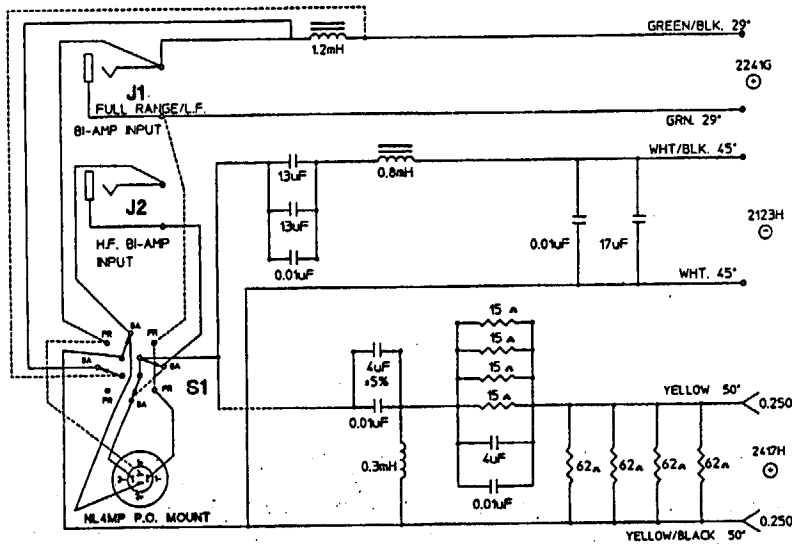


THESE DRAWINGS AND SPECIFICATIONS ARE THE PROPERTY OF HARMAN SPEAKER MANUFACTURING COMPANY. THEY ARE HEREBY LOANED TO YOU FOR YOUR USE IN THE MANUFACTURE, CONTROL, OR USE AS THE BASIS FOR MANUFACTURE IN SALE OF APPROPRIATE WITHOUT WRITTEN PERMISSION.

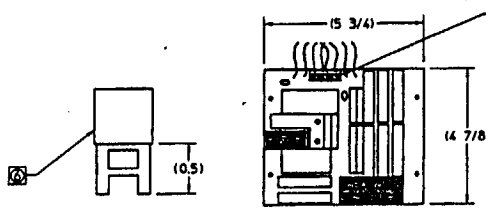
PART NO.	REV	DESCRIPTION	REMARKS
75966	B	NETWORK ASSY	SR4738A
75966-01	B	P.C.B.	SR4738A
75966-02	B	TERMINAL CUP	SR4738A

CHG	BY	DESCRIPTION	DATE	APP'D	DATE
F-1117	A	RELEASE FOR PRODUCTION		PME	DMR/5/2/93
541T	B	ADDED NOTE 12, 10.8mH, 0.01uF TO NOTE 8 AND +5% TO 4uF		VAL	

NSR4738A



75966-02
TERMINAL CUP



75966-01
P.C. BOARD

12. ALL INDUCTORS TO BE SECURED IN PLACE WITH WIRE TIE AND RTV (SILICONE) UNDER BOBBIN SUPPORT. RTV NOT TO CONTACT WIRE WHERE POSSIBLE.
11. WIRES FROM P.C.B. TO TERM CUP TO BE 24".
- ⊗ STAMP JBL P/N 75976 ON CUP WHERE SHOWN.
- ⊗ MUST BE KEYPED CONNECTOR (CAN ONLY BE CONNECTED ONE WAY).
8. INDUCTORS: ± 5% @ 1 KHZ, DCR < 0.25 OHMS, SATURATION 7A MIN, HYSTERESIS ± 2%
0.8 mH TO BE U-CORE TYPE OR ENGINEERING APPROVED EQUIVALENT.
7. CAPACITORS: 0.01uF ± 10% @ 1 KHZ, D.F. < 2%, 200V POLYPROPYLENE
ALL OTHERS ± 10% (UNLESS NOTED DIFFERENTLY) @ 1 KHZ, D.F. < 2%, 200V MYLAR
- ⊗ RESISTORS: 10 WATT, NO RTV REQUIRED BETWEEN RESISTORS (MUST BE TWO LEG/FOUR PIN TYPE)
5. NEUTRICK: NL4MP P.C. MOUNT VERSION OF 4 PIN NEUTRICK CONNECTOR (AIR TIGHT)
4. S1 TO BE TWO POSITION ROTARY SWITCH (ON-ON) WIRED FOR 6A MINIMUM RATING BY PARALLELING ONE SWITCH SECTION TOGETHER AS SHOWN.
BA= BI-AMP MODE
FR= FULL RANGE MODE
3. PHONE JACK (1/4" SWITCHCRAFT) TO BE INSULATED FROM TERMINAL CUP. (J1 & J2)
2. TERMINAL CUP TO BE 0.8MM THK STEEL, POWDERCOATED BLACK.
1. TERMINAL CUP SIMILAR IN SIZE ONLY, TO PART NO. 69691-XX.
- ⊙ OUTWARD CONE MOVEMENT WITH POSITIVE VOLTAGE TO RED INPUT TERMINAL.
- ⊙ INWARD CONE MOVEMENT WITH POSITIVE VOLTAGE TO RED INPUT TERMINAL.

NOTES: (UNLESS OTHERWISE SPECIFIED)

QTY	ITEM	PART NO.	PART/MATERIAL	REMARKS
BILL OF MATERIAL				
HARMAN SPEAKER MANUFACTURING		HARMAN SPEAKER MANUFACTURING		
12000 W. 10th St.		12000 W. 10th St.		
DENVER, CO 80202		DENVER, CO 80202		
TOLERANCES UNLESS OTHERWISE SPECIFIED:		TOLERANCES UNLESS OTHERWISE SPECIFIED:		
SIZE	FINISH	DATE	BY	REV
1/16" ± .001	AS MANUFACTURED	5/2/93	D. RIVERA	
1/32" ± .001	AS MANUFACTURED			
1/64" ± .001	AS MANUFACTURED			
ALL DIMENSIONS ARE PERFORMED UNLESS OTHERWISE SPECIFIED	SR4738A			
DATE	BY	DATE	BY	REV
NONE		1 of 1		

8 13 7 17 8 15 61 115 417 13 31 110 121 12 11