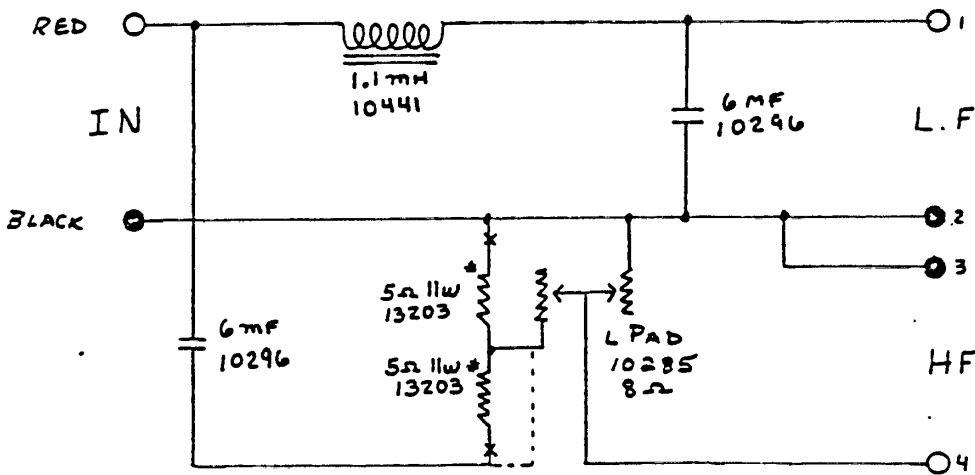


SPECIFICATIONS: NOTE ①

LOAD Z	LOW PASS	CROSS OVER	HIGH PASS	ATTENUATION
	1 KHZ	3.2 KHZ	5 KHZ	
8	LF -1 HF -17.5	LF -10.5 HF -10.5	LF -17 HF -9	HF VAR

CIRCUIT:



NOTES:

- ① USE STANDARD TEST FIXTURE
- ② REVISED BY ADDING RESISTORS (*) TO PROVIDE 8.5dB ATTENUATION TO H.F. OUTPUT TO REDUCE POSSIBILITY OF OVERDRIVING OTS, DOTTED LINE SHOWS EARLY CONFIGURATION, RETROFIT IS MANDATORY!