

4

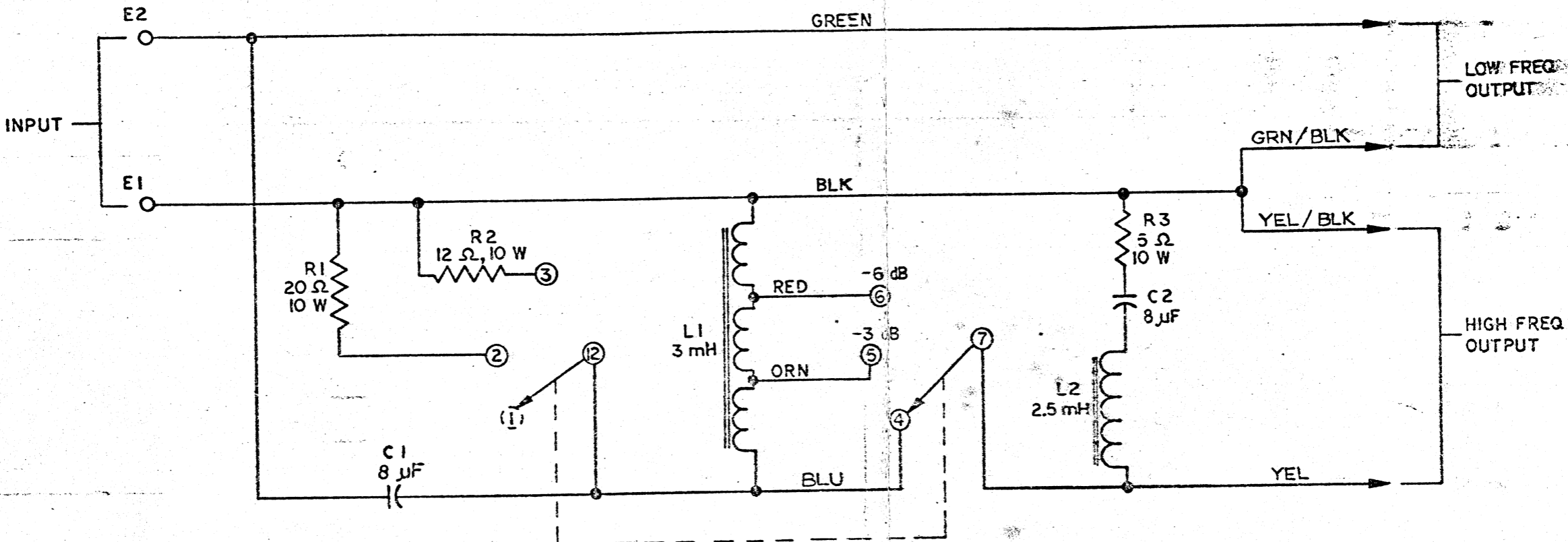
3

2

THESE DRAWINGS AND SPECIFICATIONS ARE THE PROPERTY OF JAMES B. LANSING SOUND INC. THEY ARE ISSUED IN STRICT CONFIDENCE AND SHALL NOT BE REPRODUCED, COPIED, OR USED AS THE BASIS FOR MANUFACTURE OR SALE OF APPARATUS WITHOUT WRITTEN PERMISSION.

REVISIONS						
CHG	LTR	DESCRIPTION	DRFT	CHK	DATE	APPR
925B	G	REVISED & REDRAWN	GS	ajy	7 APR 78	llb

**NOTICE**  
 THE FOLLOWING DCR'S ARE OUTSTANDING AGAINST THIS DRAWING.



11640

1. FOR WIRING DIAGRAM SEE DWG 12680.  
 NOTES: (UNLESS OTHERWISE SPECIFIED.)

ITEM	PART NO.	DESCRIPTION	QTY	REMARKS
<b>BILL OF MATERIAL</b>				
UNLESS OTHERWISE SPECIFIED DIMENSIONS ARE IN MILLIMETRES WITH INCH-SIZES IN BRACKETS. BREAK SHARP EDGES 0.4 mm (0.016 inch).		MATERIAL	DRAWN 3-MAR-78 <i>David Mauduca</i>	
TOLERANCES (UNLESS OTHERWISE SPECIFIED)		FINISH	CHECKED 3 APR 78 <i>Allen Symonik</i>	
DECIMALS =		MODELS USED ON	DESIGN	
X.XXX ± 0.13 (0.005 inch)		LX8	ENGR 6 Apr 78 <i>Greg Tumber</i>	
X.XX ± 0.25 (0.010 inch)			APPR 7 APR 78 <i>James B. Lansing</i>	
X.X ± 0.5 (0.020 inch)			TITLE	
FRACTIONAL U.S. DIMENSIONS = 1/32			SCHEMATIC, LX8	
ALL DIMENSIONS ARE FINISHED DIMENSIONS			SIZE	DRAWING NO.
DO NOT SCALE DRAWING			A2	11640
			SCALE	SHEET OF
				G

4

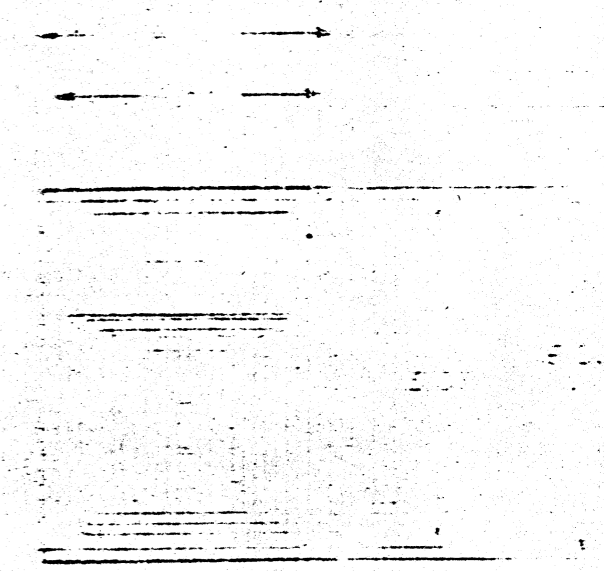
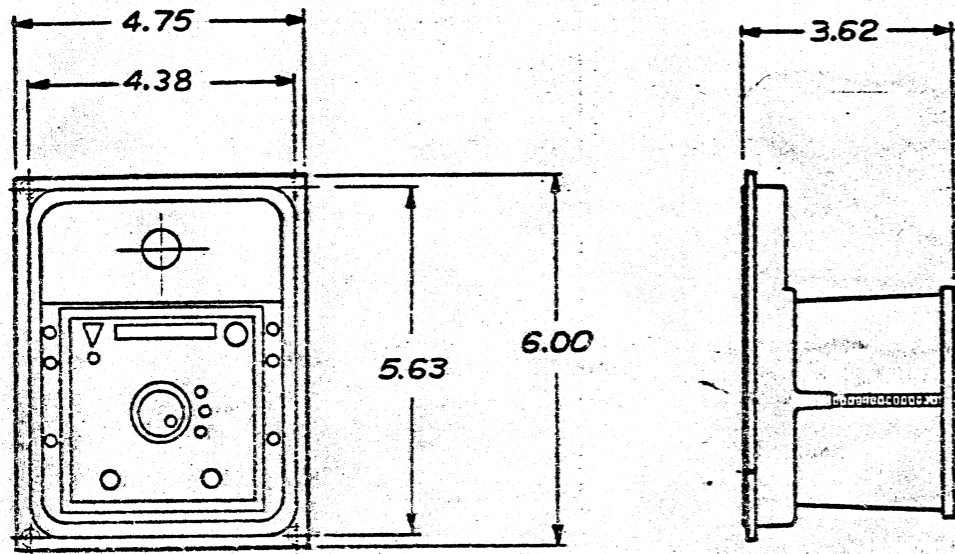
3

2

1

**NOTICE**

THE FOLLOWING  
DCR'S ARE  
OUTSTANDING  
AGAINST THIS  
DRAWING.



ITEM	PART NUMBER	DESCRIPTION	QTY	REMARKS
7	57329	CARTON	1	MRD 47303
6	12867	PAD, FILLER	2	
5	10455	TUBE, CARTON	1	
4				
3	50766	WARRANTY STATEMENT	1	
2	57546	INSTALLATION KIT	1	MRD 55344
1	12680	MFD. ITEM/WIRING DIAGRAM-LX8	1	

SEE DRAWING 57479 FOR PACKING INSTRUCTIONS.

NOTES: (UNLESS OTHERWISE SPECIFIED)

REVISIONS	UNLESS OTHERWISE SPECIFIED DIMENSIONS ARE IN INCHES	DRAWN BY	DATE
	BREAK SHARP EDGES 0.015	CHECKED BY	DATE
	DECIMALS XXX.XX	FRACTIONS X/XXX.XX	ANGULAR X/XXX.XX
	TIE	SCALE	ENGR.
	TREATMENT	SIZE	DRAWING NUMBER
	MACHINE FINISH V	SCALE NONE	KEY
	DO NOT SCALE DRAWING	WEIGHT	SHEET 1 of 1

SALES MODEL, LX 8

11814

APPR / 5.2.77

REVISIONS  
1. M. DELETED W/IN 5014 INST. MARCH 1977  
2. M. REVISED & REDRAWN