

4

3

2

1

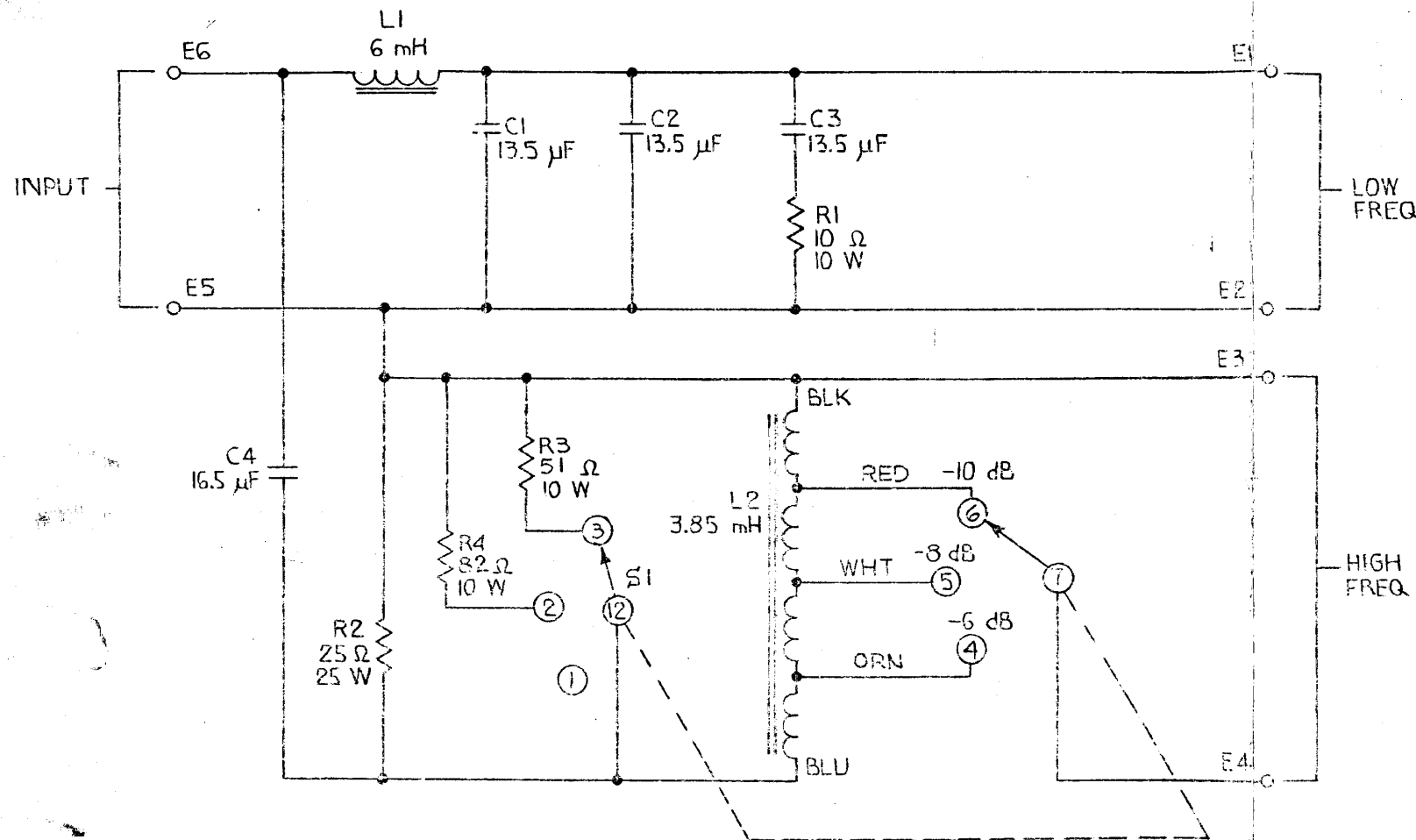
THESE DRAWINGS AND SPECIFICATIONS ARE THE PROPERTY OF JAMES B. LANSING SOUND INC. THEY ARE ISSUED IN STRICT CONFIDENCE AND SHALL NOT BE REPRODUCED, COPIED, OR USED AS THE BASIS FOR MANUFACTURE OR SALE OF APPARATUS WITHOUT WRITTEN PERMISSION.

NOTICE

THE FOLLOWING DCR'S ARE OUTSTANDING AGAINST THIS DRAWING.

REVISIONS

CHG	LTR	DESCRIPTION	DRFT	CHK	DATE	APPR
913B	C	REVISED & REDRAWN	GE	Ruth Sagi	7/20/78	[Signature]
623D	D	REV RESISTOR @ R 3 & 4	DAM	Simon	6/17/80	[Signature]



11126

ITEM	PART NO.	DESCRIPTION	QTY	REMARKS
BILL OF MATERIAL				
UNLESS OTHERWISE SPECIFIED DIMENSIONS ARE IN MILLIMETRES WITH INCHES IN BRACKETS. BREAK SHARP EDGES 0.4 mm (0.016 inch)		MATERIAL	DRAWN BY MHR 78 <i>Ruth Sagi</i>	
TOLERANCES (UNLESS OTHERWISE SPECIFIED)		FINISH	CHECKED 23 MAR 78 <i>William W. Schmidt</i>	
DECIMALS		MODELS USED ON	DESIGN	
X.XXX = 0.13 (.005 inch)		LX5	ENCN 6/17/78 <i>Simon</i>	
X.XX = 0.25 (.010 inch)			APPR	
X.X = 0.5 (.020 inch)				
FRACTIONAL U.S. DIMENSIONS = 1/32				
ALL DIMENSIONS ARE FINISHED DIMENSIONS				
DO NOT SCALE DRAWING				
TITLE			SIZE	DRAWING NO.
SCHEMATIC - LX5			A2	11126
			SHEET	OF

1. FOR WIRING DIAGRAM SEE DWG. 10374.
NOTES: (UNLESS OTHERWISE SPECIFIED)

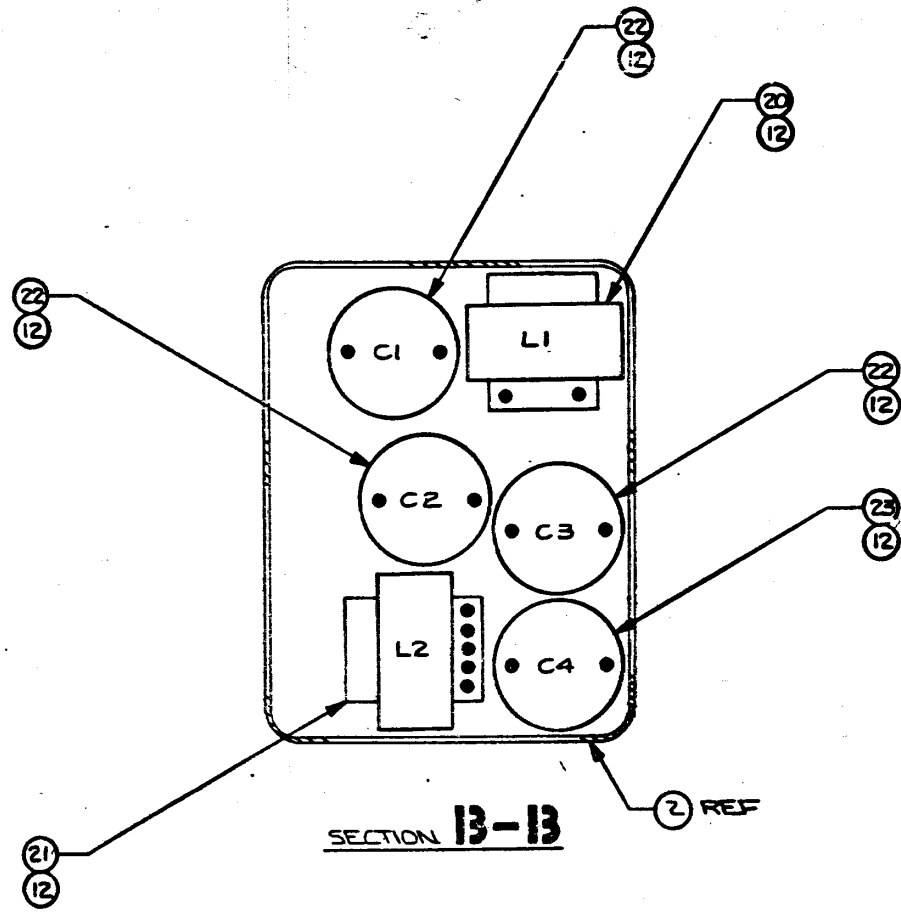
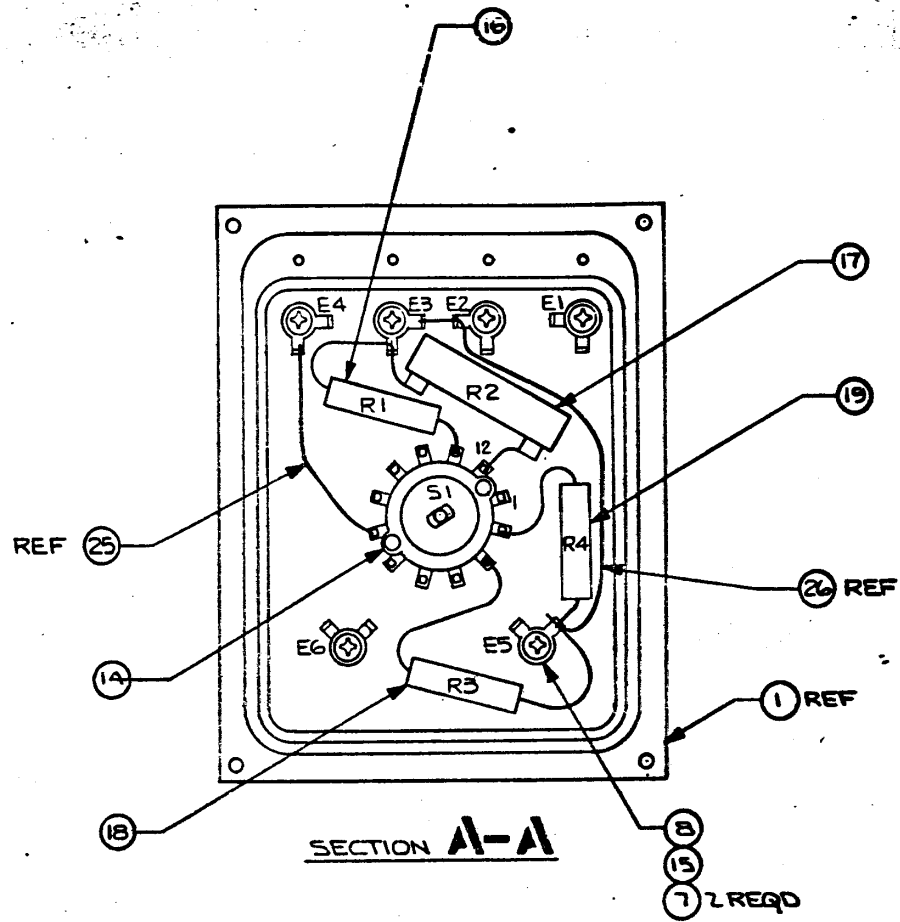
4

3

2

1

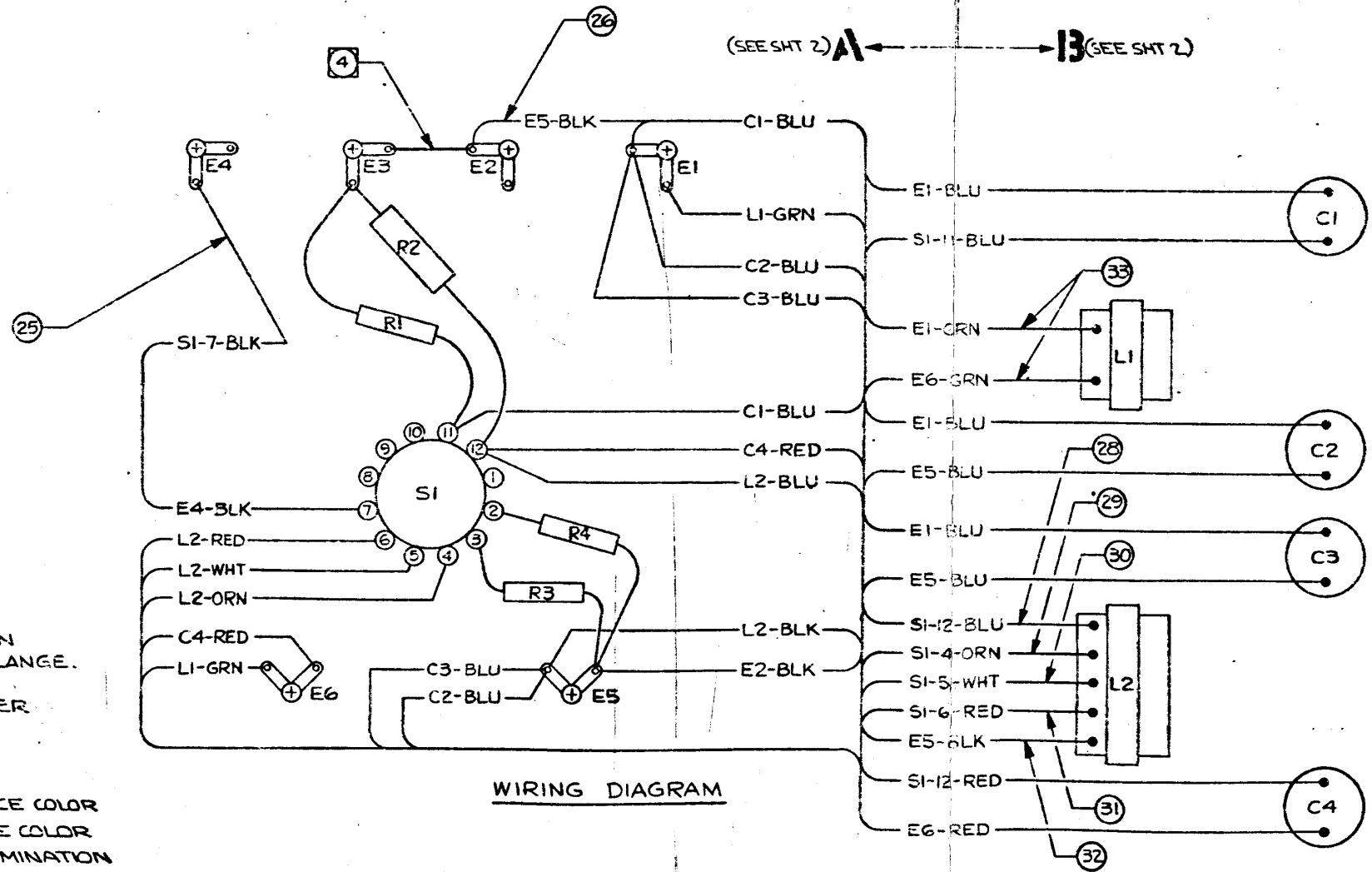
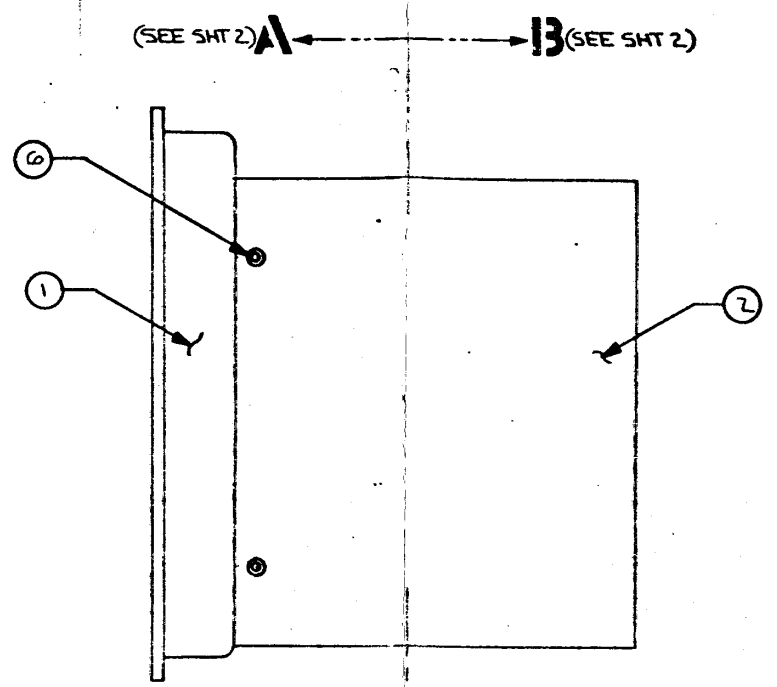
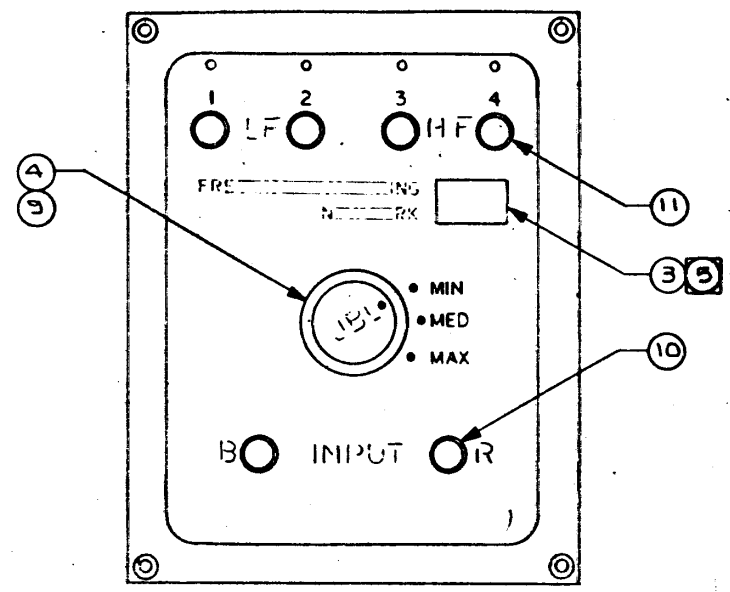
THESE DRAWINGS AND SPECIFICATIONS ARE THE PROPERTY OF JAMES B. LAMSON SOUND INC. THEY ARE ISSUED IN STRICT CONFIDENCE AND SHALL NOT BE REPRODUCED, COPIED, OR USED AS THE BASIS FOR MANUFACTURE OR SALE OF APPARATUS WITHOUT PERMISSION.



UNLESS OTHERWISE SPECIFIED DIMENSIONS ARE IN INCHES. BREAK SHARP EDGES 015				DRAWN: [Signature]		CHECK: [Signature]		DESIGN: [Signature]		ENGR: [Signature]		APPR: [Signature]		SCALE: NONE		WEIGHT: [Blank]		SHEET 2 OF 2			
REV		DATE		BY		APP		MATERIAL		TREATMENT		MACHINE FINISH: V		DO NOT SCALE DRAWING		SIZE D		DRAWING NUMBER 10374		REV L	
SEE SHY 1																					
QTY		MODEL		HEET		DWG		II													

THESE DIMENSIONS AND SPECIFICATIONS ARE THE PROPERTY OF JAMES B. LANSING SOUND INC. THEY ARE HELD IN STRICT CONFIDENCE AND SHALL NOT BE REPRODUCED, COPIED, OR USED AS THE BASIS FOR MANUFACTURE OR SALE OF APPARATUS WITHOUT PERMISSION.

NOTICE
THE FOLLOWING
DCR'S ARE
OUTSTANDING
AGAINST THIS
DRAWING.



WIRING DIAGRAM

5 CENTRALIZE FOILCAL ON RAISED SURFACE OF FLANGE.
4 USING ITEM 26, JUMPER E2 AND E3.
3. WIRE IDENT. CODE:
TBI-1-GRN/BLK
TRACE COLOR
WIRE COLOR
TERMINATION
DESTINATION

2. FOR ENGINEERING SPEC. SEE E.D.S 10043.
1. FOR SCHEMATIC SEE DWG. 11126.
NOTES: (UNLESS OTHERWISE SPECIFIED)

ITEM	PART NUMBER	DESCRIPTION	QTY	REMARKS
33	103515	SLEEVING, NO.14, GRN	1	14 IN TOTAL
32	103255	SLEEVING, NO.14, BLK	1	7 IN TOTAL
31	103265	SLEEVING, NO.12, RED	1	7 IN TOTAL
30	103525	SLEEVING, NO.12, WHT	1	7 IN TOTAL
29	103535	SLEEVING, NO.12, ORN	1	7 IN TOTAL
28	103235	SLEEVING NO 14, BLU	1	7 IN TOTAL
27				
26	56621	WIRE, STRANDED-BLK, 18 AWG	1	6 IN. MRD 56863
25	10298	WIRE, SOLID-BLK, 20 AWG	1	2 1/2 IN.
24				
23	10358	CAPACITOR, 16.5 μF	1	C4
22	10359	CAPACITOR, 13.5 μF	3	C1, C2, C3
21	55030-03R85	INDUCTANCE COIL, 3.85 mH	1	L2
20	55029-06R0	INDUCTANCE COIL, 6 mH	1	L1
19	34753	RESISTOR, 62 Ω, 10 W	1	MRD 35491 R4
18	34752	RESISTOR, 51 Ω, 10 W	1	MRD 35491 R3
17	10368	RESISTOR, 25 Ω, 25 W	1	R2
16	34751	RESISTOR, 10 Ω, 10 W	1	MRD 35491 R1
15	10241	SOLDER LUG - "Y" TYPE	6	
14	57559	SWITCH, ROTARY-3 POSITION	1	SI
13				
12	65684	ADHESIVE	.005	
11	33751	BINDING POST, BLACK	5	E1 THRU E5
10	33750	BINDING POST, RED	1	E6
9	12961	SET SCREW, 6-32 X 1/4	1	
8	10811	SCREW, PN.HD. 6-32 X 3/8	6	
7	10817	WASHER, INSULATING # 6	12	
6	53672	RIVET	4	
5				
4	10293	KNOB	1	MRD47178
3	10373	FOILCAL	1	
2	10357	NETWORK CONTAINER	1	MRD47171
1	10365	FLANGE, MOUNTING	1	MRD47175
ITEM	PART NUMBER	DESCRIPTION	QTY	REMARKS

BILL OF MATERIAL

REV. P	REV. PINS ON ITEMS 20, 21, 22, 23, 24	DATE	12-8-77
REV. N	65084 WAS 81961 S.M. 2/2	DATE	
REV. M		DATE	
REV. L		DATE	
REV. K	REV. RESISTOR C. ITEM 15 & 19	DATE	
REV. J	REV. E. REDRAWN	DATE	
REV. I		DATE	
REV. H		DATE	
REV. G		DATE	
REV. F		DATE	
REV. E		DATE	
REV. D		DATE	
REV. C		DATE	
REV. B		DATE	
REV. A		DATE	

UNLESS OTHERWISE SPECIFIED DIMENSIONS ARE IN INCHES. BREAK SHARP EDGES 0.015	DRAWN BY: JLB	CHECKED BY: JLB
DECIMALS: .01 .005 .0025 .00125 FRACTIONS: 1/16 1/8 1/4 3/8 1/2 5/8 3/4 7/8 ANGULAR: 15 30 45 60 75 90 105 120 135 150 165 180	DESIGN: JLB	DATE: 12-8-77
TIT: LX5	MATERIAL: V	TREATMENT: V
QTY: 1	MODEL: 10374	APP: JLB
SCALE: NONE	WGT: 1.0	REV: 1
DO NOT SCALE DRAWING		