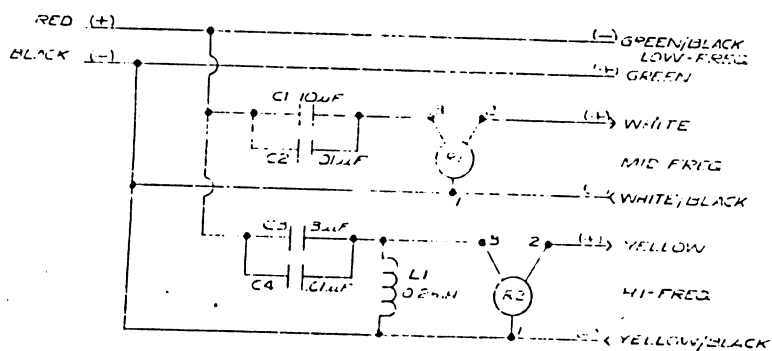
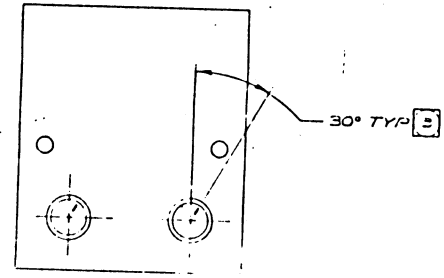
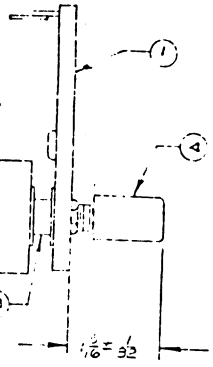
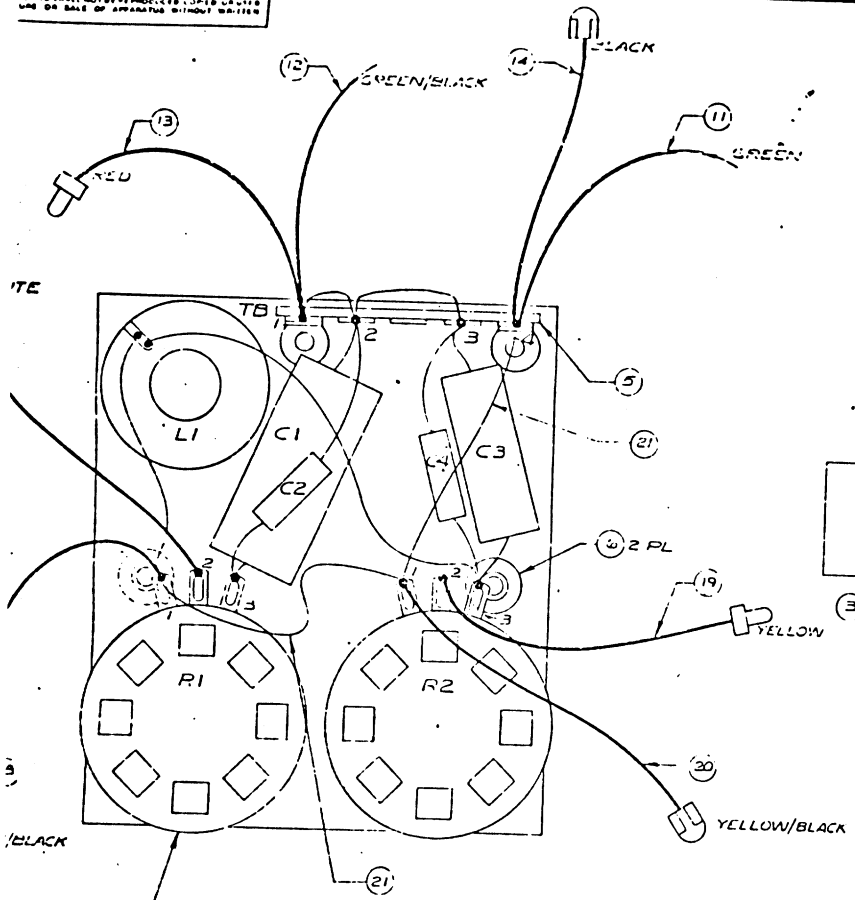


STANDARD AND THE PROPERTY OF JBL. NO PARTS OF THIS DRAWING ARE TO BE REPRODUCED, COPIED, LOANED, LENT, OR SAID OR SALE OF APPROVED WITHOUT WRITTEN

6 5 4 3 2 1

REVISIONS						
CHG	LIB	DESCRIPTION	DRFT	CHK	DATE	APPR
A					1-27-66	
B		ITEM 4 W/ 2 PL			3-10-66	
C		SEC DER			5-11-66	



SCHEMATIC G.63324-01

L-PADS SUCH THAT TERMINALS CLEAR ED RIVET HOLES.  
 INSTALLING ITEM 4 TURN SHAFT OF ITEM 2 COUNTERCLOCKWISE AND INSTALL IN POSITION SHOWN.  
 VIS 5, 7, 8, & 10 TO ITEM 1 USING ITEM 15.  
 LIST SEE DRAWING G.6324-02.  
 VISE SPECIFIED)

3112D

21	11872	WIRE 22 GA BLACK	2	EA.
20	57173-54	WIRE/CONN ASSY (YEL/BLK)	1	FEMALE
19	57173-53	WIRE/CONN ASSY (YEL)	1	MALE
18	57173-32	WIRE/CONN ASSY (WHT/BLK)	1	FEMALE
17	57173-51	WIRE/CONN ASSY (WHT)	1	MALE
16	294745	SOLDER		.0005
15	355694	JETMELT		.01
14	57173-66	WIRE 18 AWG BLACK	1.5	FT
13	57173-65	WIRE 18 AWG RED	1.5	FT
12	56649	WIRE 18 AWG GRN/BLACK	2	FT
11	56616	WIRE 18 AWG GRN	2	FT
10	62029-02	INDUCTOR 2mH	1	LI
9	61098	CAPACITOR 0.1uF	2	C2, C4
8	5590-0300	CAPACITOR 3uF	1	C3
7	50992-0K0	CAPACITOR 10uF	1	C1
6	51204	THREADED RIVET	2	
5	53498	TERMINAL STRIP	1	TB
4	52908	KNOB	2	
3	57814	SPACER	2	.250 THK
2	10285	L-PAD 8 OHM	2	R1, R2
1	57059	MOUNTING BOARD	1	

ITEM	PART NO.	DESCRIPTION	QTY	REMARKS
BILL OF MATERIAL				
UNLESS OTHERWISE SPECIFIED DIMENSIONS ARE IN INCHES				
FRACTIONAL DIMENSIONS TO 1/32				
TOLERANCES UNLESS OTHERWISE SPECIFIED ANGULAR				
FRACTIONAL DIMENSIONS TO 1/32				
ALL DIMENSIONS ARE FINISHED DIMENSIONS				
DO NOT SCALE DRAWING				
MATERIAL		DATE		
FINISH		CHECKED		
MATERIAL CODE		DATE		
FRACTIONAL DIMENSIONS TO 1/32		DATE		
ALL DIMENSIONS ARE FINISHED DIMENSIONS		DATE		
DO NOT SCALE DRAWING		DATE		
JBL Incorporated		JBL Incorporated		
A Harman International Company		A Harman International Company		
Northridge California 91329 USA		Northridge California 91329 USA		
MFD ITEM 3112D		MFD ITEM 3112D		
D		D		
66324		66324		