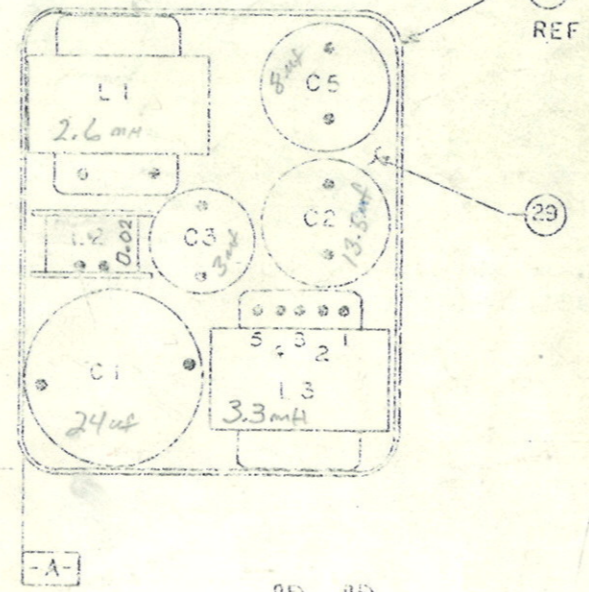
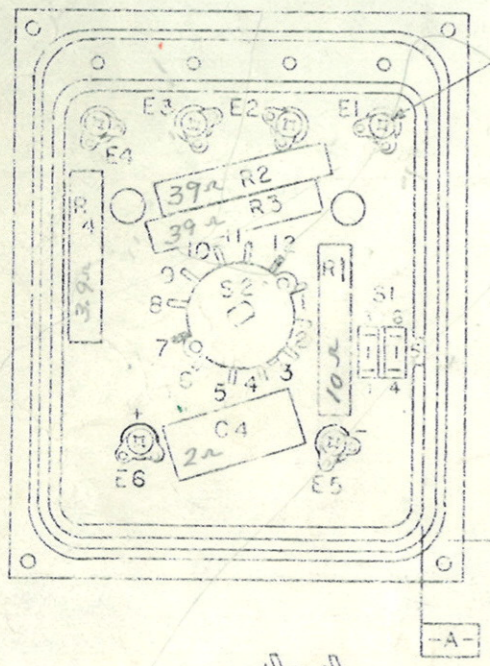
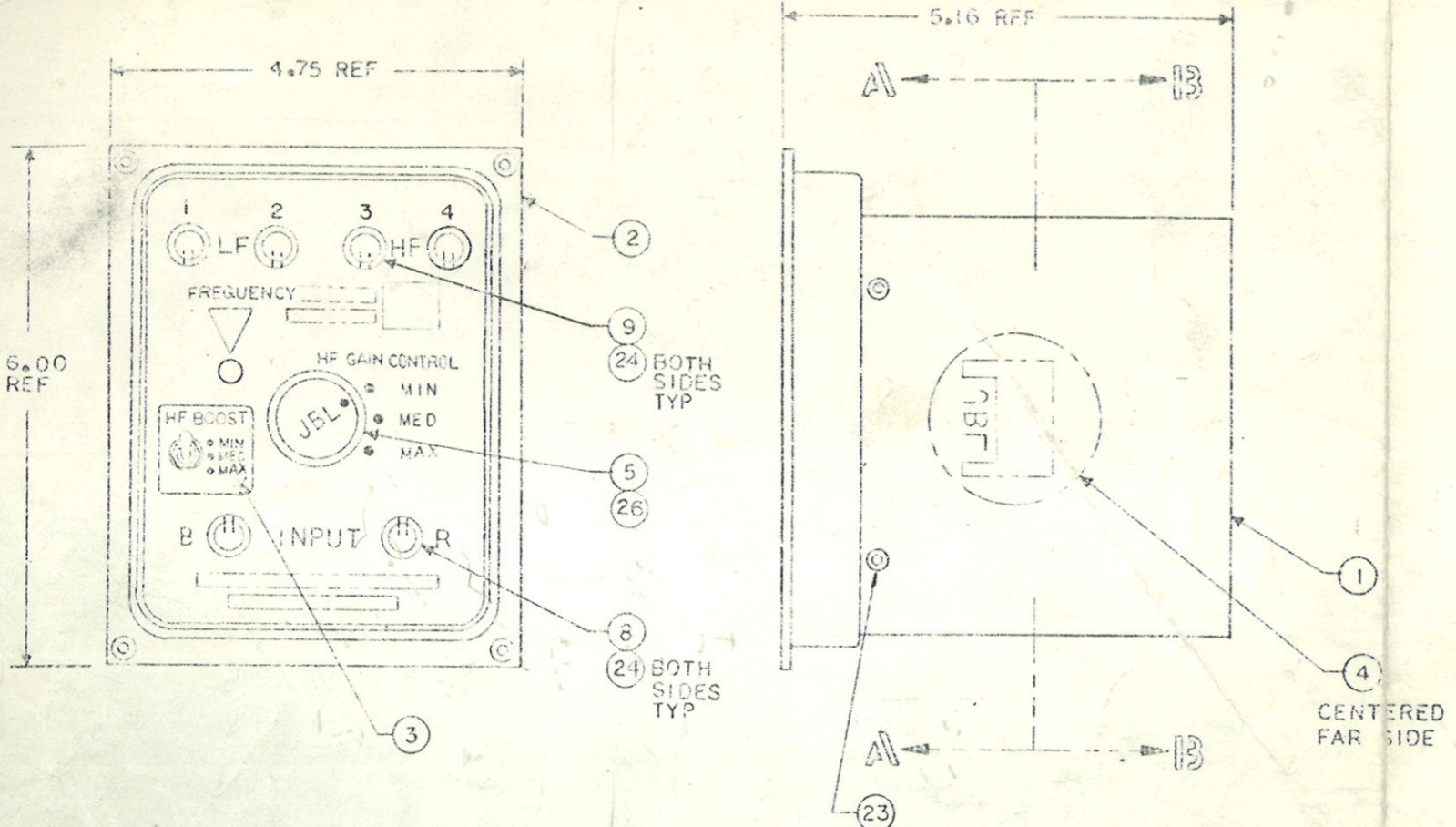


THIS DRAWING AND SPECIFICATIONS ARE THE PROPERTY OF JAMES B. LANGRISH SOUNDING. ANY REPRODUCTION IN WHOLE OR IN PART WITHOUT WRITTEN PERMISSION IS PROHIBITED. THIS DRAWING IS NOT TO BE REPRODUCED FOR THE BASIS FOR MANUFACTURE OR SALE OF APPARATUS WITHOUT WRITTEN PERMISSION.



REVISIONS						
CHG	LTR	DESCRIPTION	DRFT	CHK	DATE	APPR
NO259	A	REL FOR PRODUCTION	JR	WJ	11/11/52	DLS
600G	B	55030-03R3 WAS 62627 55029-02R6 WAS 62624	S.H.	WJ		
7336	C	65959-10 WAS 62619	B.A.	WJ	12/16/52	
102H	D	ADD 55555 IN NOTE 5, 30194 WAS 53672	M.V.	WJ		

31	35353 S	CABLE TIE	4	
30	48679	WIRE, 22 AWG, BLK (18800)	3	22" TOTAL (4)
29	61961	ADHESIVE	A/R	
28	20436S	SOLDER	A/R	
27	10241	SOLDER LUG	6	
26	12961	SCREW, 6-32 X 1/4 SET	1	
25	10811	SCREW, 6-32 X 3/8 PNH	6	
24	10817	WASHER, INSULATING	12	
23	38494	RIVET	4	
22	10809S	WIRE, 22 AWG BUS	1	1/2" TOTAL (4)
21	62772-08R0	CAPACITOR - 8 μF	1	C5 Grn
20	60990-02R0	↑ 2 μF	1	C4
19	62772-03R0	↓ 3 μF	1	C3 OR
18	62772-13R5	↓ 13.5 μF	1	C2 Blk
17	62772-0240	CAPACITOR - 24 μF	1	C1
16	11034S	SLEEVING, 18 AWG BLK	1	1/4" TOTAL (4)
15	60791-0390	RESISTOR - 39 Ω	2	R2, 3
14	34751	RESISTOR - 10 Ω	1	R1 (35491)
13	60791-0399	RESISTOR - 3.9 Ω	1	R4
12	55030-03R3	INDUCTOR - 3.3 mH	1	L3
11	62629-01	INDUCTOR - 0.02 mH	1	L2
10	55029-02R6	INDUCTOR - 2.6 mH	1	L1
9	33751	BINDING POST, BLACK	3	E2, 3, 5
8	33750	BINDING POST, RED	3	E1, 4, 6
7	62622	SWITCH, TOGGLE, DP3P	1	S1
6	57559	SWITCH, ROTARY, 3 POS	1	S2
5	10295	KNOB (BLK)	1	(4/178)
4	65959-10	FOILCAL, 3110 A	1	(35434)
3	62617	OVERLAY	1	
2	62618	FLANGE (BLK)	1	
1	10357	CONTAINER, NETWORK (BLK)	1	(47171)

5. ADD 4 CABLE TIES & DRESS WIRES PER MANUFACTURING ASSY STANDARD.
- (4) QTY FOR LISTED BULK MAT'L IS NO. OF PIECES FROM LENGTH INDICATED.
3. WIRE ENTRY HOLES OF ITEMS 8 & 9 ALL FACE VERTICALLY TOWARD KNOB.
2. SWITCHES SUPPLIED WITH MOUNTING HARDWARE.
1. REF DWG: SCHEMATIC 62614-01; WIRE LIST 62614-02.

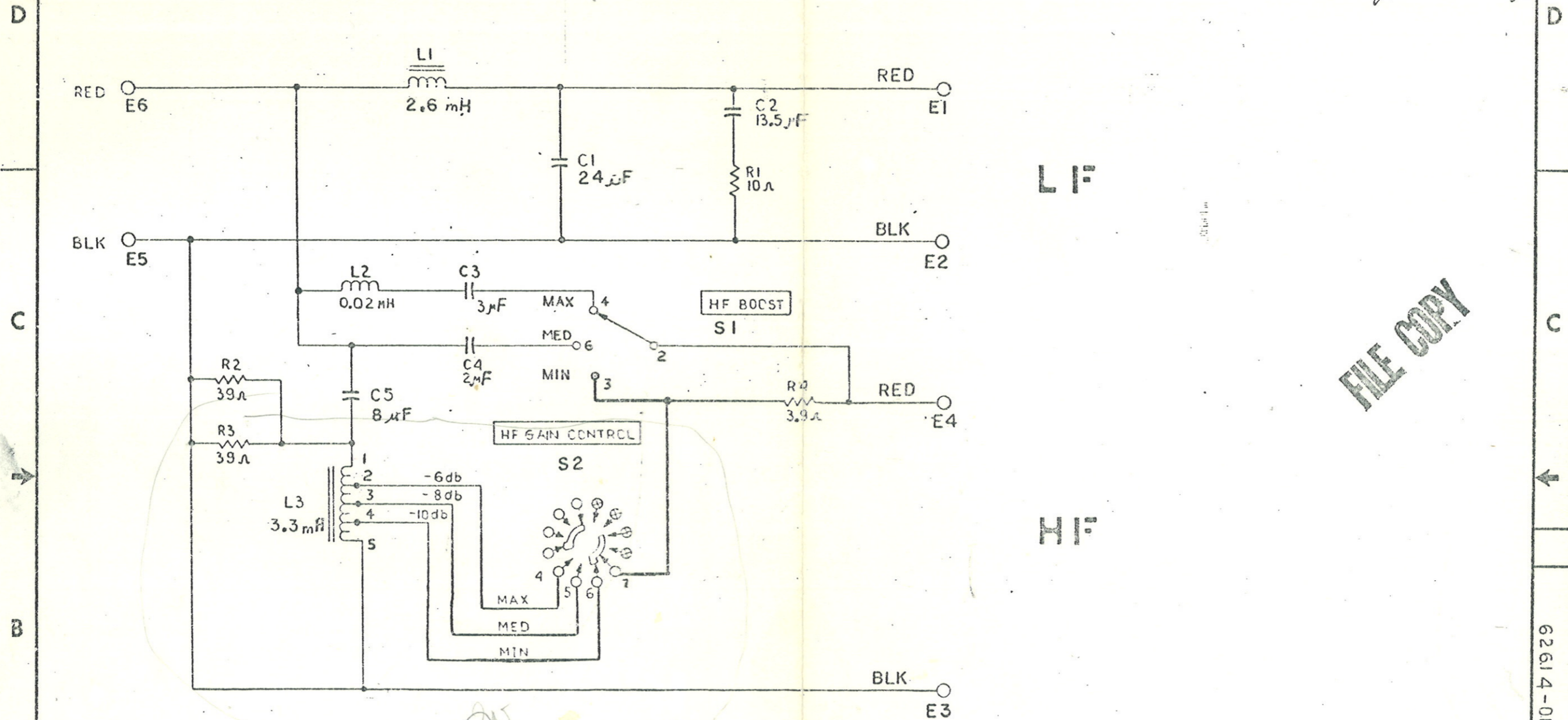
NOTES: (UNLESS OTHERWISE SPECIFIED)

BILL OF MATERIAL			
ITEM	PART NO.	DESCRIPTION	QTY
1	10357	CONTAINER, NETWORK (BLK)	1
2	62618	FLANGE (BLK)	1
3	62617	OVERLAY	1
4	65959-10	FOILCAL, 3110 A	1
5	10295	KNOB (BLK)	1
6	57559	SWITCH, ROTARY, 3 POS	1
7	62622	SWITCH, TOGGLE, DP3P	1
8	33750	BINDING POST, RED	3
9	33751	BINDING POST, BLACK	3
10	55029-02R6	INDUCTOR - 2.6 mH	1
11	62629-01	INDUCTOR - 0.02 mH	1
12	55030-03R3	INDUCTOR - 3.3 mH	1
13	60791-0399	RESISTOR - 3.9 Ω	1
14	34751	RESISTOR - 10 Ω	1
15	60791-0390	RESISTOR - 39 Ω	2
16	11034S	SLEEVING, 18 AWG BLK	1
17	62772-0240	CAPACITOR - 24 μF	1
18	62772-13R5	↓ 13.5 μF	1
19	62772-03R0	↓ 3 μF	1
20	60990-02R0	↑ 2 μF	1
21	62772-08R0	CAPACITOR - 8 μF	1
22	10809S	WIRE, 22 AWG BUS	1
23	38494	RIVET	4
24	10817	WASHER, INSULATING	12
25	10811	SCREW, 6-32 X 3/8 PNH	6
26	12961	SCREW, 6-32 X 1/4 SET	1
27	10241	SOLDER LUG	6
28	20436S	SOLDER	A/R
29	61961	ADHESIVE	A/R
30	48679	WIRE, 22 AWG, BLK (18800)	3
31	35353 S	CABLE TIE	4

MFD ITEM 3110 A
62614

THESE DRAWINGS AND SPECIFICATIONS ARE THE PROPERTY OF JAMES B. LANSING SOUND INC. THEY ARE ISSUED IN STRICT CONFIDENCE AND SHALL NOT BE REPRODUCED, COPIED OR USED AS THE BASIS FOR MANUFACTURE OR SALE OF APPARATUS WITHOUT WRITTEN PERMISSION.

REVISIONS						
CHG	LTR	DESCRIPTION	DRFT	CHK	DATE	APPR
N-0259	A	RELEASE FOR PRODUCTION	Shur	gjj	11/11/62	DLG gjj



FILE COPY

62614-01

1. CROSSOVER FREQ 800 HZ.
 NOTES: (UNLESS OTHERWISE SPECIFIED)

ITEM	PART NO.	DESCRIPTION	QTY	REMARKS
BILL OF MATERIAL				
<small>UNLESS OTHERWISE SPECIFIED DIMENSIONS ARE IN INCHES - FRACTIONS INCH SIZES DECIMALS SPEAKERS - FRACTIONS INCH SIZES DECIMALS</small> TOLEANCES (UNLESS OTHERWISE SPECIFIED) X.XX ± .005 X.X ± .010 X ± .020 FRACTIONS ± .005 DIMENSIONS ARE FINISHED DIMENSIONS DO NOT SCALE DRAWING		MATERIAL _____ FINISH _____ MODELS USED OR _____	DRAWN _____ CHECKED _____ DESIGNED _____ ENGR _____ APPR _____	JAMES B. LANSING SOUND, INC. American International Company Northridge, California 91329 U.S.A. TITLE: SCHEMATIC, 3110A SIZE: A2 DRAWING NO: 62614-01 REV: A SCALE: _____ SHEET: _____ OF: _____