

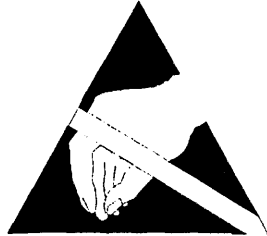
REVISION HISTORY

E.C.N.	REV	DESCRIPTION	DATE	APPROVED			
				DWN	CHK	CM	PE
01N0354	A	RELEASE FOR PRODUCTION	03/27/01	KBZ	<i>[Signature]</i>	<i>[Signature]</i>	<i>[Signature]</i>

UNLESS OTHERWISE SPECIFIED, THIS PRINTED WIRING ASSEMBLY SHALL MEET THE SPECIFICATION DESCRIBED IN IPC-A-610 CLASS 2 STANDARDS.

NOTES:

1. PRINTED WIRING BOARD PART NUMBER 132017-1.
2. ALL LEADS SHALL BE TRIMMED TO 0.093" OR LESS.
3. POSITION COMPONENTS AS SHOWN ON COMPONENT MAPS.
4. THE PRINTED WIRING ASSEMBLY PART NUMBER FOR THIS ASSEMBLY SHALL BE MARKED ON THE PRINTED WIRING BOARD AND SHALL BE PERMANENT.
5. APPLY BAR CODE LABEL (101016-1) AT LOCATION SHOWN ON COMPONENT MAP.



**CAUTION**


STATIC CAN DAMAGE COMPONENTS!

**DO NOT HANDLE**

UNLESS WRIST STRAP IS WORN

THESE DRAWINGS AND SPECIFICATIONS ARE THE PROPERTY OF CROWN INTERNATIONAL, INC. AND SHALL NOT BE REPRODUCED, COPIED, OR USED AS THE BASIS FOR THE MANUFACTURE OR SALE OF APPARATUS OR DEVICES WITHOUT PERMISSION.

**UNCONTROLLED**  
UNLESS OTHERWISE MARKED IN RED INK BY CM AS A CONTROLLED COPY, COPIES OF THESE DOCUMENTS INCLUDING ASSOCIATED ELECTRONIC REPRODUCTIONS ARE FOR REFERENCE ONLY.

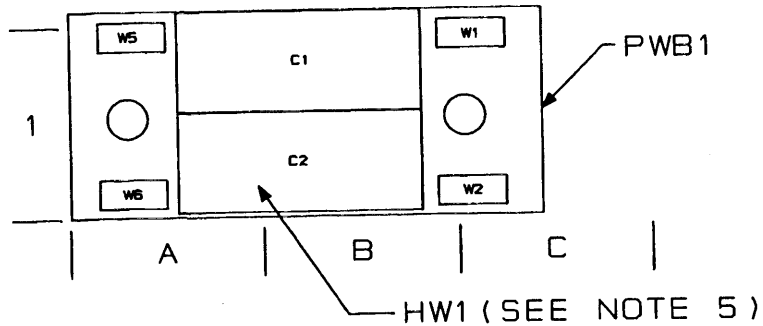
DISTRIBUTION	DWN	KBZ	03/27/01	 <b>CROWN</b> INTERNATIONAL, INC.	1718 W. MISHAWAKA RD. ELKHART IN. 46517 PHONE (219) 294-8000 WWW.CROWNINTL.COM
K	CHK	<i>[Signature]</i>	03/27/01		
FILENAME	CM	<i>[Signature]</i>	3/27/01	TITLE <b>PWA, EMI CAP</b>	
132016-2-A-01.PCB	PE	<i>[Signature]</i>	3/27/01		
TOLERANCE UNLESS OTHERWISE SPECIFIED .00 = ±.02" .000 = ±.010" DRILLS = ±.003"				SIZE	DWG NO.
DO NOT SCALE DRAWING				A	132016-2
SCALE NONE		PROJ NO.	MD45000	SHEET 1 OF 5	
				REV	A





# COMPONENT MAP

## TOP SIDE

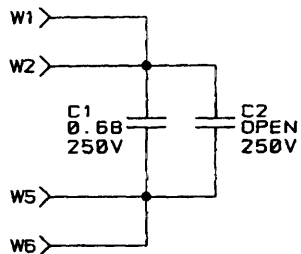


**UNCONTROLLED**

UNLESS OTHERWISE MARKED IN RED INK BY CM AS A CONTROLLED COPY, COPIES OF THESE DOCUMENTS INCLUDING ASSOCIATED ELECTRONIC REPRODUCTIONS ARE FOR REFERENCE ONLY.

THESE DRAWINGS AND SPECIFICATIONS ARE THE PROPERTY OF CROWN INTERNATIONAL, INC. AND SHALL NOT BE REPRODUCED, COPIED, OR USED AS THE BASIS FOR THE MANUFACTURE OR SALE OF APPARATUS OR DEVICES WITHOUT PERMISSION.

SIZE	DWG NO.	132016-2	RE
A			/
SCALE	NONE	PROJ NO. MD450D0	SHEET 4 OF 5



NOTES :  
=====

1. ALL CAPACITORS ARE IN MICROFARADS UNLESS OTHERWISE SPECIFIED.

UNCONTROLLED  
UNLESS OTHERWISE MARKED IN RED INK BY  
CM AS A CONTROLLED COPY. COPIES OF  
EQUIPMENT INCLUDING ASSOCIATED

THESE DRAWINGS AND SPECIFICATIONS ARE  
THE PROPERTY OF CROWN INTERNATIONAL, INC.  
AND SHALL NOT BE REPRODUCED, COPIED, OR  
USED AS THE BASIS FOR THE MANUFACTURE

SIZE DWG NO.

A

132016-2

REV

A