

MPC X100 100Hz CROSSOVER

WP-000065-00 PCB ASSY, 100HZ CROSSOVER

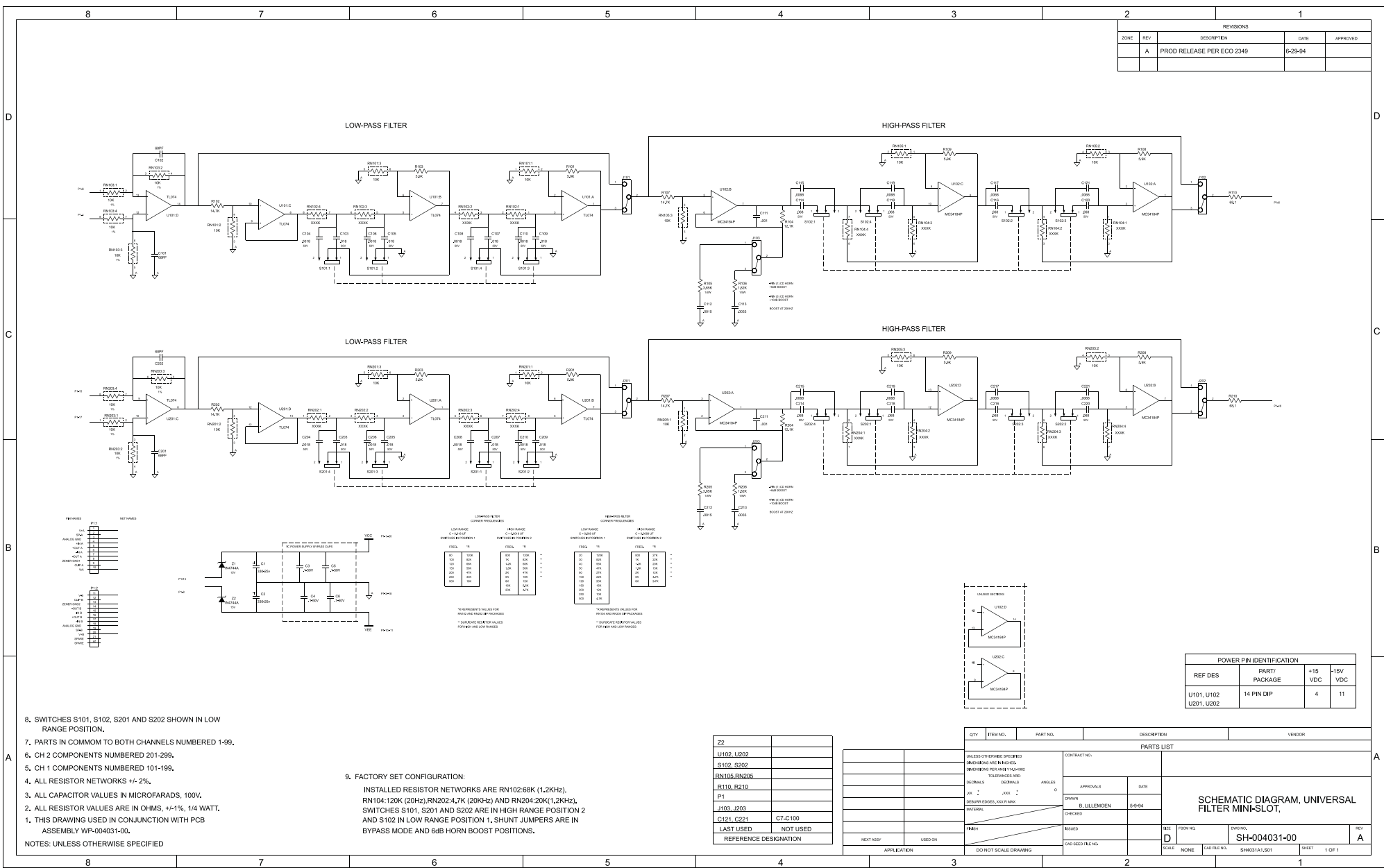
Part Number	Description	Reference
CA-068001-10	CAP CER 68PF 10% 100V	C101,102, C201,202
CA-210002-10	CAP MYLAR .001UF 5% 100V	C111,211
CA-215002-10	CAP MYLAR .0015UF 5% 200V	C112,212
CA-218050-CP	CAP MYLAR .0018UF 5% 50V	C104,106, C108,110, C204,206, C208,210
CA-233001-10	CAP MYLAR .0033UF 10% 100V	C113,213
CA-268001-10	CAP MYLAR .0068UF 5% 100V	C115,117, C119,121, C215,217, C219,221
CA-318050-CP	.018, 50V, 5%, MYLAR	C103,105, C107,109, C203,205, C207,209
CA-368050-CP	.068UF, 50V, 5%, MYLAR	C114,116, C118,120, C214,216, C218,220
CA-410004-10	CAP CER .1UF 20% 50V	C3-6
CA-733025-AE	330UF,25V,ELEC. RADIAL, 20%	C1,2
CO-000006-SS	SOCKET STRIP	REF:RN102, RN104,202, RN204
CO-000081-00	SHUNT/JUMPER, 2 CIRCUIT	J101-103, J201-203
CO-000082-00	HEADER 3-POS VERT	J101-103, J201-203
CO-000083-00	HEADER 1 X 10-PIN RT ANGLE	P1:1
CO-000084-00	HEADER 1 X 12-PIN RT ANGLE	P1:2
IC-000074-OP	IC LIN QUAD OP AMP TL074	U101,201
IC-000346-OP	IC LIN QUAD OP AMP MC34184	U102,202
PC-004031-00	PCB FAB,UNIV. FILTER,MINI-SLOT	
QD-004744-ZA	DIODE ZNR 15V 5% 1W 1N4744A	Z1,2
RE-006811-BM	68.1 OHM, 1/4W, METAL FILM,1%	R110,210
RE-118201-AM	1.82K 1/8W 1% METAL FILM	R106,206
RE-136501-AM	3.65K 1/8W 1% METAL FILM	R105,205
RE-159001-BM	RES MF 5.90K 1% 1/4W	R101,103, R108,109, R201,203, R208,209
RE-212101-BM	RES MF 12.1K 1% 1/4W	R104,204
RE-214701-BM	RES MF 14.7K 1% 1/4W	R102,107, R202,207
RN-147002-BM	RES NTWK 8-PIN SIP 4.7K 2% 4R	RN202
RN-210002-BM	RES NTWK 8-PIN SIP 10K 1% 4R	RN103,203
RN-210002-EM	RES NTWK 6-PIN SIP 10K 2% 3R	RN101,105, RN201,205
RN-222002-BM	RES NTWK 8-PIN SIP 22K 2% 4R	RN204
RN-282002-BM	RES NTWK 8-PIN SIP 82K 2% 4R	RN102
RN-312002-BM	RES NTWK 8-PIN SIP 120K 2% 4R	RN104
SW-000035-00	SWITCH SLIDE 4PDT 12-PIN DIP	S101,102, S201,202

MPC XU UNIVERSAL FILTER

WP-004031-00 PCB ASSY, UNIVERSAL FILTER

Part Number	Description	Reference
CA-068001-10	CAP CER 68PF 10% 100V	C101,102, C201,202
CA-210002-10	CAP MYLAR .001UF 5% 100V	C111,211
CA-215002-10	CAP MYLAR .0015UF 5% 200V	C112,212
CA-218050-CP	CAP MYLAR .0018UF 5% 50V	C104,106, C108,110, C204,206, C208,210
CA-233001-10	CAP MYLAR .0033UF 10% 100V	C113,213
CA-268001-10	CAP MYLAR .0068UF 5% 100V	C115,117, C119,121, C215,217, C219,221
CA-318050-CP	.018, 50V, 5%, MYLAR	C103,105, C107,109, C203,205, C207,209
CA-368050-CP	.068UF, 50V, 5%, MYLAR	C114,116, C118,120, C214,216, C218,220
CA-410004-10	CAP CER .1UF 20% 50V	C3-6
CA-733025-AE	330UF,25V,ELEC. RADIAL, 20%	C1,2
CO-000006-SS	SOCKET STRIP	REF:RN102, RN104,202, RN204
CO-000081-00	SHUNT/JUMPER, 2 CIRCUIT	J101-103, J201-203
CO-000082-00	HEADER 3-POS VERT	J101-103, J201-203
CO-000083-00	HEADER 1 X 10-PIN RT ANGLE	P1:1
CO-000084-00	HEADER 1 X 12-PIN RT ANGLE	P1:2
IC-000074-OP	IC LIN QUAD OP AMP TL074	U101,201
IC-000346-OP	IC LIN QUAD OP AMP MC34184	U102,202
PC-004031-00	PCB FAB,UNIV. FILTER,MINI-SLOT	
QD-004744-ZA	DIODE ZNR 15V 5% 1W 1N4744A	Z1,2
RE-006811-BM	68.1 OHM, 1/4W, METAL FILM,1%	R110,210
RE-118201-AM	1.82K 1/8W 1% METAL FILM	R106,206
RE-136501-AM	3.65K 1/8W 1% METAL FILM	R105,205
RE-159001-BM	RES MF 5.90K 1% 1/4W	R101,103, R108,109, R201,203, R208,209
RE-212101-BM	RES MF 12.1K 1% 1/4W	R104,204
RE-214701-BM	RES MF 14.7K 1% 1/4W	R102,107, R202,207
RN-147002-BM	RES NTWK 8-PIN SIP 4.7K 2% 4R	RN202
RN-210002-BM	RES NTWK 8-PIN SIP 10K 1% 4R	RN103,203
RN-210002-EM	RES NTWK 6-PIN SIP 10K 2% 3R	RN101,105, RN201,205
RN-220002-BM	RES NTWK 8-PIN SIP 20K 2% 4R	RN204
RN-268002-BM	RES NTWK 8-PIN SIP 68K 2% 4R	RN102
RN-312002-BM	RES NTWK 8-PIN SIP 120K 2% 4R	RN104
SW-000035-00	SWITCH SLIDE 4PDT 12-PIN DIP	S101,102, S201,202

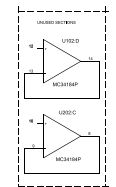
REVISIONS				
ZONE	REV	DESCRIPTION	DATE	APPROVED
A		PROD RELEASE PER ECO 2349	6-29-94	



8. SWITCHES S101, S102, S201 AND S202 SHOWN IN LOW RANGE POSITION.
7. PARTS IN COMMON TO BOTH CHANNELS NUMBERED 1-99.
6. CH 2 COMPONENTS NUMBERED 201-299.
5. CH 1 COMPONENTS NUMBERED 101-199.
4. ALL RESISTOR NETWORKS +/- 2%.
3. ALL CAPACITOR VALUES IN MICROFARADS, 100V.
2. ALL RESISTOR VALUES ARE IN OHMS, +/-1%, 1/4 WATT.
1. THIS DRAWING USED IN CONJUNCTION WITH PCB ASSEMBLY WP-004031-00.
- NOTES: UNLESS OTHERWISE SPECIFIED

9. FACTORY SET CONFIGURATION:
 INSTALLED RESISTOR NETWORKS ARE RN102:68K (1.2KHz), RN104:120K (20Hz), RN202:4.7K (20KHz) AND RN204:20K (1.2KHz). SWITCHES S101, S201 AND S202 ARE IN HIGH RANGE POSITION 2 AND S102 IN LOW RANGE POSITION 1. SHUNT JUMPERS ARE IN BYPASS MODE AND 6dB HORN BOOST POSITIONS.

REFERENCE DESIGNATION	VALUE	UNIT	REF. NO.
Z2			
U101, U202			
S102, S202			
RN105, RN205			
R110, R210			
P1			
J103, J203			
C121, C221	C7-C100		



REF DES	PART#	+15 VDC	+16V VDC
U101, U102	14 PIN DIP	4	11
U201, U202			

PARTS LIST		APPROVALS		DATE	
DRAWN	D. LILLEMØEN	DATE	5-9-94		
CHECKED					
REVIEWED					
DATE					

UNLESS OTHERWISE SPECIFIED:
 DIMENSIONS ARE IN INCHES.
 DIMENSIONS ARE IN MILLIMETERS.
 TOLERANCES ARE:
 FRACTIONS DECIMALS ANGLES
 .125 1/32 .0015 .015
 .0015 .0015 .015
 DECIMALS .0015 .015 .015
 .0015 .015 .015
 .0015 .015 .015

SCALE: NONE
 DATE: 6-29-94
 SHEET: 1 OF 1