

# Technical Manual

# JBL JRX115

## SPECIFICATIONS



### ACOUSTIC & ELECTRICAL SPECIFICATIONS:

- Nominal Impedance: 8 Ohms
- Power Capacity: 250W, Peak Power Capacity 1000W
- Frequency Range: 38 Hz – 16 kHz (-10 dB)
- Sensitivity: 98 dB, 1 Watt @ 1 Meter
- Crossover Frequency: 1.6 kHz

### SYSTEM COMPONENTS:

- Cabinet: Enclosure (Not For Sale)
- Grille: 352946-001
- Low Frequency Transducer: M115-8A, 380mm (15in.) Cone Transducer
- DC Resistance: 5.3 ohms
- High Frequency Transducer: 2412H-1, 25.4mm (1 in.) Exit Compression Driver

### SYSTEM COMPONENTS: (CONT'D)

- DC Resistance: 4.3 ohms
- Crossover Network: 364247-001

### AURAL SWEEP TEST SPECIFICATIONS:

- A. System Aural Sweep Test: 7.0V Input, 20 Hz to 20 kHz
- B. L.F. Aural Sweep Test: 6.0V Input, 20 Hz to 200 Hz
- C. H.F. Aural Sweep Test: 2.83V Input, 500 Hz to 20 kHz

### PHYSICAL SPECIFICATIONS:

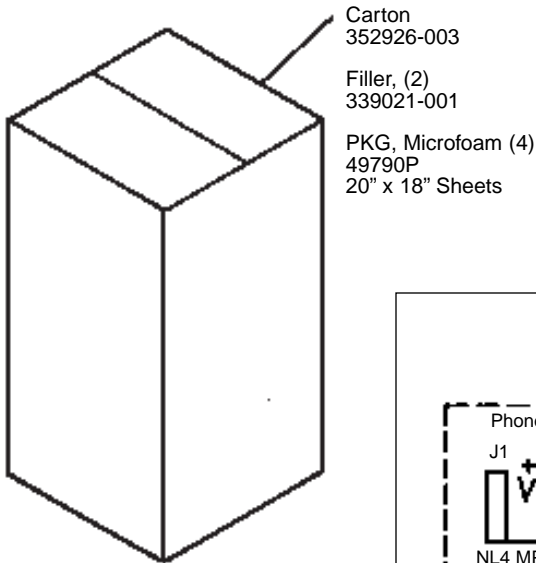
- Enclosure Dimensions: 698.5 x 463.6 x 431.8mm D (27.5 x 18.25 x 17.0 in.D.)
- Shipping Weight: 67.0 lb (30.4 kg.)

### WARRANTY INFORMATION:

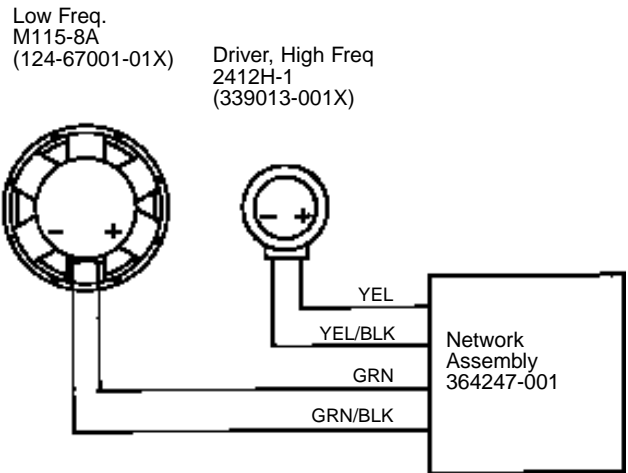
- Refer to Warranty Statement packed with each product.

## PACKAGE

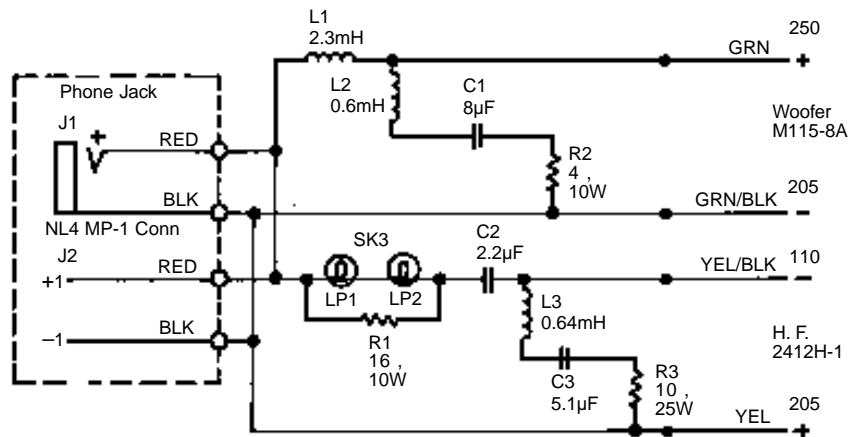
Warranty 59660  
Spec Sheet 352927-001



## WIRING DIAGRAM



### NETWORK SCHEMATIC - (364247-001)



JBL JRX115 REV L

# JBL JRX115

## COMPONENT EXPLODED VIEW

