

DRAWING NUMBER ISSUE
S-B260C-04

BSS Audio
 HARMAN INTERNATIONAL
 INDUSTRIES LIMITED
 CRANBORNE HOUSE
 CRANBORNE ROAD
 POTTERS BAR
 HERTS
 EN6 3JN
 Tel 01707 660667
 Fax 01707 660755

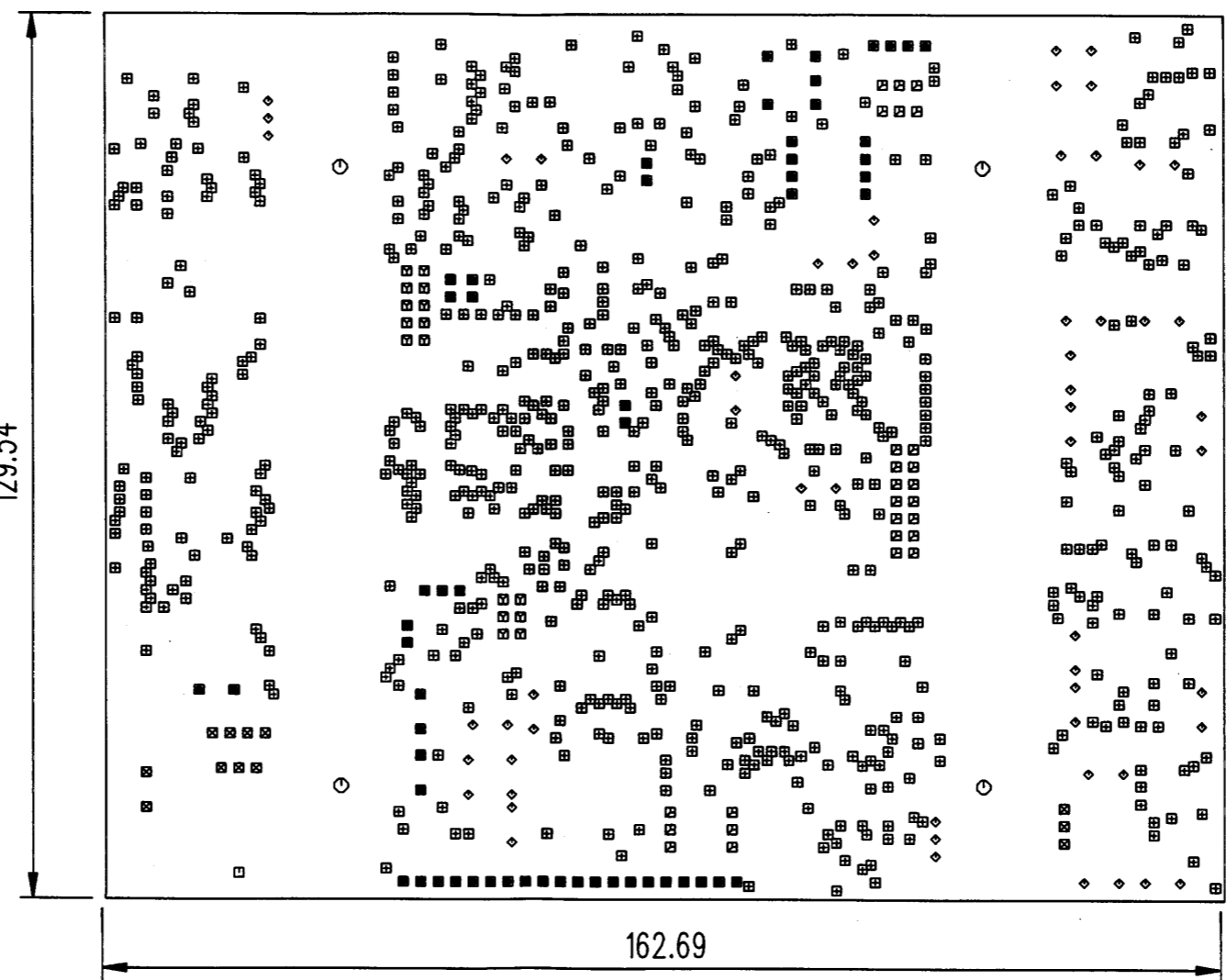
**BSS AUDIO LTD
 MASTER**

SIZE	CON	QTY	SYM
0.508	Yes	714	⊠
0.95	Yes	56	◇
0.95	Yes	56	■
1	Yes	26	⊠
1	Yes	16	⊠
1.1	Yes	12	⊠
1.6	Yes	2	⊠
4.5212	Yes	4	⊙
3.8	No	1	⊠

TITLE: DSP BOARD DRILLING
 FILENAME: S-B260C-04.LAY
 DRAWN BY: AW
 DATE: 26-08-99
 CHECKED: PT 25/10/00

MANUFACTURING NOTES:
 MATERIAL:
 1,6mm +/- 0,2 THK. GLASS FIBRE
 1oz CU 4 LAYER.
 FLAMMABILITY RATING TO 94-V0
 FINISH:
 1. PCB TO BE HOT AIR SOLDER LEVELLED
 2. SOLDER RESIST BOTH SIDES IN GREEN
 PHOTOIMAGABLE
 3. LEGEND ON COMPONENT SIDE IN WHITE
 DRILLING:
 1. SEE DRILL TABLE FOR HOLE SIZES &
 PLATING INFO.
 HOLE SIZES SPECIFIED ARE FINISHED SIZES
 HOLE TOL. +0,15/ -0
 SURFACE MOUNT:
 COMP.SIDE ONLY -1155-
 MIN PAD 0.024" x 0.060"
 TRACKING:
 MINIMUM TRACK WIDTH 0.008"
 MINIMUM TRACK SPACING 0.008"
 TESTING:
 DOUBLE SIDED BARE BOARD TEST
 NOTES:
 TOL. +/- 0,1mm UNLESS STATED OTHERWISE
 DIMENSIONS IN MM UNLESS STATED OTHERWISE

ISSUE COMMENTS:
 1. PRODUCTION RELEASE 08/12/99
 2. ECN0341 16/04/00
 3. ECN0366 05/09/00
 4. ECN0380 6/10/00

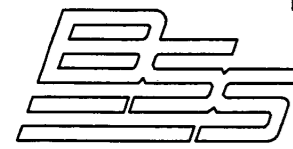


FOR MOTHERPANEL DETAILS REFER TO DRAWING S-B260CR

THIS DRAWING IS THE COPYRIGHT OF BSS Audio Ltd. ALL REPRODUCTION AND COPYING, OTHER THAN THAT FOR LICENCED MANUFACTURERS OWN INTERNAL USE, OR DISCLOSURE OF PART OR WHOLE TO A THIRD PARTY WITHOUT PRIOR WRITTEN AUTHORISATION IS IN VIOLATION OF THE COPYRIGHT.
 © BSS Audio Ltd 1995

DRAWING NUMBER ISSUE

S-B260CA-04



HARMAN INTERNATIONAL INDUSTRIES LIMITED
CRANBORNE HOUSE
CRANBORNE ROAD
POTTERS BAR
HERTS
EN6 3JN
Tel 01707 660667
Fax 01707 660755

BSS Audio

BSS AUDIO LTD
MASTER

TITLE: DSP BOARD ASSEMBLY DRAWING

FILENAME: S-B260C-04.LAY

DRAWN BY: PST

DATE: 10/12/99

CHECKED: PT 25/10/00

LAYERS:

ISSUE DETAILS

- 1. PRODUCTION RELEASE 08/12/99
- 2. ECN0341 16/04/00
- 3. ECN0366 05/09/00
- 4. ECN0380 6/10/00

DIMENSIONS:

MATERIALS:

FINISH:

ARTWORK:

NOTES SHT 1 OF 1

ASSEMBLY DETAILS

TEMPERATURE SENSOR IC35
TO BE FITTED AS CLOSE
TO THE PCB AS POSSIBLE

LED LD3
NOT FITTED IN PRODUCTION

FIT JUMPERS IN
LOCATIONS SHOWN
ACROSS PINS 3-4 & 5-6

CONNECTOR CN9
NOT FITTED IN PRODUCTION

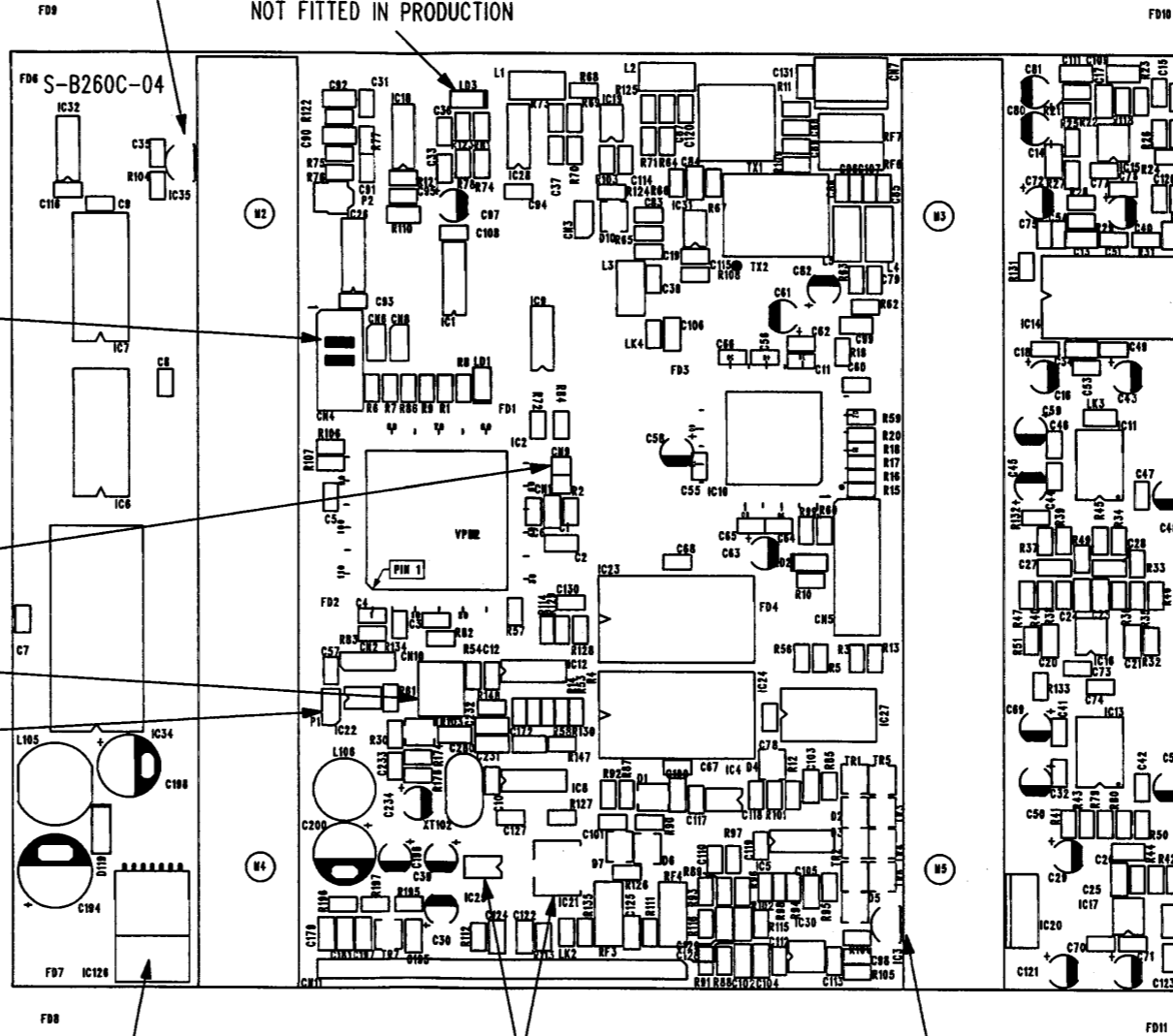
CONNECTOR CN10
NOT FITTED IN PRODUCTION

CONNECTOR P1
NOT FITTED IN PRODUCTION

FIT SNAP RIVET
PLASTIC BUSH

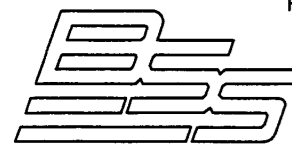
IC21 & IC25 ARE BOTH MC33269
DEPENDING ON PACKAGE AVAILABILITY
ONE OR THE OTHER MAY BE FITTED

TEMPERATURE SENSOR IC3
TO BE FITTED AS CLOSE
TO THE PCB AS POSSIBLE



DRAWING NUMBER ISSUE

S-B260CG-04



HARMAN INTERNATIONAL
INDUSTRIES LIMITED
CRANBORNE HOUSE
CRANBORNE ROAD
POTTERS BAR
HERTS
EN6 3JN
Tel 01707 660667
Fax 01707 660755

BSS Audio

TITLE: DSP BOARD GLUE MAP

FILENAME: S-B260C-04.LAY

DRAWN BY: PST

DATE: 10/12/99

CHECKED: PT 25/10/00

LAYERS:

ISSUE DETAILS

- 1. PRODUCTION RELEASE 08/12/99
- 2. ECN0341 16/04/00
- 3. ECN0366 05/09/00
- 4. ECN0380 6/10/00

DIMENSIONS:

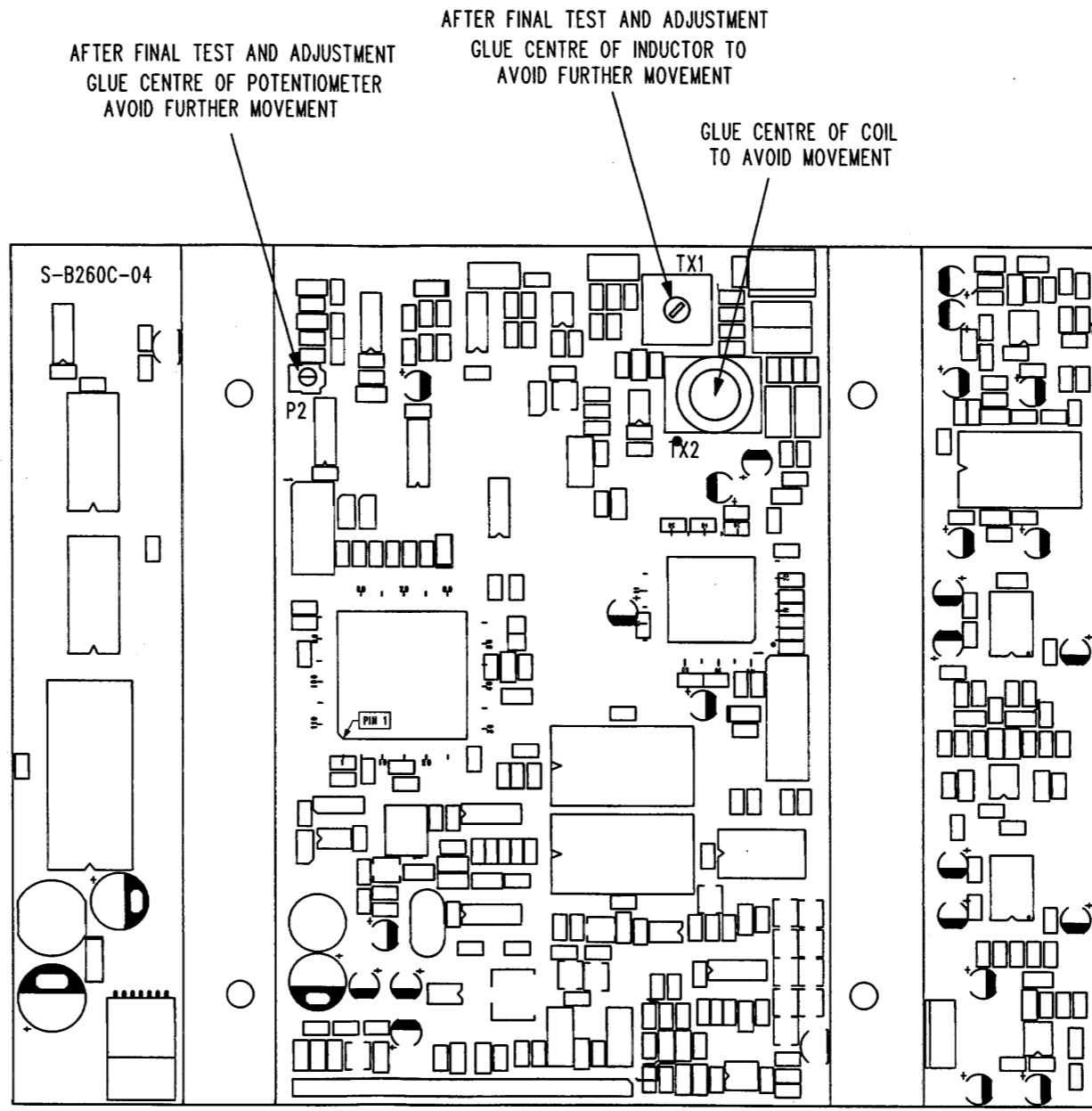
MATERIALS:

FINISH:

ARTWORK:

NOTES SHT 1 OF 1

ASSEMBLY DETAILS



**BSS AUDIO LTD
MASTER**