

DRAWING NUMBER ISSUE

S-C260BA-01

HARMAN INTERNATIONAL
INDUSTRIES LIMITED
CRANBORNE HOUSE
CRANBORNE ROAD
POTTERS BAR
HERTS
EN6 3JN
Tel 01707 660667
Fax 01707 660755



NOTE: COMPONENT REFERENCES DO NOT APPEAR ON MANUFACTURED PCB

TITLE: PWM CONTROLLER PCB ASSEMBLY

FILENAME: S-C260B-01.LAY

DRAWN BY: BV

DATE: 27/09/99

CHECKED: PT 15/08/00

LAYERS:

ISSUE DETAILS

1. PRODUCTION RELEASE 27/09/99

DIMENSIONS:

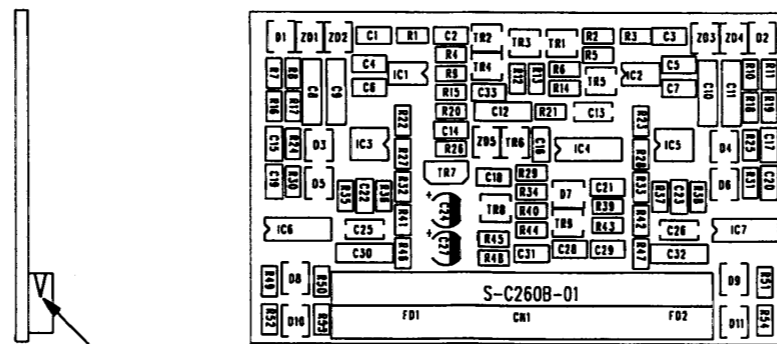
MATERIALS:

FINISH:

ARTWORK:

NOTES SHT 1 OF 1

ASSEMBLY DETAILS



NOTE ORIENTATION OF CONNECTOR
ARROW THIS END

C-AUDIO
MASTER

DRAWING NUMBER ISSUE
S-C260B-01



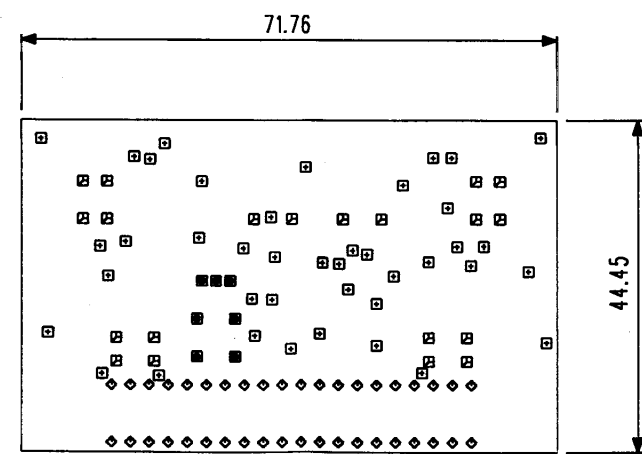
SIZE	CON	QTY	SYM
0.6096	Yes	41	□
0.9	Yes	40	◇
0.95	Yes	7	■
0.95	Yes	20	⊠

TITLE: PWM CONTROLLER DRILLING
 FILENAME: S-C260B-01.LAY
 DRAWN BY: BV
 DATE: 30-06-99
 CHECKED: PT 15/08/00

MANUFACTURING NOTES:
 MATERIAL :
 1,6mm +/- 0,2 THK. GLASS FIBRE
 4 LAYER MULTILAYER
 FLAMMABILITY RATING TO 94-V0
 FINISH:
 1. PCB TO BE HOT AIR SOLDER LEVELLED
 2. SOLDER RESIST BOTH SIDES IN GREEN PHOTOIMAGABLE
 3. LEGEND ON COMPONENT SIDE IN WHITE
 DRILLING:
 1. SEE DRILL TABLE FOR HOLE SIZES & PLATING INFO.
 HOLE SIZES SPECIFIED ARE FINISHED SIZES
 HOLE TOL. +0,15/ -0
 SURFACE MOUNT:
 COMP.SIDE ONLY -296-
 MIN PAD 0.024" x 0.060"
 TRACKING:
 MINIMUM TRACK WIDTH 0.008"
 MINIMUM TRACK SPACING 0.008"
 TESTING:
 DOUBLE SIDED BARE BOARD TEST
 NOTES:
 TOL. +/- 0,1mm UNLESS STATED OTHERWISE
 DIMENSIONS IN MM UNLESS STATED OTHERWISE

ISSUE COMMENTS:
 1. PRODUCTION RELEASE 27/09/99

**C-AUDIO
 MASTER**



FOR MOTHERPANEL DETAILS REFER TO DWG No S-C260BR