

Technical Manual



JBL EON10-G2

SPECIFICATIONS

ACOUSTIC & ELECTRICAL SPECIFICATIONS:

- Amplifier Power LF: 125 Watts @ Low Frequency Driver Impedance.
- Amplifier Power HF: 50 Watts @ High Frequency Driver Impedance.
- Frequency Range: 65 Hz – 18 kHz (± 10dB)
- Frequency Response: 90 Hz – 16 kHz (± 3 dB)
- Horizontal Coverage: 90° Nominal
- Vertical Coverage: 60° Nominal
- Rated Maximum SPL: 117 dB, @ 1 M
- Crossover Frequency: 2.7 kHz

SYSTEM COMPONENTS:

- Low Frequency Transducer: Integral Frame with one 10" (254 mm) Driver, Neodymium Magnet, 1.5" Differential-Drive Voice Coil
- DC Resistance: 5.4 ohm ±10%
- High Frequency Transducer: JBL 2412H 1" Compression Driver, Titanium Diaphragm, Ferro-fluid Cooled, 8 ohm
- DC Resistance: 4.3 ohm ±10%

SYSTEM COMPONENTS: (CONT'D)

- Input 1 Sensitivity: -48 dBu to 0 dBu for Rated Output (Mic/Line Switch in Mic Position)
-6 dBu to +20 dBu for Rated Output (Mic/Line Switch in Line Position)
- Input 2 & 3 Sensitivity: -12 dBu to +20 dBu for Rated Output
- Output Level: +26 dBu (Max), Loop/Mix Switch in Mix Position

AURAL SWEEP TEST SPECIFICATIONS:

- A. System Aural Sweep Test: 250 MV Input RMS, Pot at 1/2, Tone flat, Way 20 Hz to 20 kHz
- B. L.F. Aural Sweep Test: 4.0V Input, 20 Hz to 4 kHz
- C. H.F. Aural Sweep Test: 2.5V Input, 500 Hz to 20 kHz

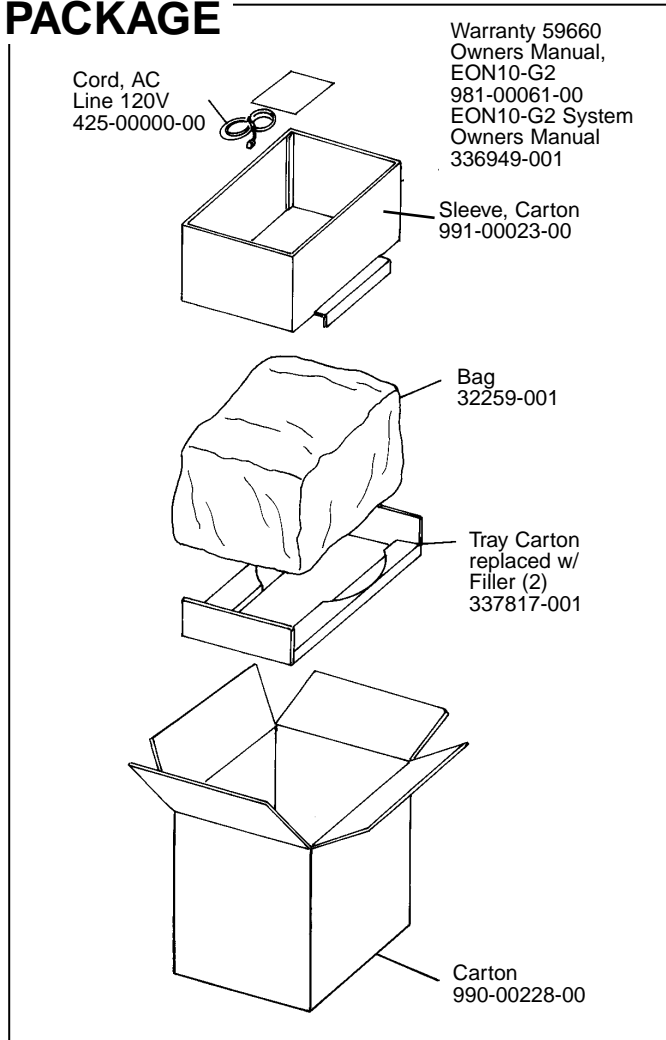
PHYSICAL SPECIFICATIONS:

- Enclosure Dimensions: 493mm x 356mm x 307mm D (19.4 x 14.0 x 12.1 in. D)
- Shipping Weight: 26 lbs. (11.8 kg.)

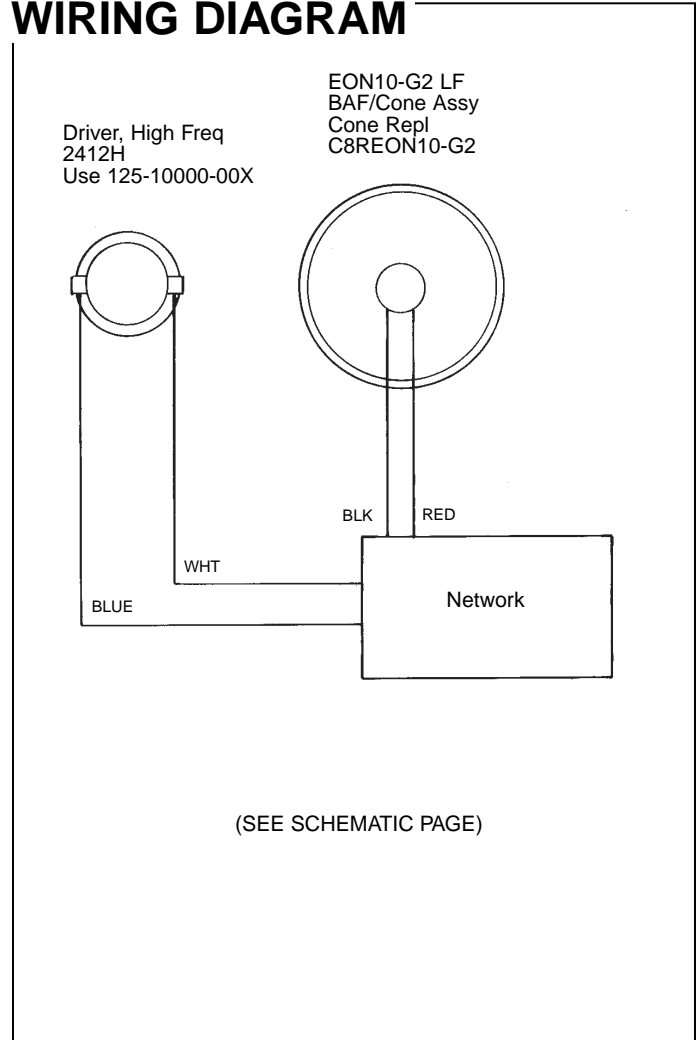
WARRANTY INFORMATION:

- Refer to Warranty Statement packed with each product.

PACKAGE

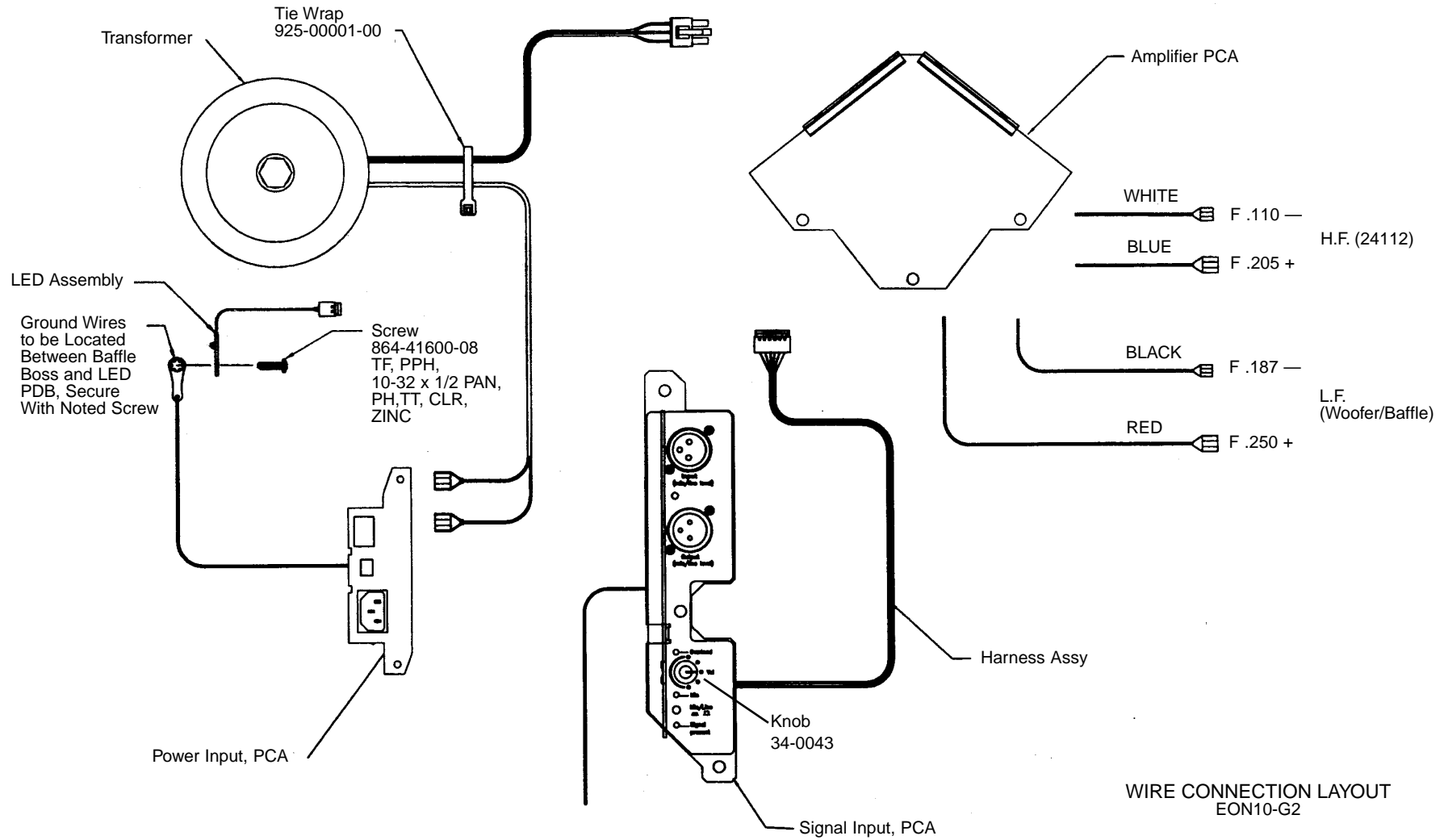


WIRING DIAGRAM



JBL EON10-G2 REV T

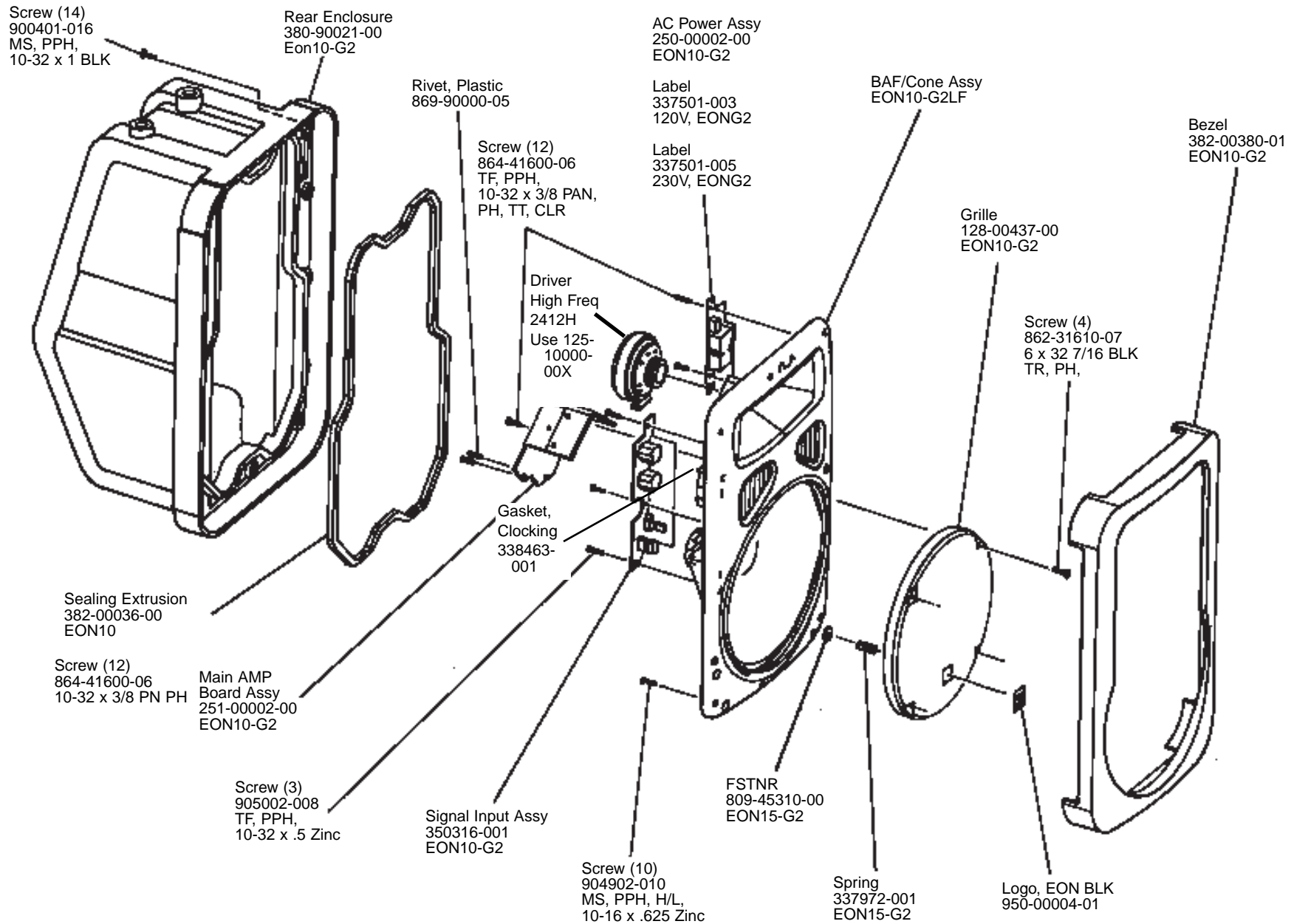
JBL EON10-G2



JBL EON10-G2

COMPONENT EXPLODED VIEW

JBL EON10-G2



JBL EON10-G2

COMPONENT EXPLODED VIEW

