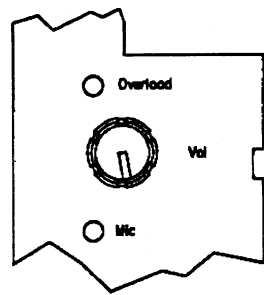
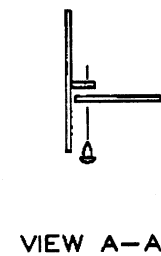
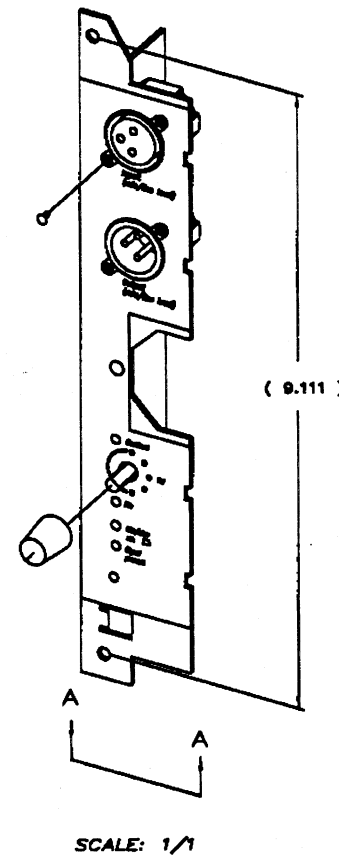
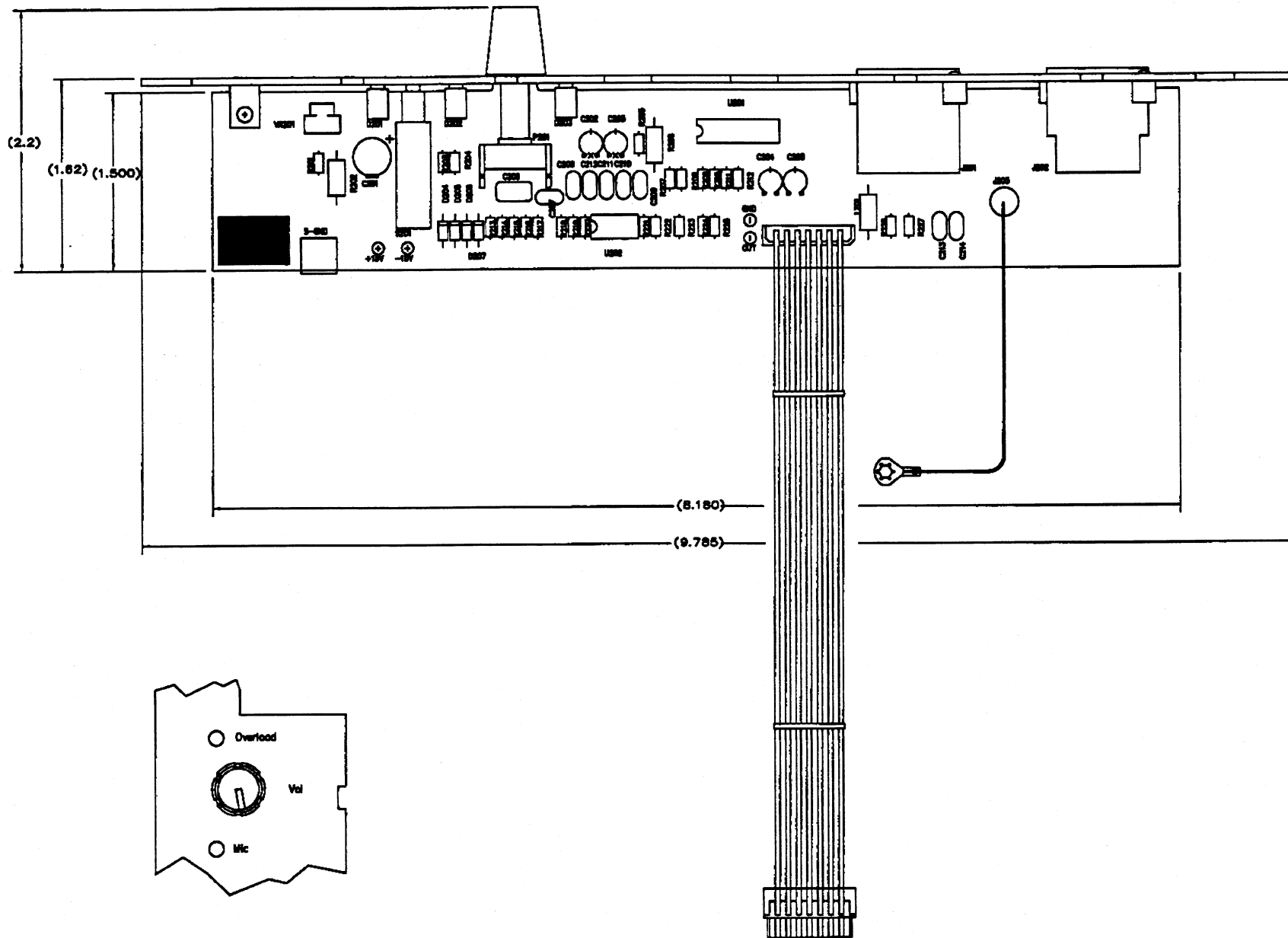


8 7 6 5 4 3 2 1

THESE DRAWINGS AND SPECIFICATIONS ARE THE PROPERTY OF JBL INCORPORATED. THEY ARE ISSUED IN STRICT CONFIDENCE AND SHALL NOT BE REPRODUCED OR USED AS THE BASIS FOR MANUFACTURE OR APPARATUS WITHOUT WRITTEN PERMISSION.

REVISIONS						
CBG	LTR	DESCRIPTION	DRFT	D.C.	DATE	APP
23807	A	RELEASE FOR PRODUCTION.	A		5/17/01	

PART NO.	DESCRIPTION
337975-001	SIGNAL INPUT ASSY, EON15P-1, EON15P/230



UNCONTROLLED COPY

NOTES: (UNLESS OTHERWISE SPECIFIED)

TOLERANCES		TOLERANCES		TOLERANCES		TOLERANCES	
±0.005	±0.010	±0.005	±0.010	±0.005	±0.010	±0.005	±0.010
±0.010	±0.020	±0.010	±0.020	±0.010	±0.020	±0.010	±0.020
±0.020	±0.050	±0.020	±0.050	±0.020	±0.050	±0.020	±0.050
±0.050	±0.100	±0.050	±0.100	±0.050	±0.100	±0.050	±0.100

MODELS	TRIMMED ANGLE PROJECTION	DO NOT SCALE DRAWING	DATE	DATE	DATE	DATE
EON15P-1			5/16/01			
EON15P-1/230						

DESIGNER	DATE	DATE	DATE	DATE
T.H.	5/16/01			

JBL PROFESSIONAL		TITLE	
A Harman International Company Northridge, California 91329, U.S.A.		SIGNAL INPUT ASSY.	

SIZE	DRAWING NO.	REV
D	337975	A

SCALE	SHEET
N/A	1 of 4