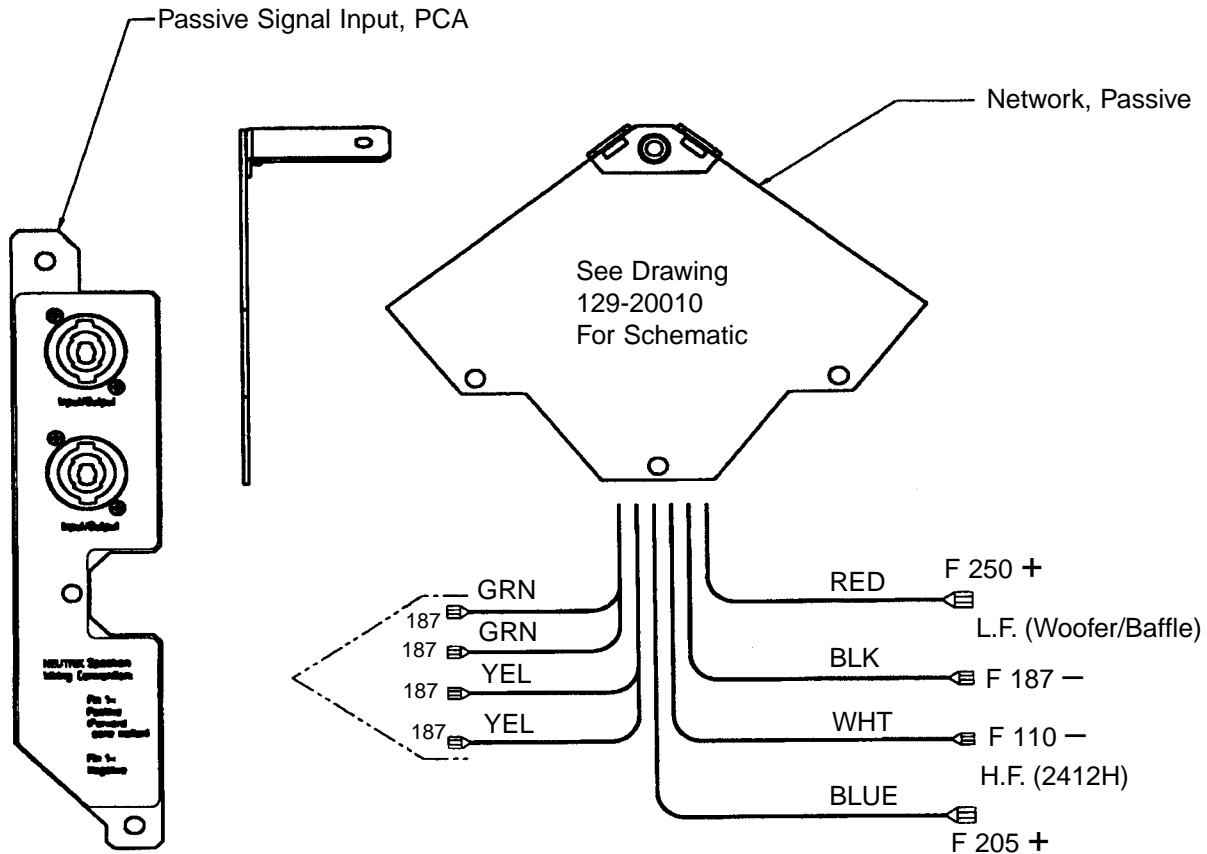
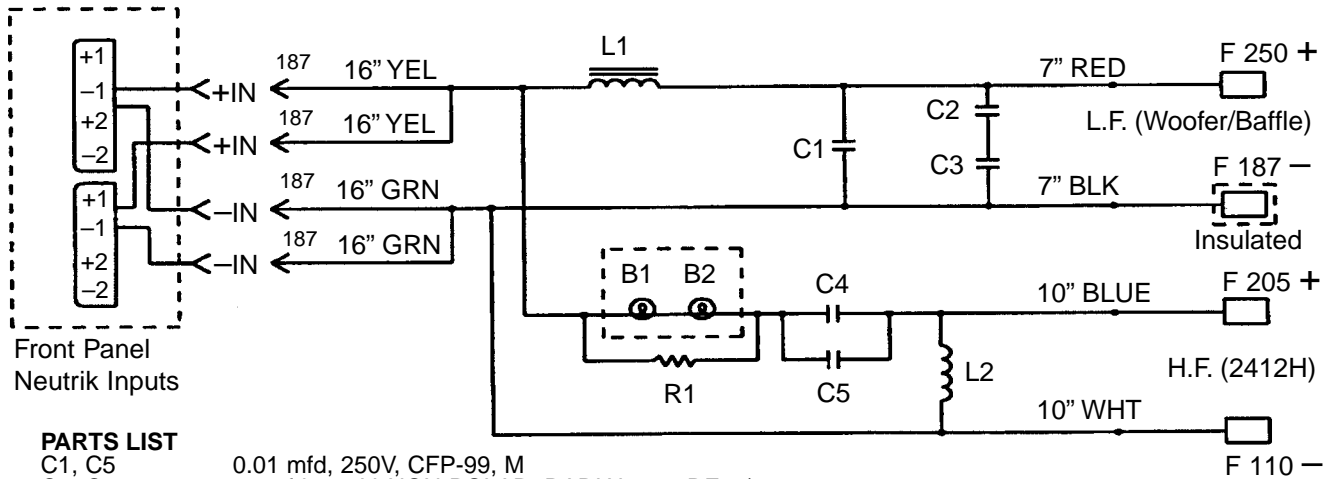


# Wiring Diagram EON10



# Network Schematic EON10



**PARTS LIST**

- C1, C5 0.01 mfd, 250V, CFP-99, M
- C2, C3, 20 mfd, 100V, NON-POLAR, RADIAL, 4% DF, +/-5%
- C4 2.0 mfd, 200V, METALLIZED POLYESTER FILM, FLAT AXIAL TYPE +/-5%
- L1 2.0 mH, LAMINATED STEEL CORE, 0.33 ohm DCR, +/-5%, 18 AWG
- L2 0.30 mH, AIR CORE, 0.40 ohm DCR, +/-5%, 20 AWG
- R1 16 ohm, 10W, +/-5%
- B1, B2 BULBS, SK-3, SECURED WITH ALUMINUM TUBE
- 250 FASTON, FEMALE, .250 x 0.032, TINNED BRASS
- 205 FASTON, FEMALE, .205 x 0.020, TINNED BRASS
- 187 FASTON, FEMALE, .187 x 0.020, TINNED BRASS, FLAG TYPE, RIGHT ANGLE
- 187i FASTON, FEMALE, .187 x 0.032, TINNED BRASS, VINYL INSULATOR
- 110 FASTON, FEMALE, .110 x 0.020, TINNED BRASS
- WIRES 18 AWG, UL-1015
- PCB MATERIAL: CEM-1 COPPER: 1oz.
- MICS ALUMINUM TUBE, 1.25 DIA, .032 MIN, THK, 2.25 LG

**NOTE:** ALL COMPONENTS TO BE TESTED @ 1 kHz UNLESS OTHERWISE SPECIFIED