

Technical Manual

JBL M121-8

SPECIFICATIONS



ACOUSTIC & ELECTRICAL SPECIFICATIONS:

- Nominal Impedance: 8 ohm
- Power Capacity: 300W AES Shaped Noise
- Frequency Range: 60 Hz to 6000 Hz (± 10 dB)
- Sensitivity: 102 dB SPL*
- Crossover Frequencies: N/A

SYSTEM COMPONENTS:

- Cabinet: N/A
- Grille: N/A
- Low Frequency Transducer: 300mm (12 in.) Cone Transducer (M121-8)
- DC Resistance: 5.2 ohm $\pm 10\%$ - Aluminum Wire

AURAL SWEEP TEST SPECIFICATIONS:

- A. L.F. Aural Sweep Test: 7.0V Input, 20 Hz to 1.2 kHz

PHYSICAL SPECIFICATIONS:

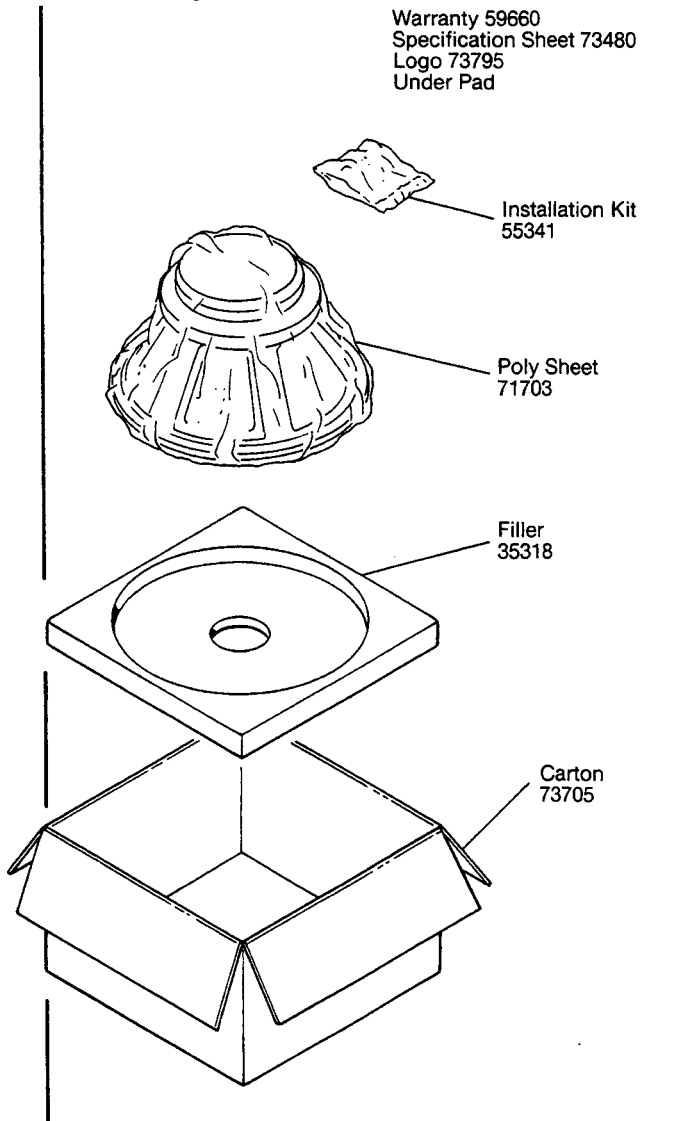
- Enclosure Dimensions: 311mm x 311mm x 147mm D (12.25 x 12.25 x 5.81 in. D)
- Shipping Weight: 16 lbs. (7.3 kg)

WARRANTY INFORMATION:

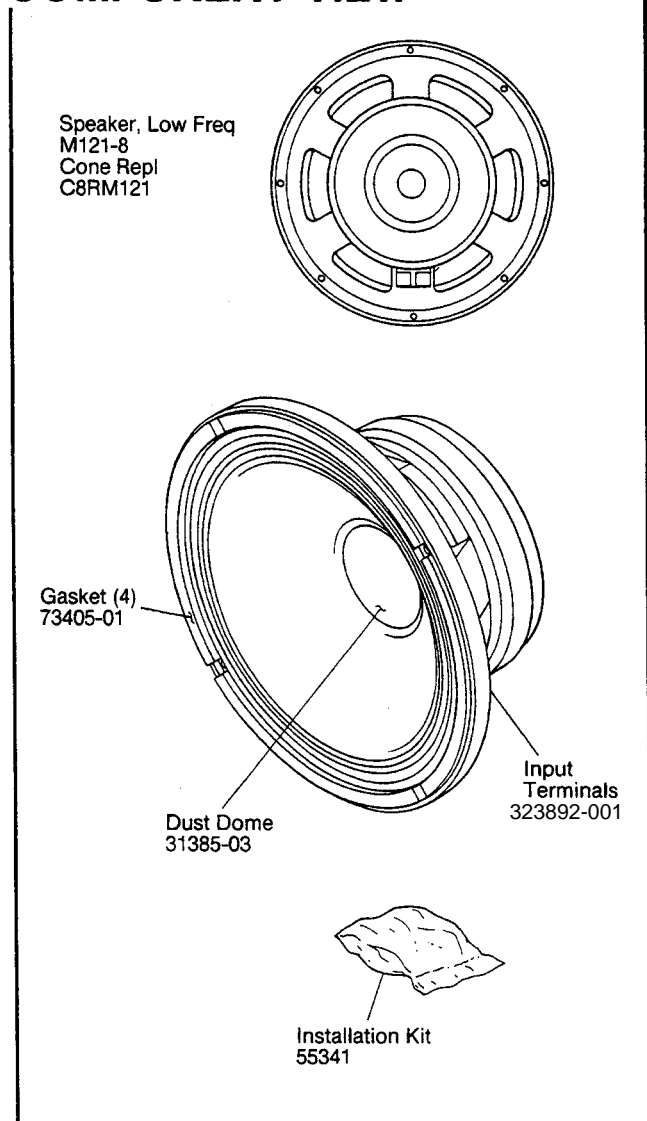
- Refer to the Warranty Statement packed with each product.

*1 Watt (2.83 V RMS) @ 1 Meter

PACKAGE



COMPONENT VIEW

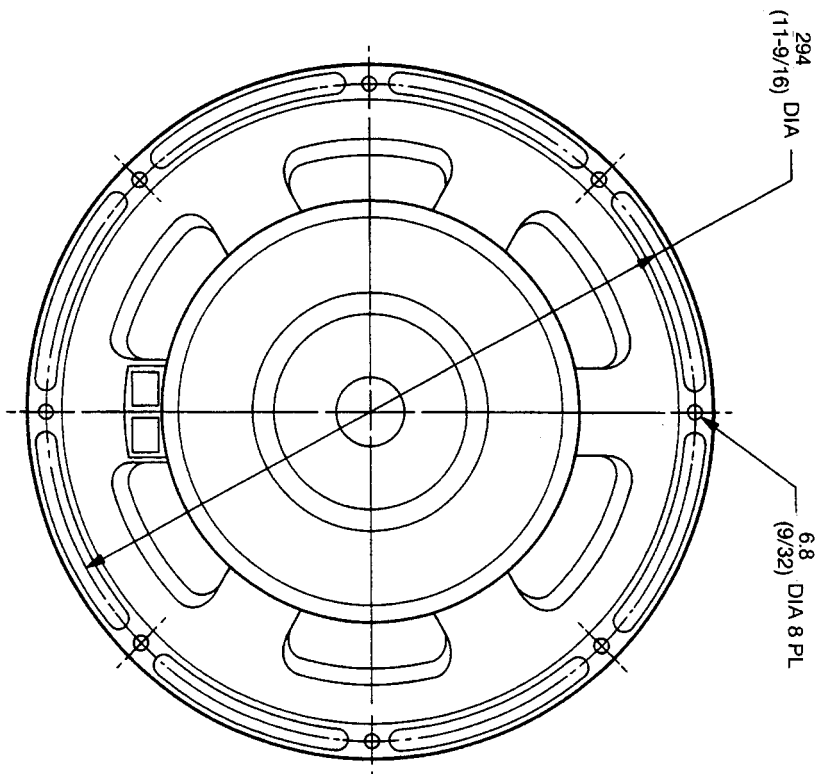
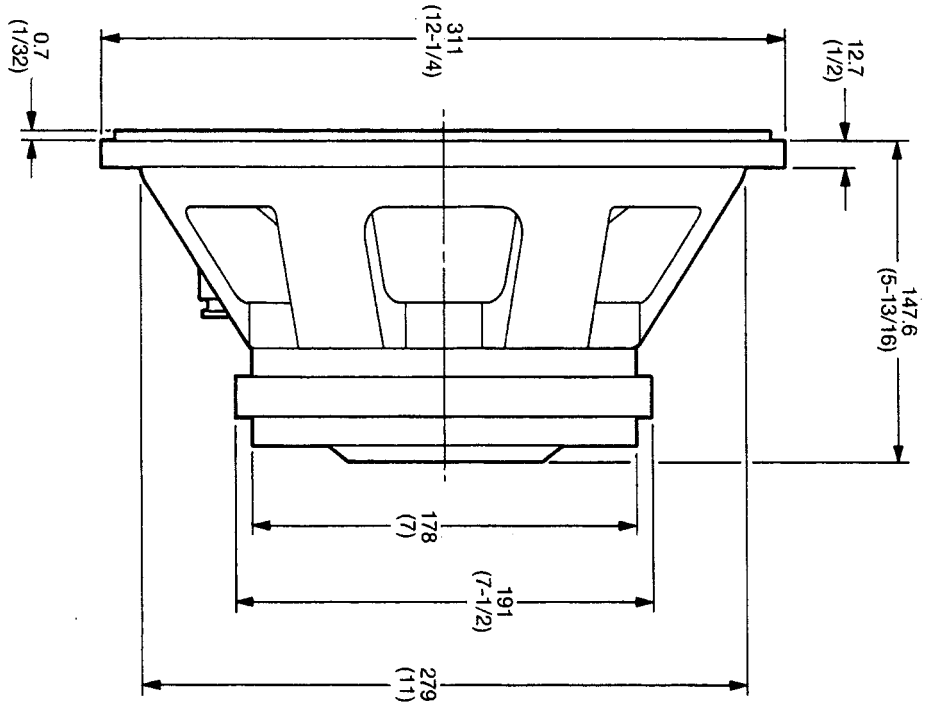


JBL M121-8 REV D

JBL M121-8

MECHANICAL DRAWING

THESE DRAWINGS AND SPECIFICATIONS ARE THE PROPERTY OF JBL. UNAUTHORIZED REPRODUCTION, USE OR DISSEMINATION IS STRICTLY PROHIBITED. THEY ARE ISSUED IN STRICT CONFIDENCE AND SHALL NOT BE REPRODUCED, COPIED, OR USED AS THE BASIS FOR MANUFACTURE OR SALE OF APPARATUS WITHOUT WRITTEN PERMISSION.



NOTE: DIMENSIONS IN () ARE INCHES

JBL M121-8