

Technical Manual

JBL2451H/J

SPECIFICATIONS



ACOUSTIC & ELECTRICAL SPECIFICATIONS:

- Nominal Impedance: 8 ohm (H), 16 ohm (J)
- Power Capacity: 100W Continuous Program Above 500 Hz
150W Continuous Program Above 1 kHz
- Frequency Range: 500 Hz or Higher, 12 dB Octave Min.
- Sensitivity: 111 dB SPL*, 1W @ 1m On-Axis On Horn
118 dB SPL*, 1mW On Plane Wave Tube
- Crossover Frequencies: N/A

SYSTEM COMPONENTS:

- Cabinet: N/A
- Grille: N/A

*1 Watt (2.83 V RMS) @ 1 Meter (H)

*1 Watt (4.0 V RMS) @ 1 Meter (J)

SYSTEM COMPONENTS: (cont'd)

- High Frequency Transducer: 38mm (1-1/2 in. Exit) Pure Titanium Diaphragm (2451H/J)
- DC Resistance: 4.1 ohm \pm 8% Aluminum Wire (H)
8.0 ohm \pm 8% Aluminum Wire (J)

AURAL SWEEP TEST SPECIFICATIONS:

- H.F. Aural Sweep Test: 2.83V Input, 100 Hz to 1.0kHz (H)
4.0V Input, 100 Hz to 1.0kHz (J)

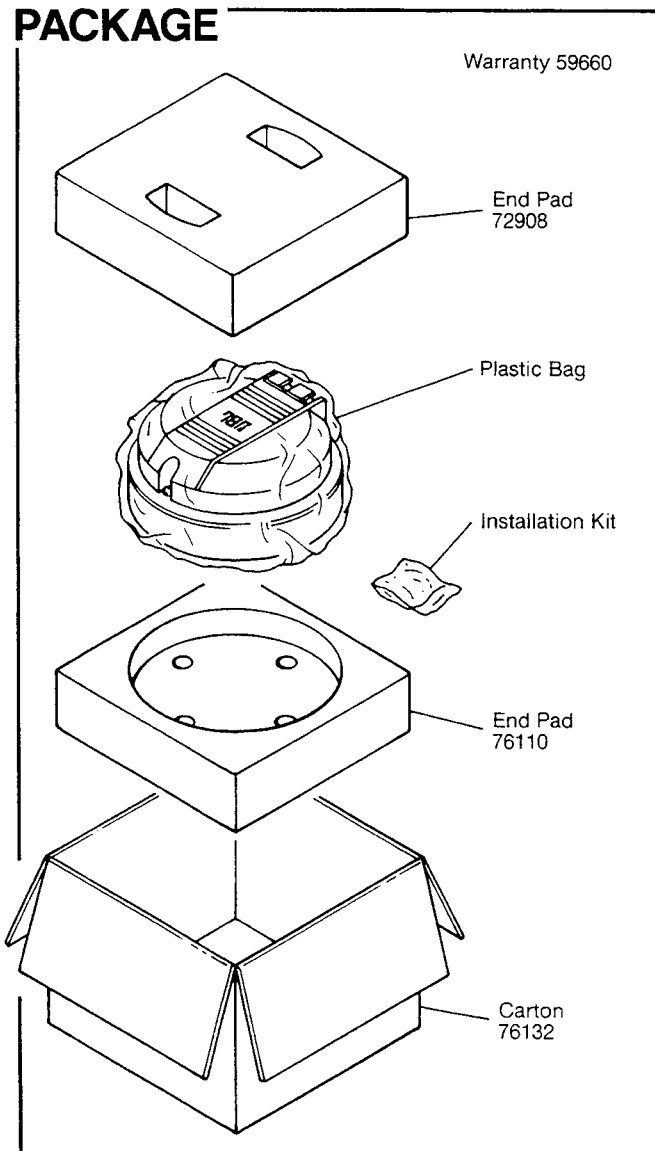
PHYSICAL SPECIFICATIONS:

- Dimensions: 165mm DIA x 95mm D
(6.5 DIA x 3.75 in. D)
- Neodymium Magnet
- Shipping Weight: 10 lbs. (4.5 kg.)

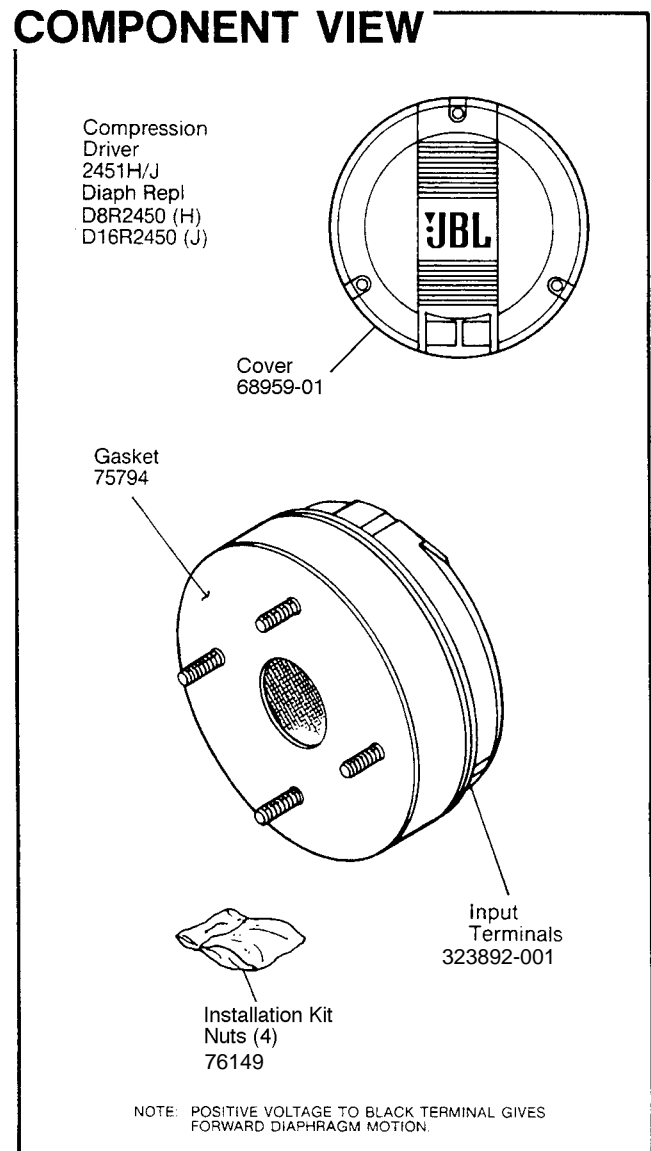
WARRANTY INFORMATION:

- Refer to the Warranty Statement packed with each product.

PACKAGE



COMPONENT VIEW

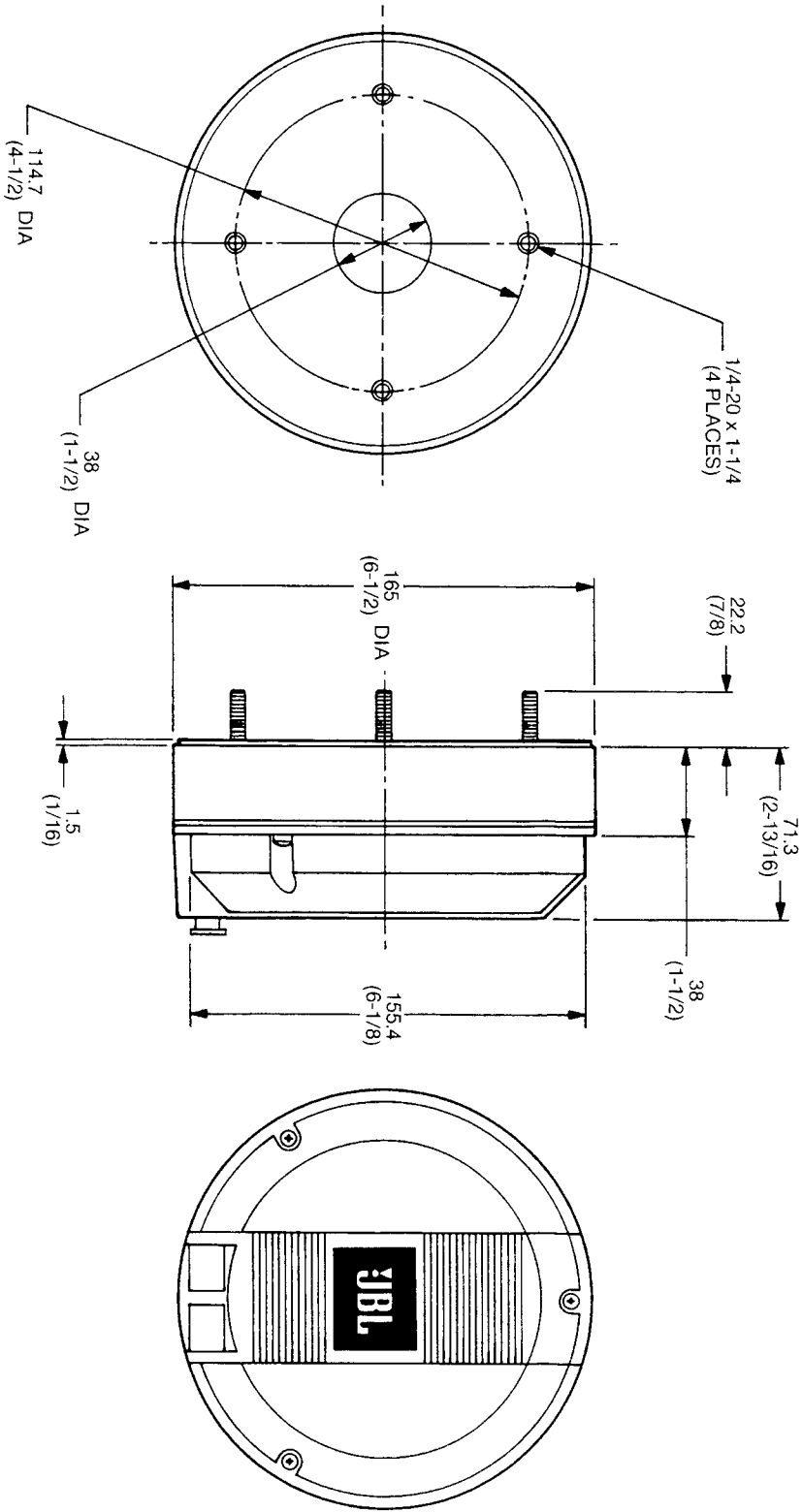


JBL2451H/J REV D

JBL2451H/J

THESE DRAWINGS AND SPECIFICATIONS ARE THE PROPERTY OF JBL INCORPORATED. THEY ARE ISSUED IN STRICT CONFIDENCE AND SHALL NOT BE REPRODUCED, COPIED, OR USED AS THE BASIS FOR MANUFACTURE OR SALE OF APPLICABLES WITHOUT WRITTEN PERMISSION.

MECHANICAL DRAWING



ALL DIMENSIONS ARE REF. ONLY
NOTE: DIMENSIONS IN () ARE IN INCHES

JBL2451H/J