

Technical Manual



CBT 70J/WH

SPECIFICATIONS

ACOUSTIC & ELECTRICAL SPECIFICATIONS:

- Nominal Impedance: 8 Ohms
- Power Capacity: 500W (2000W peak), 2 hrs
350W (1400W peak), 100 hrs
- Frequency Range: 60 Hz - 20 kHz (-10 dB)
- Maximum SPL:
 - Narrow:(speech mode): 125 dB cont ave (131 peak)
 - (music mode): 120 dB cont ave (126 peak)
- Board: (speech mode): 123 dB cont ave (129 peak)
- (music mode): 119 dB cont ave (125 peak)
- Sensitivity: (2.83V @ 1 meter)
 - Narrow: (speech mode): 98 dB (1 kHz - 8 kHz)
 - (music mode): 93 dB (300 Hz - 18 kHz)
 - Board: (speech mode): 96 dB (1 kHz - 8 kHz)
 - (music mode): 92 dB (300 Hz - 18 kHz)

SYSTEM COMPONENTS:

- Cabinet: Enclosure (Not for Sale)
- Grille: 444100-001, 444100-002 (Wh)

SYSTEM COMPONENTS: (CONT'D)

- Low Frequency Driver: Four, 130 mm (5 in) drivers, dual magnet neodymium 38 mm (1.5) voice coil
- DC Resistance: 5.0 ohms
- High Frequency Driver: Sixteen, 25 mm (1 in) drivers, dual magnet neodymium
- DC Resistance: Pending
- Crossover Network: 444091-001

AURAL SWEEP TEST SPECIFICATIONS:

- A. System Aural Sweep Test: 7.0V Input, 20 Hz to 3000 Hz
- B. LF Aural Sweep Test: 10.9V Input, 30 Hz to 2 kHz
- C. HF Aural Sweep Test: 4V Input, 1 kHz to 20 kHz

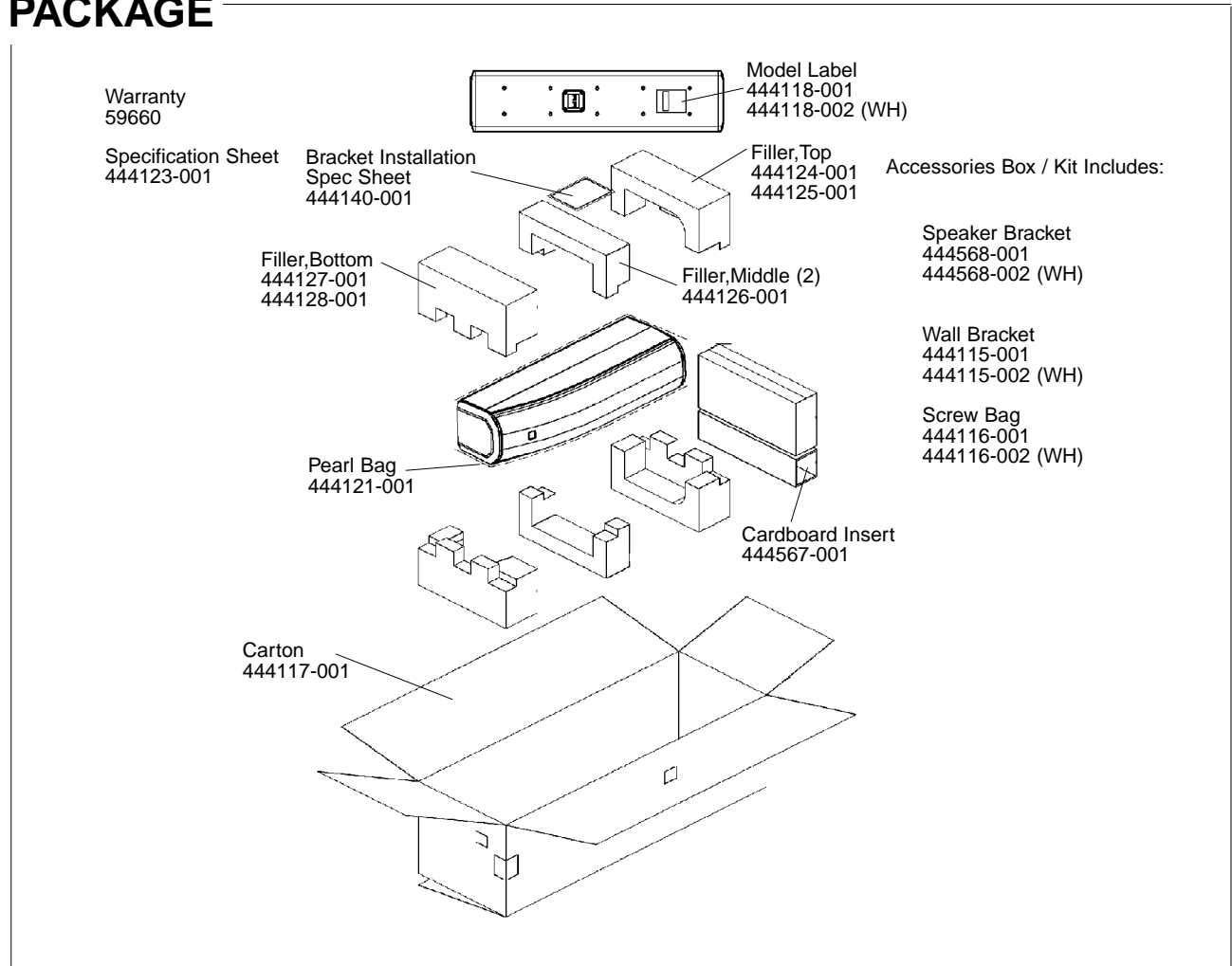
PHYSICAL SPECIFICATIONS:

- Enclosure Dimensions: 694 x 170 x 237 D (27.4 x 6.7 x 9.3 in.D.)
- Net Weight: 21 lb (9.5 kg)

WARRANTY INFORMATION:

- Refer to Warranty Statement packed with each product.

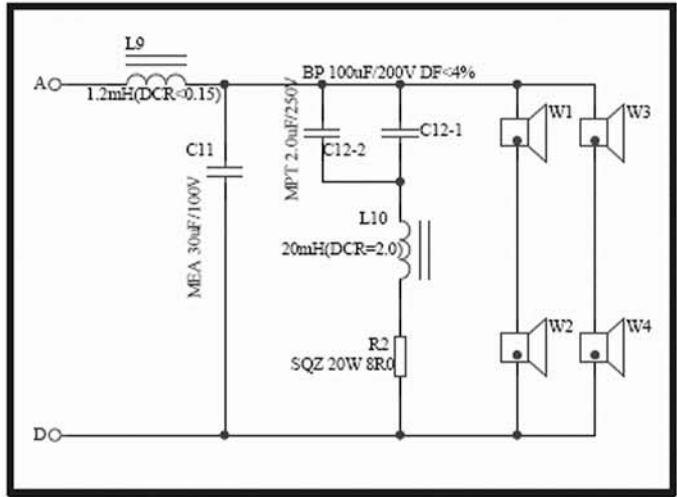
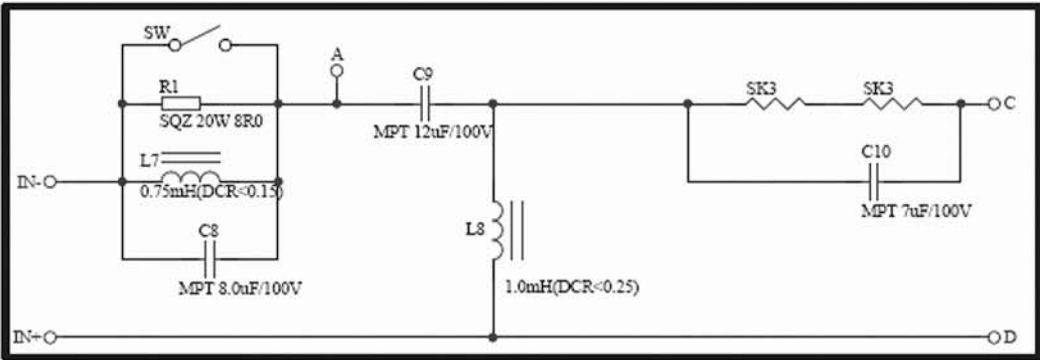
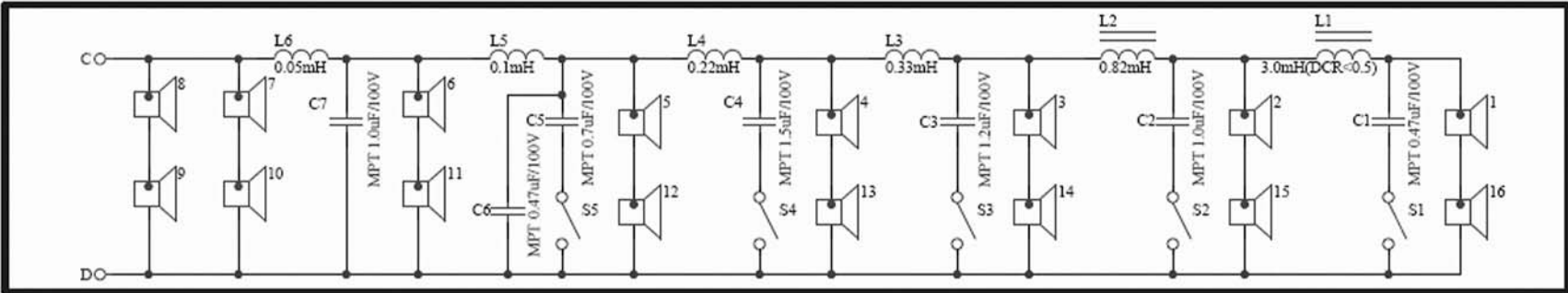
PACKAGE



CBT 70J/WH REV B

JBL CBT 70J/WH

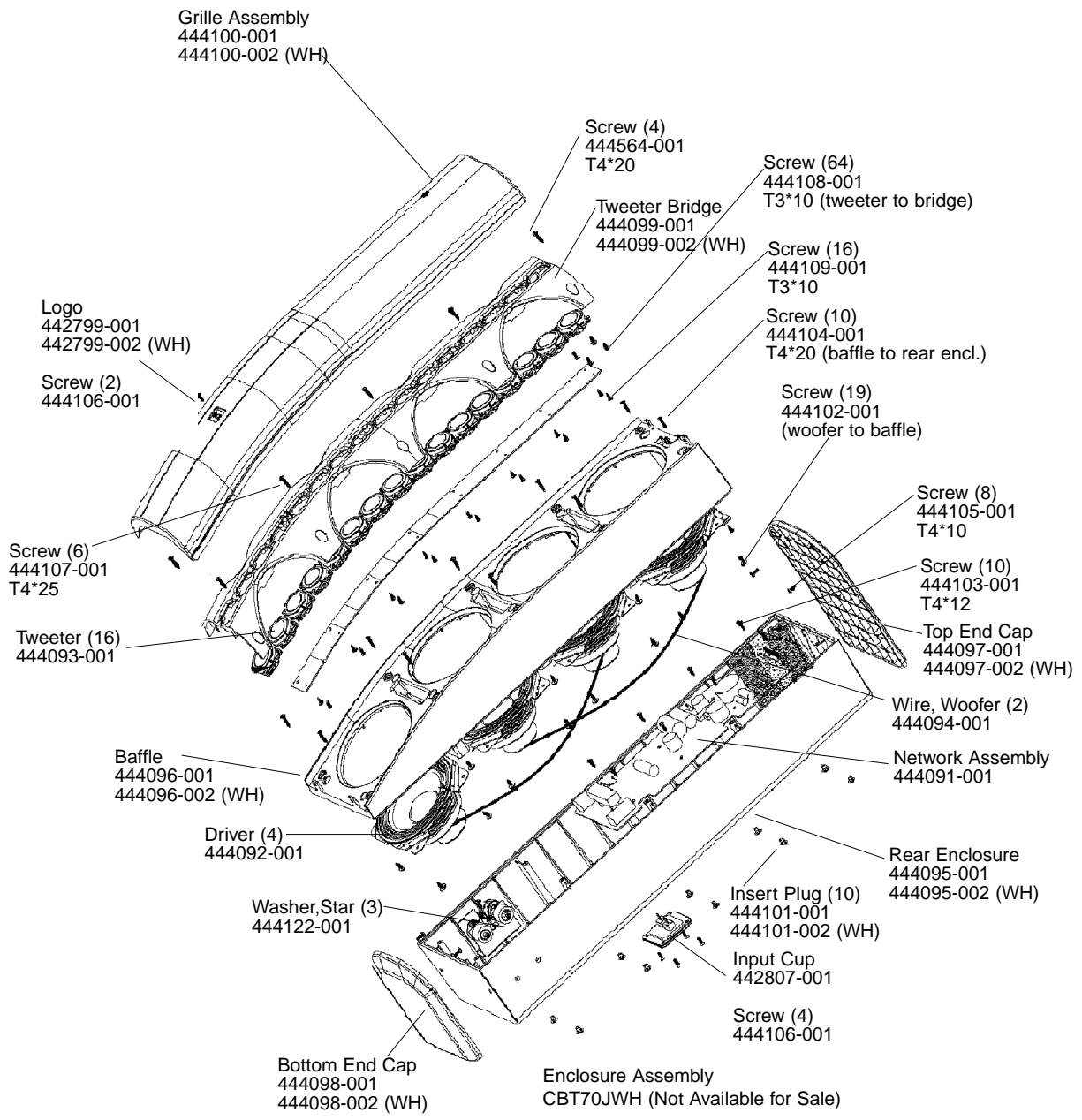
SCHEMATIC (444091-001)



Individual Parts for the above crossover are not available.
A complete replacement assembly should be ordered.

JBL CBT 70J/WH

COMPONENT EXPLODED VIEW **JBL CBT 70J/WH**



JBL CBT 70J/WH