

Technical Manual



JBL CBT 100LAWH

SPECIFICATIONS

ACOUSTIC & ELECTRICAL SPECIFICATIONS:

- Nominal Impedance: 8 Ohms (in Thru mode)
- Power Capacity: 325W (1300W peak), 2 hrs
(8 ohm setting): 200W (800W peak), 100 hrs
- Frequency Range: 80 Hz - 20 kHz (-10 dB)
- Maximum SPL:
 - Narrow:(speech mode): 121 dB cont ave (127 peak)
 - (music mode): 118 dB cont ave (124 peak)
- Board: (speech mode): 118 dB cont ave (124 peak)
- (music mode): 115 dB cont ave (121 peak)
- Sensitivity: (2.83V @ 1 meter)
 - Narrow: (speech mode): 96 db (2 kHz -14 kHz)
 - (music mode): 93 dB (300 Hz - 18 kHz)
 - Board: (speech mode): 93 dB (2 kHz -14 kHz)
 - (music mode): 90 dB (300 Hz - 18 kHz)

SYSTEM COMPONENTS: (CONT'D)

- Grille: 442866-001, 442866-002 (WH)
- Components / Driver: Sixteen 50 mm (2 in) Full-Range
- DC Resistance: 10.0 ohms
- Crossover Network: 442869-001 (Main PCB)

AURAL SWEEP TEST SPECIFICATIONS:

- A. System Aural Sweep Test: 5.0V Input, 20 Hz to 1000 Hz
- Sweep duration: 10 seconds

PHYSICAL SPECIFICATIONS:

- Enclosure Dimensions: 1000 x 98.5 x 153 mm D
(39.4 x 3.8 x 6.0 in.D.)
- Net Weight: 15.8 lb (7.2 kg)

WARRANTY INFORMATION:

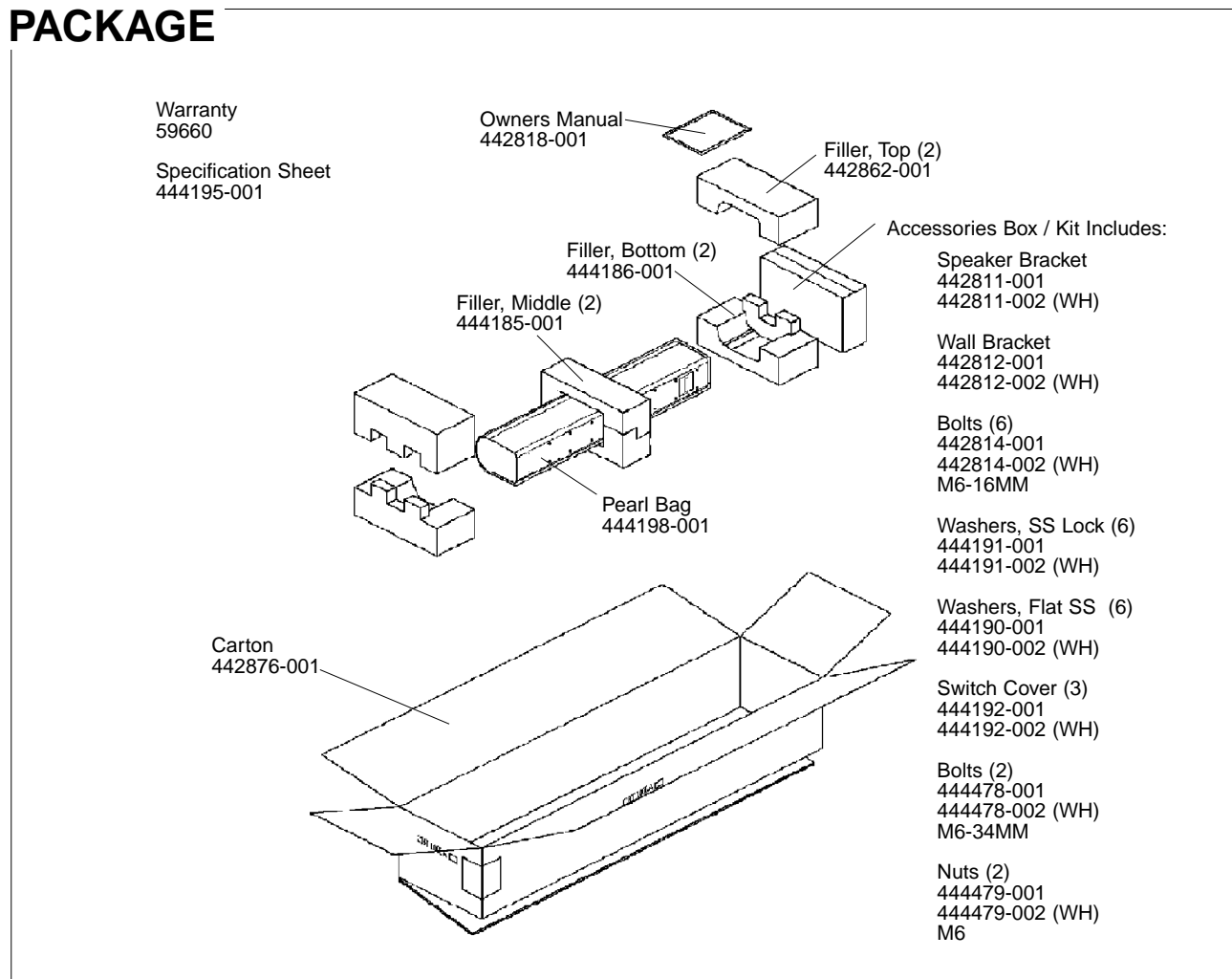
- Refer to Warranty Statement packed with each product.

70V/100V Transformer Taps: 100W, 50W, 30W, (15W at 70V only), and 8Ω thru, via switch

SYSTEM COMPONENTS:

- Cabinet: Enclosure (Not for Sale)

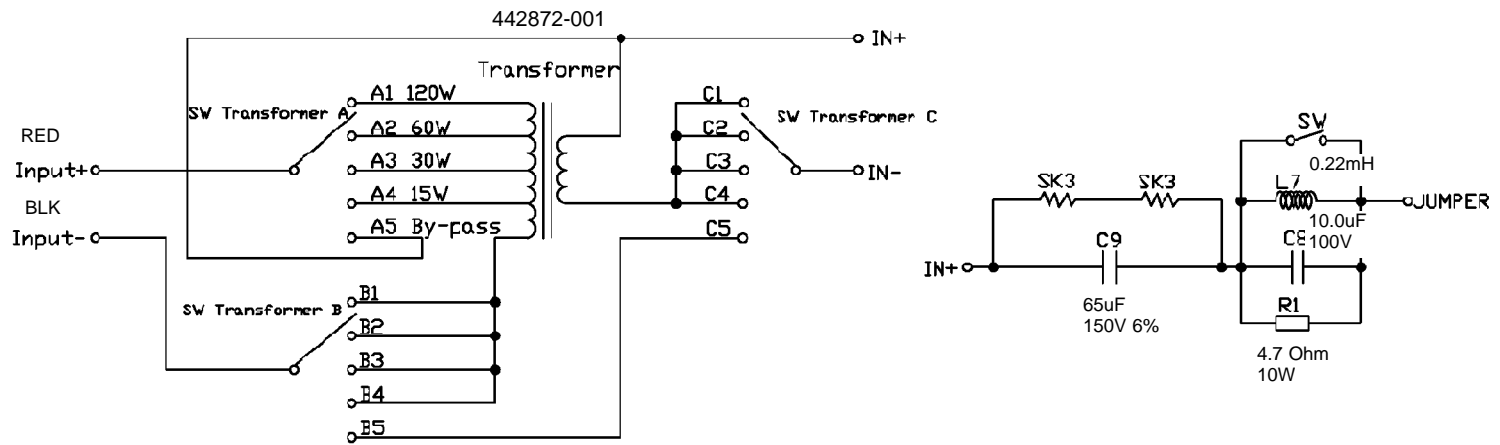
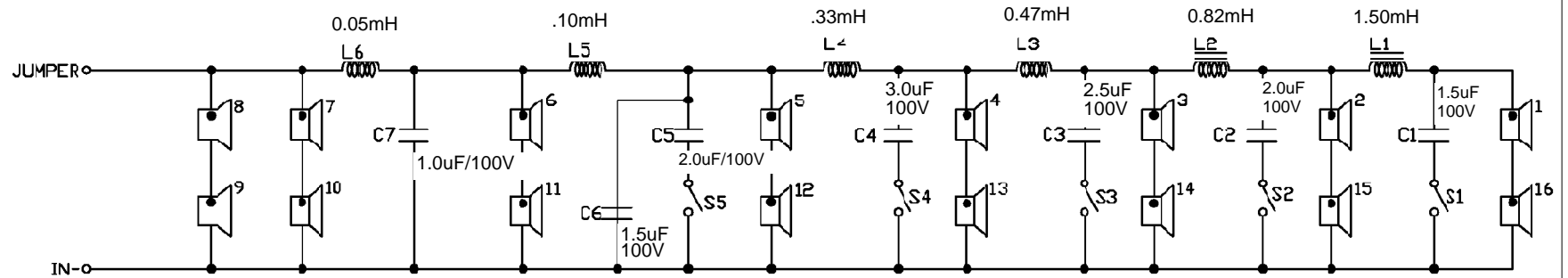
PACKAGE



JBL CBT 100LAWH REV B

JBL CBT 100/LA/WH

SCHEMATIC (442869-001)

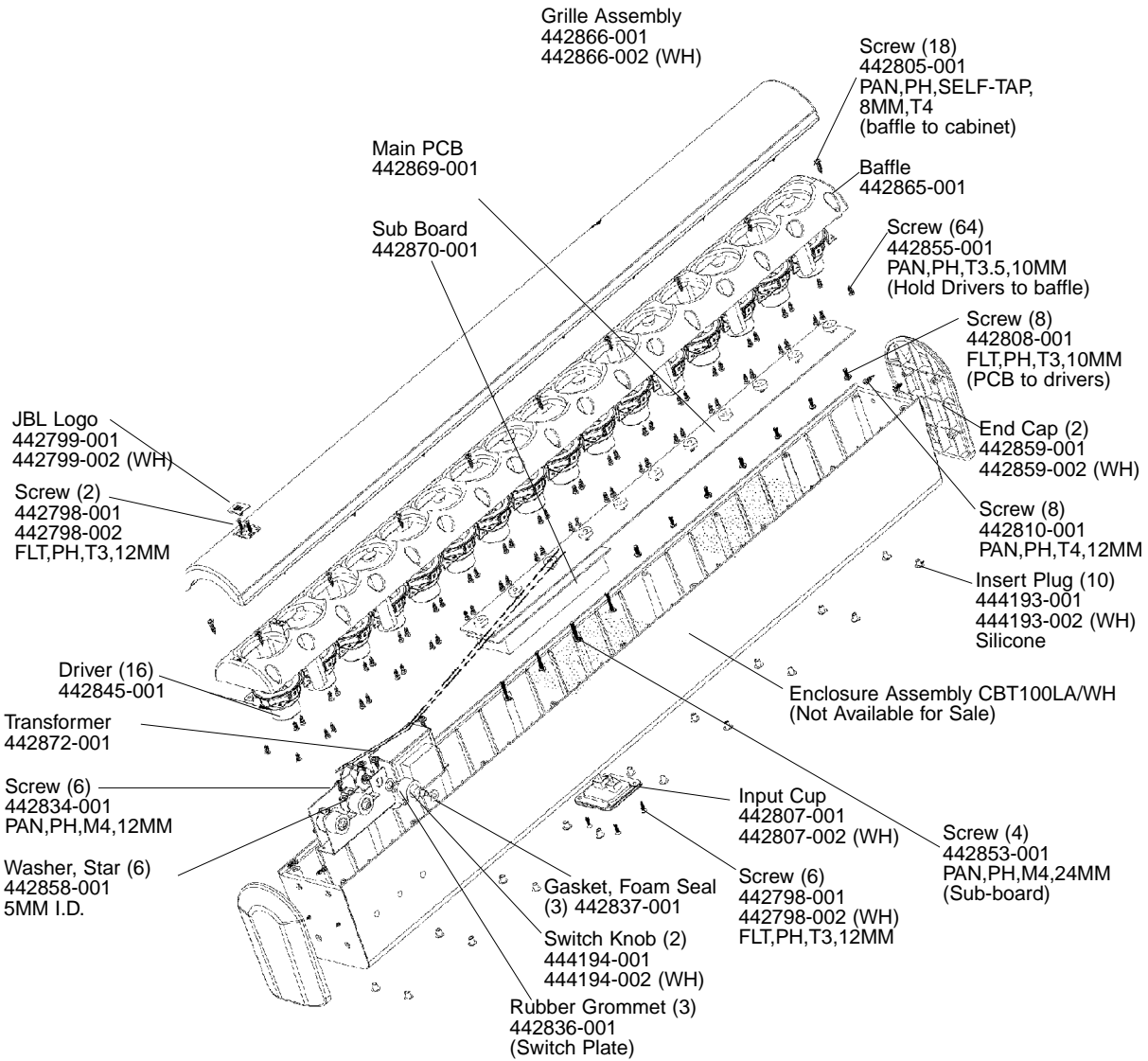


Individual Parts for the above crossover are not available.
A complete replacement assembly should be ordered.

JBL CBT 100LA/WH

JBL CBT 100LA/WH

COMPONENT EXPLODED VIEW



JBL CBT 100LA/WH