

# Technical Manual



# ASB6128/WH

## SPECIFICATIONS

### ACOUSTIC & ELECTRICAL SPECIFICATIONS:

- Nominal Impedance: 4 Ohms in Parallel-Drive Mode  
2 x 8 ohms in Discrete Drive Mode
- Power Capacity (AES): 2400W (9600W Peak), 2 Hrs  
1600W (6400W), 100 Hrs
- Frequency Range: 28Hz – 1 kHz (-10dB)
- Sensitivity: 30 Hz – 100 Hz, 102dB  
(1 watt @ 1 meter)  
100 Hz – 500 Hz, 102dB  
(1 watt @ 1 meter)

### SYSTEM COMPONENTS:

- Cabinet: Enclosure (Not For Sale)
- Grille: 338163-003, 338163-103 (WH)
- Low Frequency Transducer: 2 2242HPL, 460mm (18 in.) SVG™ Drivers With 100mm (4 in.) Voice Coil )
- DC Resistance: 4.7 ohm ±10% Aluminum Wire
- Terminal Cup: 339336-001

### AURAL SWEEP TEST SPECIFICATIONS:

- A. System Aural Sweep Test: 10.0V Input, 20 Hz to 1.2 kHz
- B. L.F. Aural Sweep Test: 10.0V Input, 20 Hz to 1.2 kHz

### PHYSICAL SPECIFICATIONS:

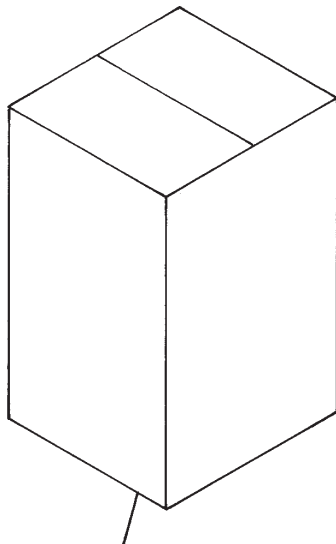
- Enclosure Dimensions: 1094 x 561 x 816 mm D  
(43.1 x 22.1 x 32.2 in.D.)
- Net Weight: 161 lb (73.0 kg.)

### WARRANTY INFORMATION:

- Refer to Warranty Statement packed with each product.

## PACKAGE

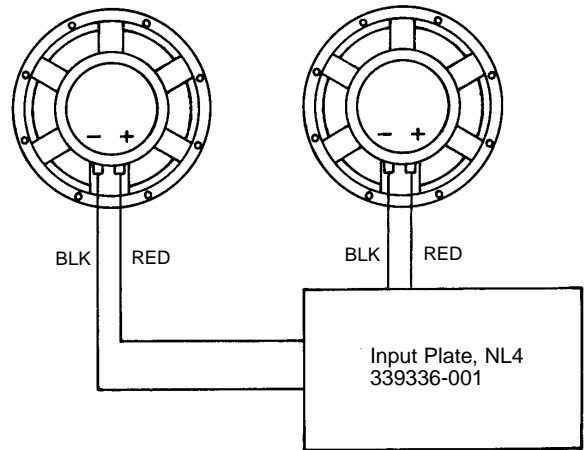
Warranty 59660  
Installation Sheet  
339390-022



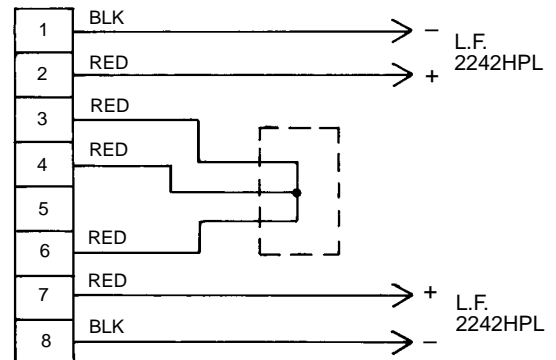
- Carton 339365-001
- Filler (2) 339366-001
- Micro Foam (8) 49790P
- Logo Sticker, Grille Assy (Large) AE 339399-001
- Sticker, JBL 337638-001
- Hardware Kit 229-00009-01
- ACC, Not Included

## WIRING DIAGRAM

Driver, Low Freq (2)  
2242HPL  
Cone Repl  
C8R2242



### SCHEMATIC DIAGRAM



# ASB6128/WH

## COMPONENT EXPLODED VIEW

Enclosure Assembly AS6128/WH  
(Not Available for Sale)

Screw (12)  
352051-001 ( )  
352051-002 (WH)  
M10 x 25MM  
SCKT,HEX,BLK,ZINC

Input Plate, NL4, AE  
339336-001  
Input Plate Label, NL4, AE  
339338-001  
Model Label, ASB6128  
339339-018

T-Nut (16)  
61861  
10-32

Driver, Low Freq  
2242HPL  
Cone Repl  
C8R2242  
Gasket (8)  
339431-001

Input Terminal  
362-10007-01

Tinsel Leads (2)  
362230-001

Dome  
71133-01

LF Wire Assy  
(Double)  
339423-001

Standoff (4)  
68639-04

Screw (6)  
882-41110-10  
6 X 5/8  
PAN PH PB  
BLK ZINC

Screw (4)  
Grille Standoff  
862-31210-24  
862-31260-24 WH  
6-20 x 1 1/2  
TR,PH,AB,BLK  
ZINC,LCS

Screw (1)  
882-51110-12  
6 x 3/4  
OV PH

Logo, Grille Assy  
(Large), AE  
339400-001

Push Nut  
350689-001  
7/16"

Grille Assembly  
338163-003  
338163-103 (WH)

Compression Spring  
350690-001

Washer  
76168  
.175 ID, .75 OD

### ELECTRICAL SCHEMATIC

