

# Technical Manual



# JBL ASB6118-WH

## SPECIFICATIONS

### ACOUSTIC & ELECTRICAL SPECIFICATIONS:

- Nominal Impedance: 8 Ohms
- Power Capacity (AES): 1200W (4800W Peak), 2 Hrs
- Long Term: 800W (3200W Peak), 100 Hrs
- Frequency Range: 28Hz – 1 kHz (-10dB)
- Sensitivity: 30 Hz – 100 Hz, 98dB  
(1 watt @ 1 meter)  
100 Hz – 500 Hz, 98dB

### SYSTEM COMPONENTS:

- Cabinet: Enclosure (Not For Sale)
- Grille: 338163-009, 338163-109 (WH)
- Low Frequency Transducer: 2242HPL, 460mm (18 in.) SVC™ Drivers With 100mm (4 in.) Voice Coil
- DC Resistance: 4.7 ohm ±10% Aluminum Wire
- Terminal Cup: 339336-001

### AURAL SWEEP TEST SPECIFICATIONS:

- A. System Aural Sweep Test: 10.0V Input, 20 Hz to 1.2 kHz
- B. L.F. Aural Sweep Test: 10.0V Input, 20 Hz to 1.2 kHz

### PHYSICAL SPECIFICATIONS:

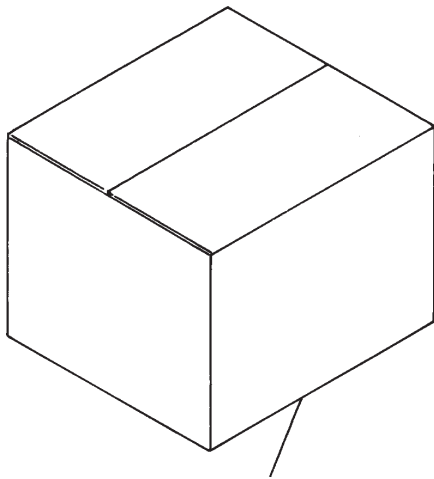
- Enclosure Dimensions: 548 x 561 x 816 mm D  
(21.6 x 22.1 x 32.2 in.D.)
- Net Weight: 98 lb (44.5 kg.)

### WARRANTY INFORMATION:

- Refer to Warranty Statement packed with each product.

## PACKAGE

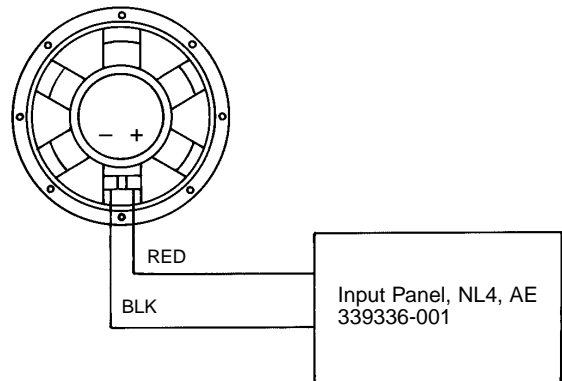
Warranty 59660  
Installation Data Sheet  
339390-023



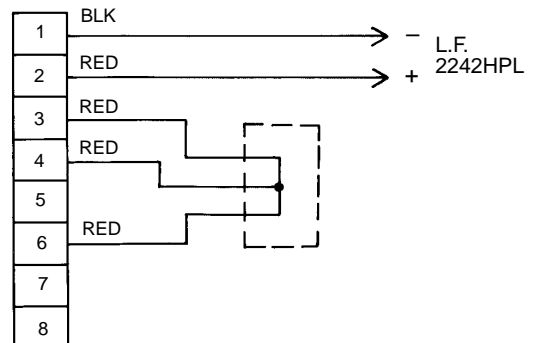
- Carton 339368-001
- Filler (2) 339369-001
- Micro Foam (8) 49790P
- Logo, Grille Assy (Large) 339399-001
- Sticker, JBL 337638-001
- Hardware Kit, SP/VS 229-00009-01
- ACC, Not Included

## WIRING DIAGRAM

Driver, Low Freq  
2242HPL  
Cone Repl  
C8R2242



### SCHEMATIC DIAGRAM



# JBL ASB6118-WH

## COMPONENT EXPLODED VIEW

Input Plate, NL4, AE  
339336-001  
Input Plate Label, NL4, AE  
339338-002  
Model Label, ASB8118  
339339-020

Screw (12)  
352051-001  
352051-002 (WH)  
M10 x 25MM  
SCKT HEX BLK ZINC

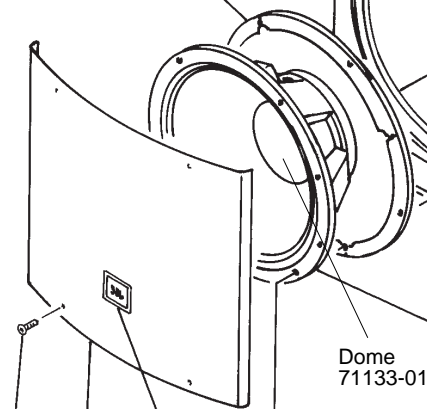
Enclosure Assembly ASB6119-WH  
(Not Available for Sale)

T-Nut (8)  
61861  
10-32

Gasket (4)  
339431-001

LF Wire Assy  
(Single)  
339422-001

Screw (6)  
882-41110-10  
6 x 5/8, PAN, PH,  
PB, BLK



Dome  
71133-01

Driver, Low Freq  
2242HPL  
Cone Repl  
C8R2242

Input Terminals  
362-10007-01

Screw (8)  
804-01110-16  
10-32 x 1  
FIL PH BLK ZINC

Tinsel Leads (2)  
352828-001

Grille Assembly  
338163-009  
338163-109 (WH)

Screw (8)  
882-51110-12  
6 x 3/4  
OV PH

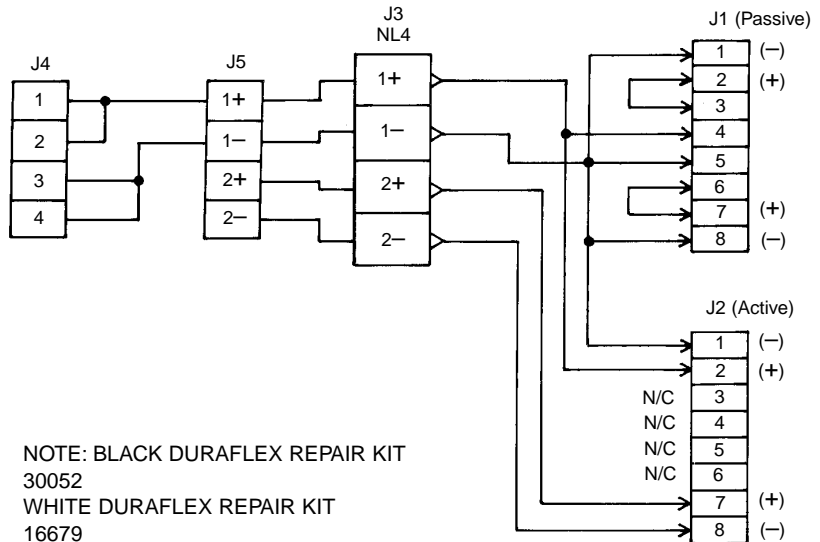
Logo, Grille Assy  
(Large), AE  
339400-001

Push Nut  
350689-001  
7/16"

Compression Spring  
350690-001

Washer  
76168  
.175 ID, .75 OD

### ELECTRICAL SCHEMATIC



NOTE: BLACK DURAFLEX REPAIR KIT  
30052  
WHITE DURAFLEX REPAIR KIT  
16679